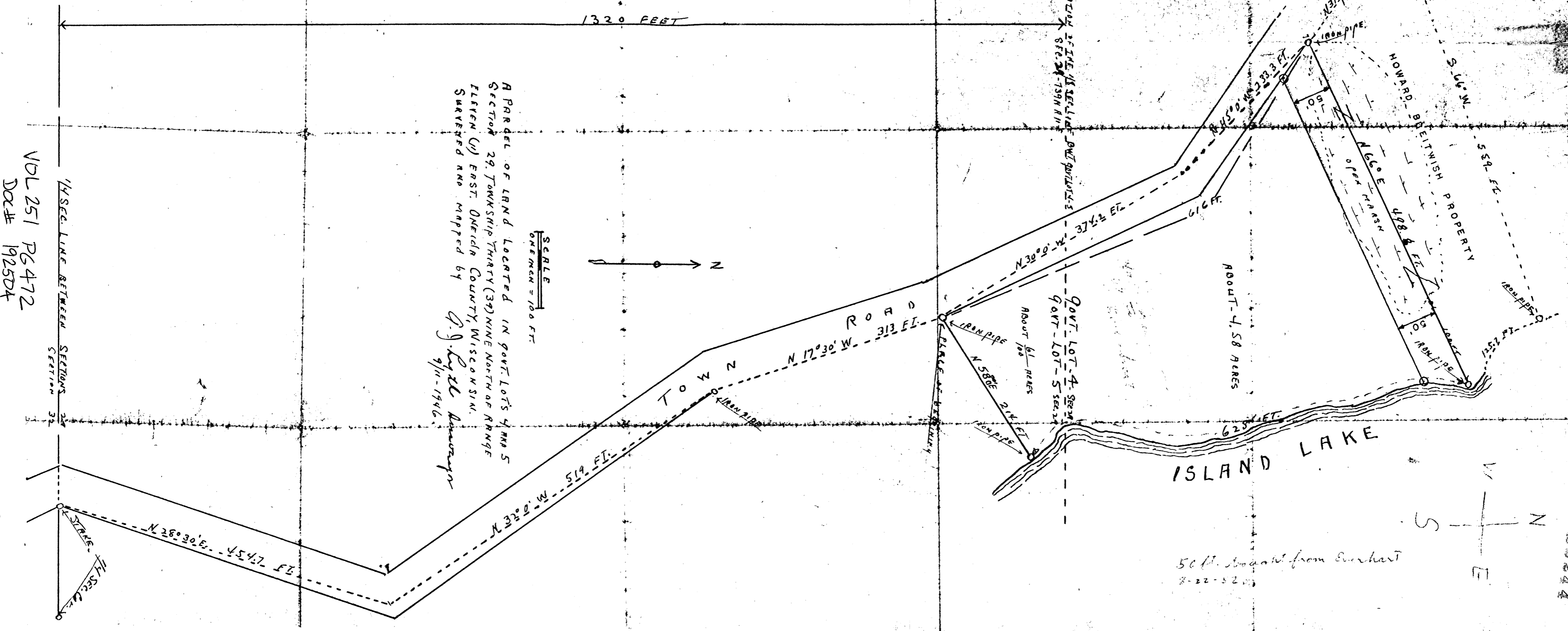


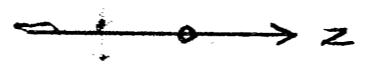
MAP # A2244  
 DATE FILED 04/13/2009  
 BY JAB  
 DESCRIPTION FILED  
 ONEIDA CO. SURVEYOR'S OFFICE

A2244



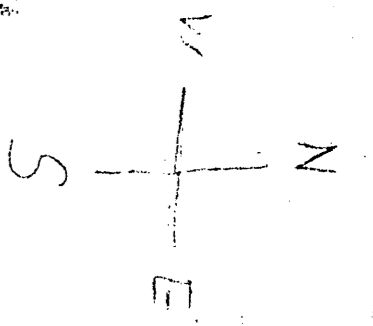
A PARCEL OF LAND LOCATED IN GOVT LOTS 4 AND 5  
 SECTION 29, TOWNSHIP THIRTY (39) NINE NORTH OF RANGE  
 ELEVEN (11) EAST, ONEIDA COUNTY, WISCONSIN.  
 SURVEYED AND MAPPED BY  
*A. J. Rydz*  
 9/11-1946

SCALE  
 ONE INCH = 100 FT.



1/4 SEC. LINE BETWEEN SECTIONS 29 & 30  
 VOL 251 PG 472  
 DOC# 192504

50 FT. from Burhart  
 8-22-52



A2244