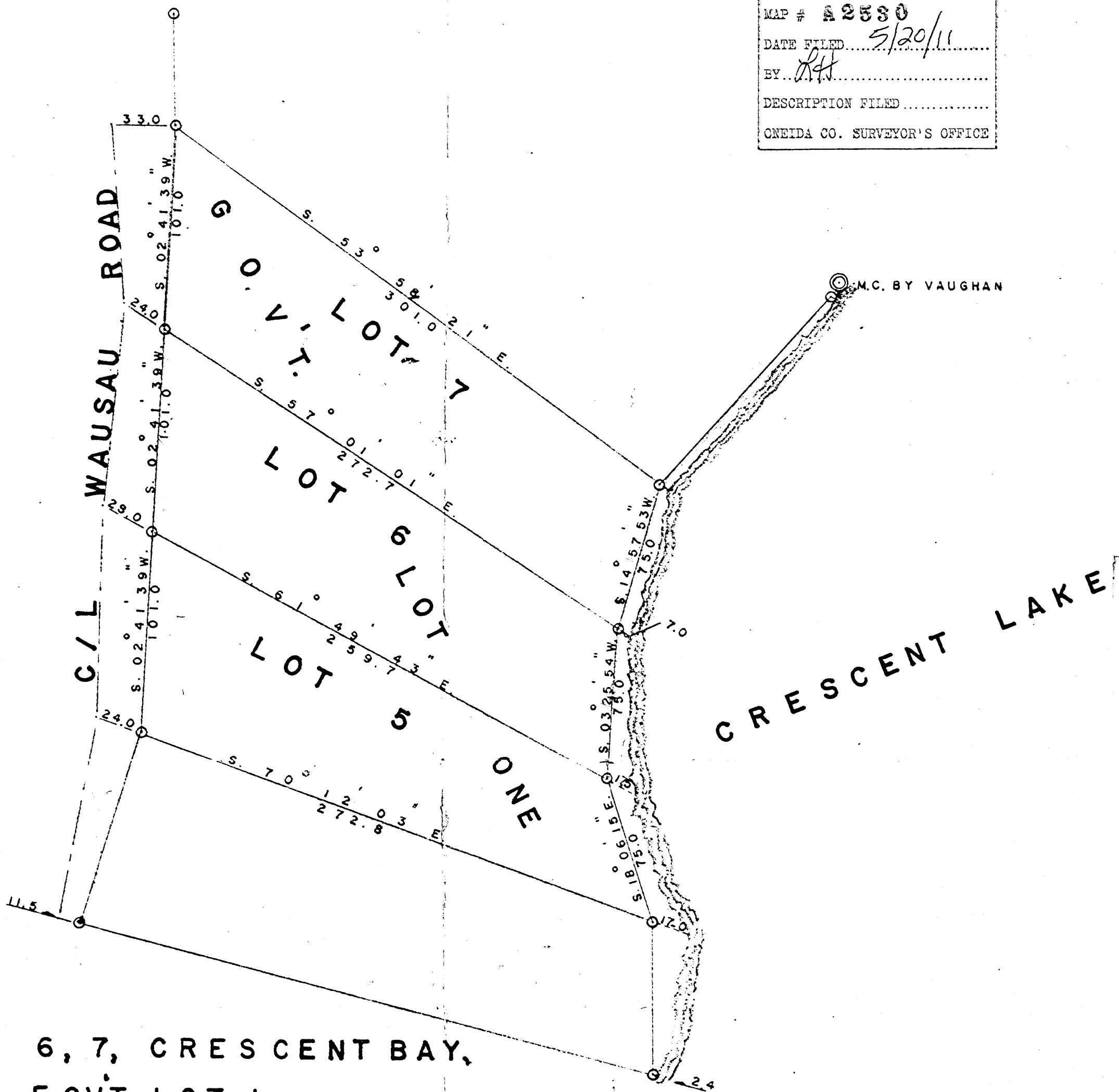


A 2530

MAP #	A 2530
DATE FILED	5/20/11
BY	RH
DESCRIPTION FILED	
ONEIDA CO. SURVEYOR'S OFFICE	

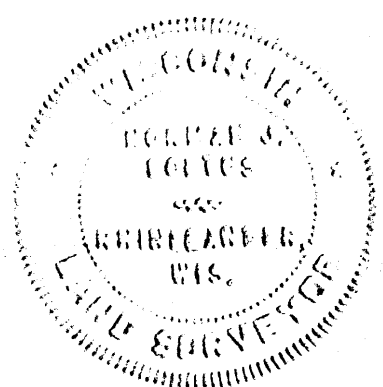


M.C. BY VAUGHAN

LOTS 5, 6, 7, CRESCENT BAY,
 PART OF GOVT. LOT 1,
 SECTION 7, T. 36 N.
 R. 8 E. ONEIDA COUNTY, WIS.

SURVEY FOR MRS. JOHN C. EGENHOEFER
 SCALE 1" = 50'
 6. 13. 69
 N. LOFTUS G. DRIVAS

A 2530



A 2530