

A2562

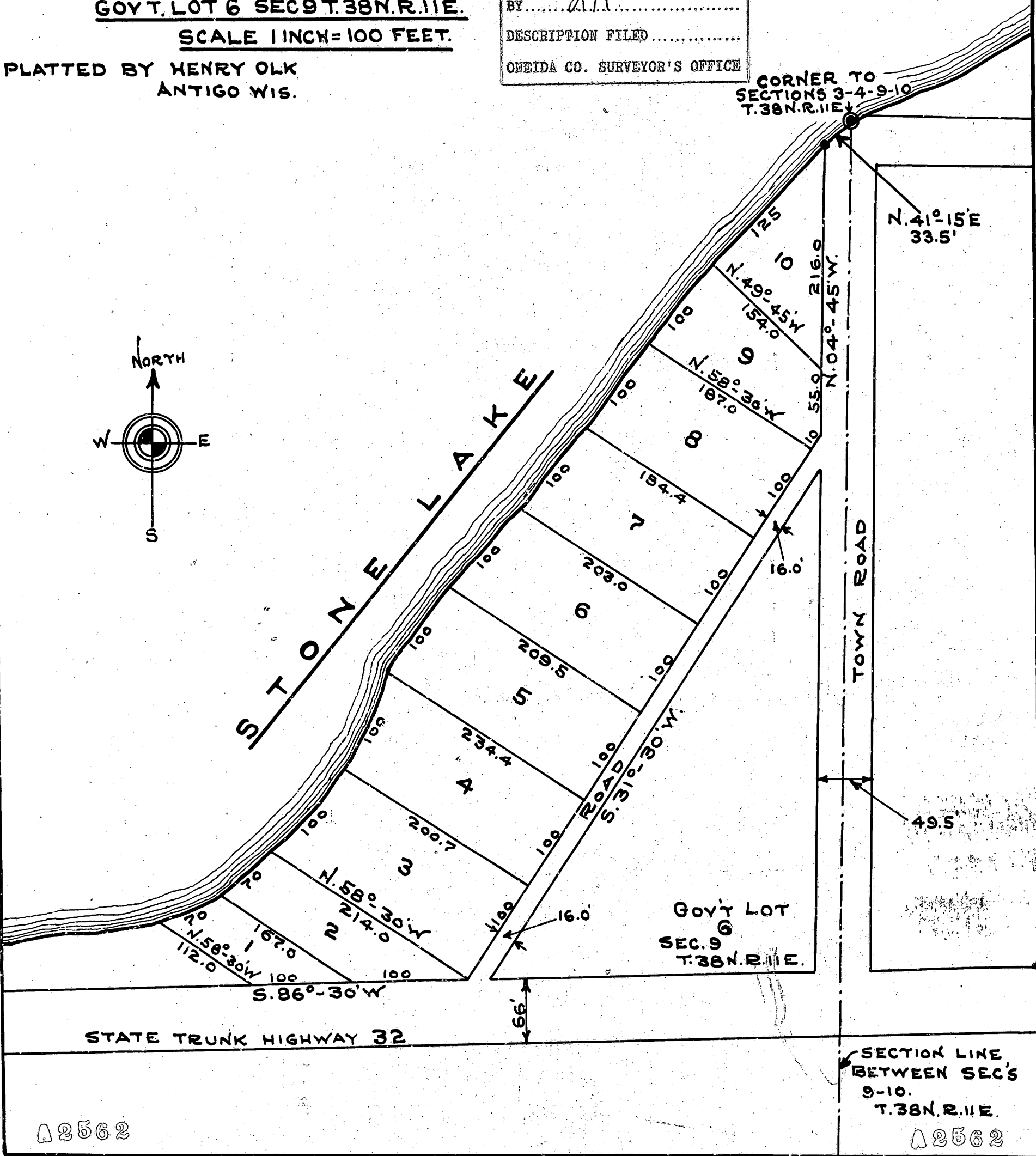
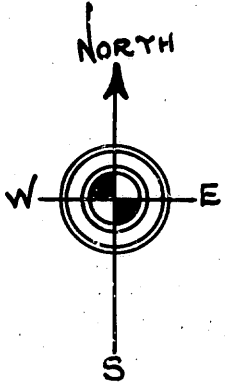
TRIANGLE BEACH

GOV'T. LOT 6 SEC 9 T.38N.R.11E.

SCALE 1 INCH = 100 FEET.

PLATTED BY HENRY OLK
ANTIGO WIS.

MAP # A2562
 DATE FILED 9/15/11
 BY J.H.
 DESCRIPTION FILED
 ONEIDA CO. SURVEYOR'S OFFICE



A2562

SECTION LINE
BETWEEN SEC'S
9-10.
T.38N.R.11E.

A2562