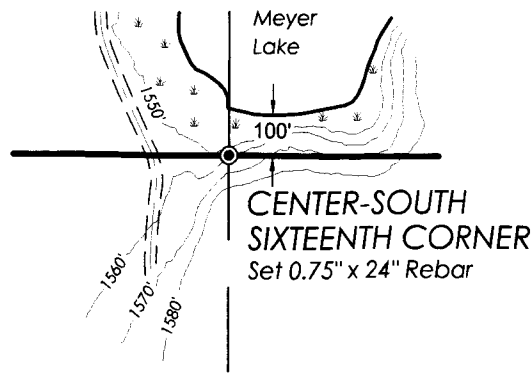


DETAIL



NORTH QUARTER CORNER
Set 2.5" Aluminum Pipe
3.25" Oneida County Cap
See USPLS Monument Record

SURVEYOR'S CERTIFICATE
I, Emily K. Pierce, Professional Land Surveyor No. S-2728 hereby certify that I have surveyed the property shown hereon; that this map represents an accurate survey of said property to the best of my knowledge and belief; that I have performed this survey by order of Jim Koskey, and that I have complied with the requirements of Wisconsin Administrative Code A-E 7.
STEIGERWALDT LAND SURVEYING, LLC

Emily K. Pierce

Professional Land Surveyor No. S-2728
Dated this August 1, 2017
Field work Completed on August 1, 2017

**The South lines of the
NE 1/4 of the SW 1/4
and
NW 1/4 of the SE 1/4**

Section 34, T39N, R5E
Town of Minocqua,
Oneida County, Wisconsin

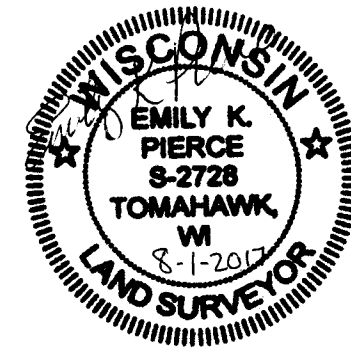
WEST QUARTER CORNER
Found 2.5" Brass
Capped Iron Post

CENTER-WEST SIXTEENTH CORNER
Computed Position

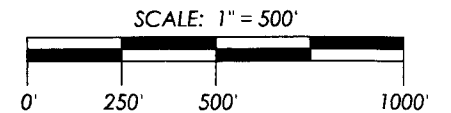
CENTER OF SECTION
Computed Position

CENTER-EAST SIXTEENTH CORNER
Computed Position

EAST QUARTER CORNER
Set 2.5" Aluminum Pipe
3.25" Oneida County Cap
See USPLS Monument Record



Bearings WisCRS - Oneida County,
referenced to the West line of the
Southwest Quarter, Section 34,
bearing N 01°25'46" E.



Monument sizes are outside diameter.
All corner monuments are as noted.

STEIGERWALDT LAND SURVEYING, LLC

856 NORTH 4TH STREET, TOMAHAWK, WI 54487
PHONE #: (715) 453-3274 FAX #: (715) 453-8325
www.steigerwaldt.com

JOB #: 5683 DWG #: 5683 Koskey Sheet 1 of 1

