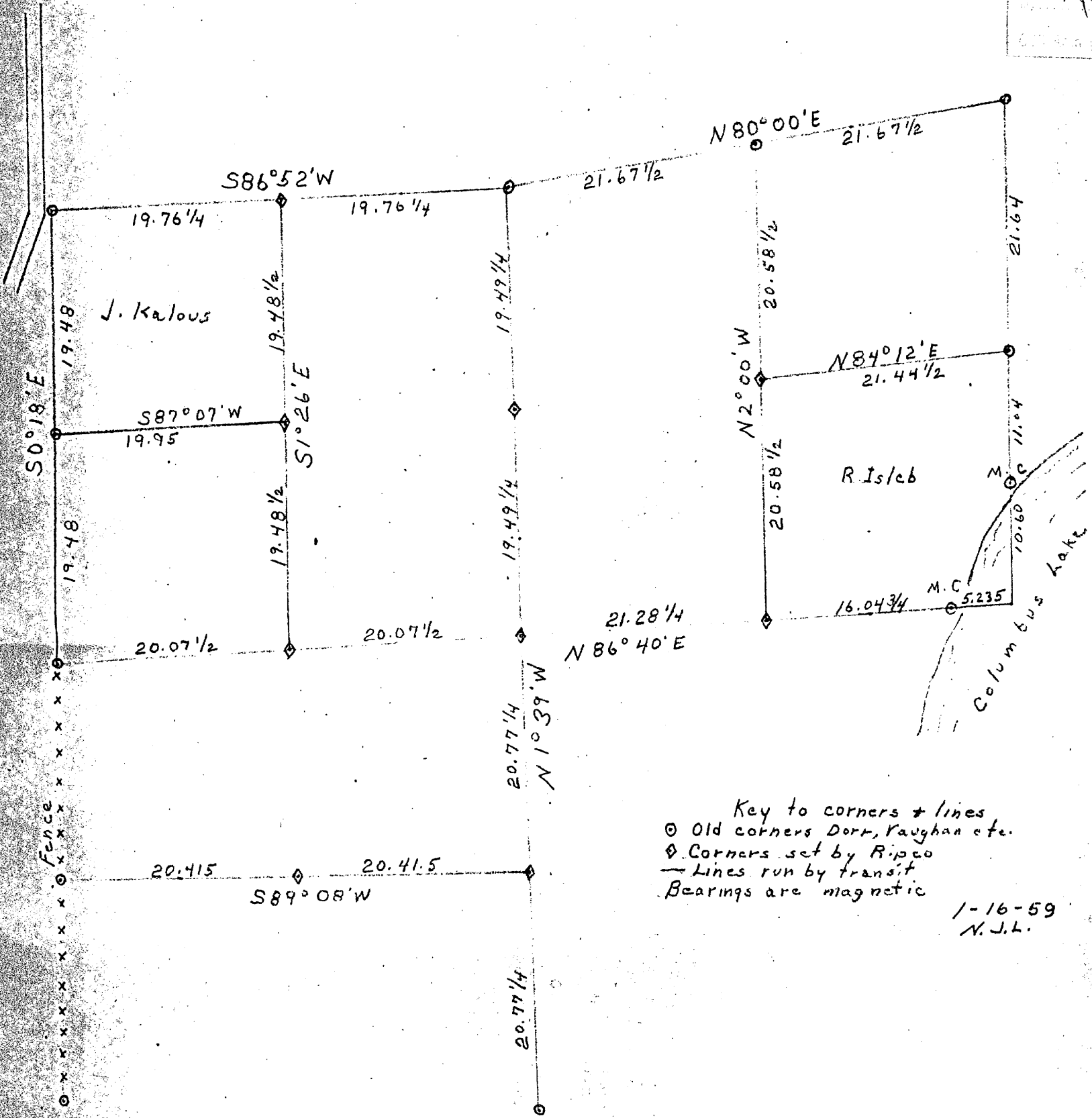


# SURVEY Sec 29 T39 N R 10 E

RECORDED & FILED # AC 19  
 In the County Surveyor's Office  
 on the 28th day of 1959  
 M.J.L.  
 Book # \_\_\_\_\_



Key to corners & lines  
 ⊙ Old corners Dorr, Vaughan etc.  
 ⊠ Corners set by Ripco  
 — Lines run by transit  
 Bearings are magnetic

1-16-59  
 M.J.L.

29 39-10

SEC 29 T39 N R 10 E