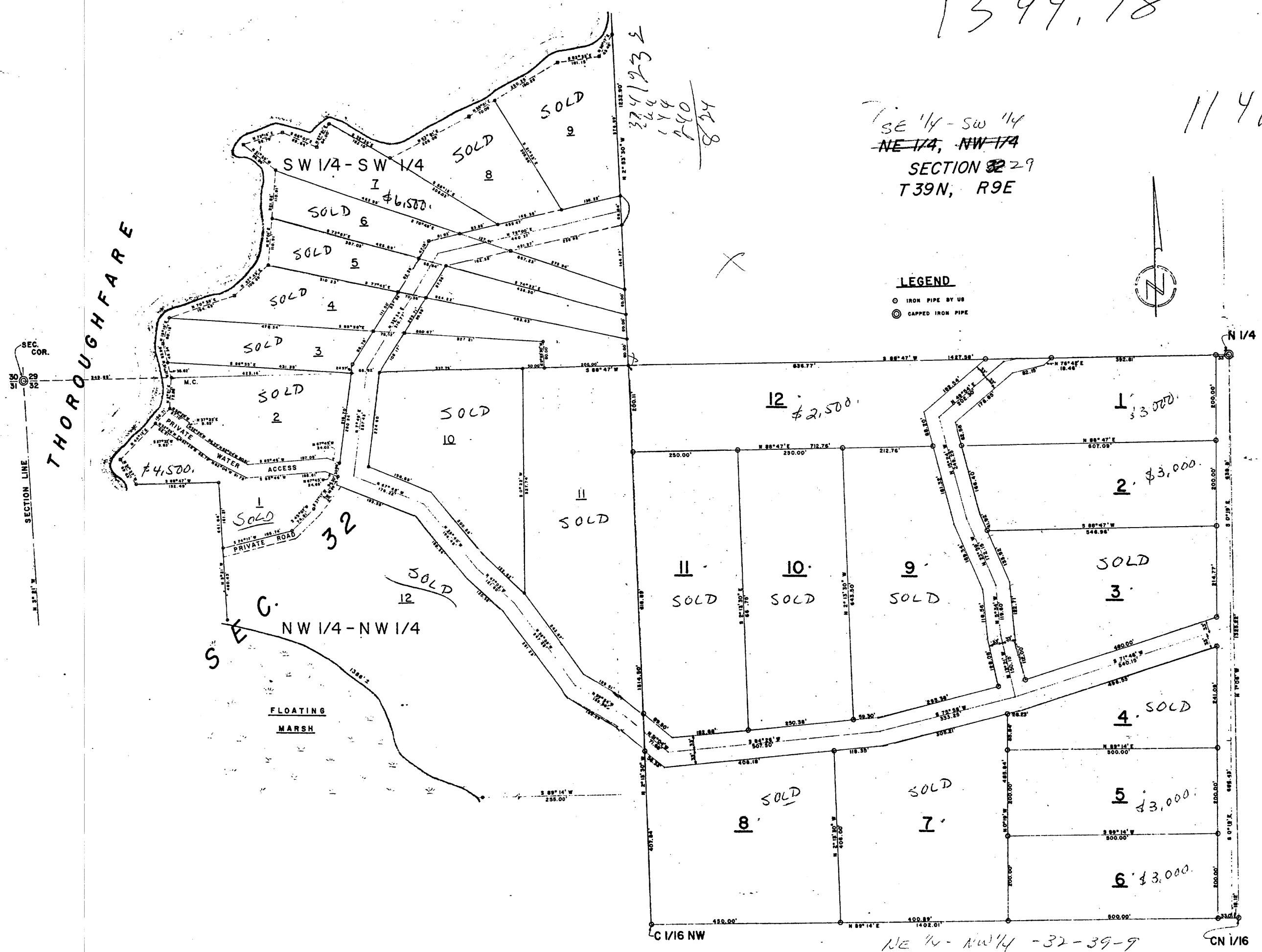


1394.78

1149'72

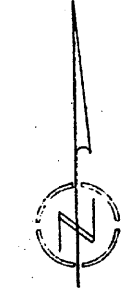
SE 1/4 - SW 1/4
NE 1/4, NW 1/4
SECTION 32-29
T39N, R9E

3741232
264
144
240
824



LEGEND

- IRON PIPE BY US
- ⊙ CAPPED IRON PIPE



RECEIVED & FILED # **A437**
 Florida County Surveyor's Office
MAY 3 1980
 Date
 by *P. H.*
 SCS Area #