

This plat duplicated in Sept. Survey Except alteration of Lot 9 To 100 ft. Lake front

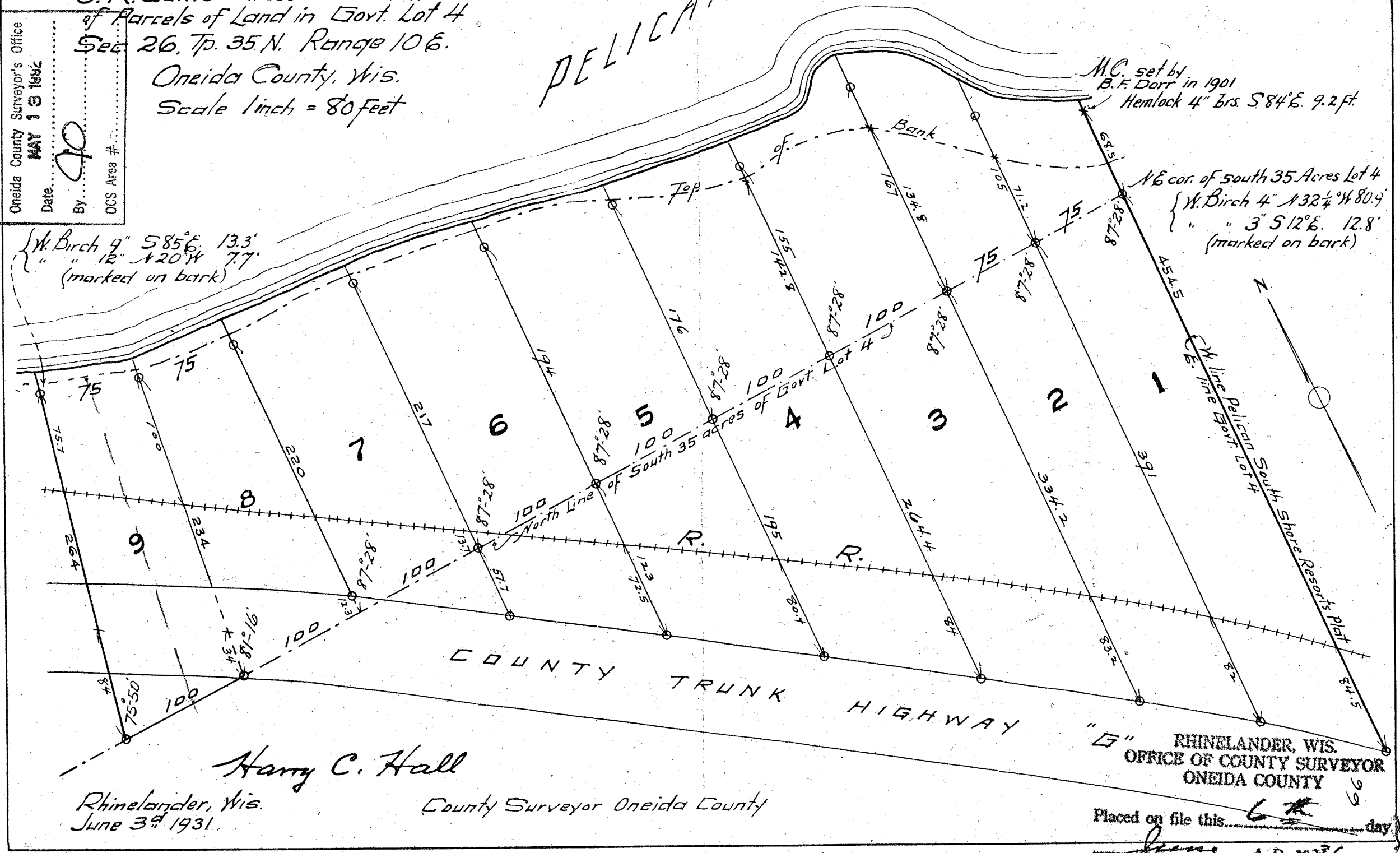
C. R. Guth's Unrecorded Plat
of Parcels of Land in Govt. Lot 4
Sec 26, Tp. 35. N. Range 10 E.
Oneida County, Wis.
Scale 1 inch = 80 feet

A617

RECEIVED & FILED #
Oneida County Surveyor's Office
Date: MAY 13 1931
By: [Signature]
OCS Area #

PELICAN LAKE

○ Indicates Iron Pipe
* " stake



{ W. Birch 9" S 85° E 13.3'
" " 12" N 20° W 7.7'
(marked on bank)

M.C. set by
B.F. Dort in 1901
Hemlock 4" brs S 84° E 9.2 ft

N.E. cor. of south 35 Acres Lot 4
{ W. Birch 4" N 32 1/4° W 80.9'
" " 3" S 12° E 12.8'
(marked on bank)

Harry C. Hall

Rhineland, Wis.
June 3rd 1931

County Surveyor Oneida County

RHINELANDER, WIS.
OFFICE OF COUNTY SURVEYOR
ONEIDA COUNTY

Placed on file this 6th day of

June A.D. 1931

Harry C. Hall
County Surveyor

386 - MS

A617

A617

A617