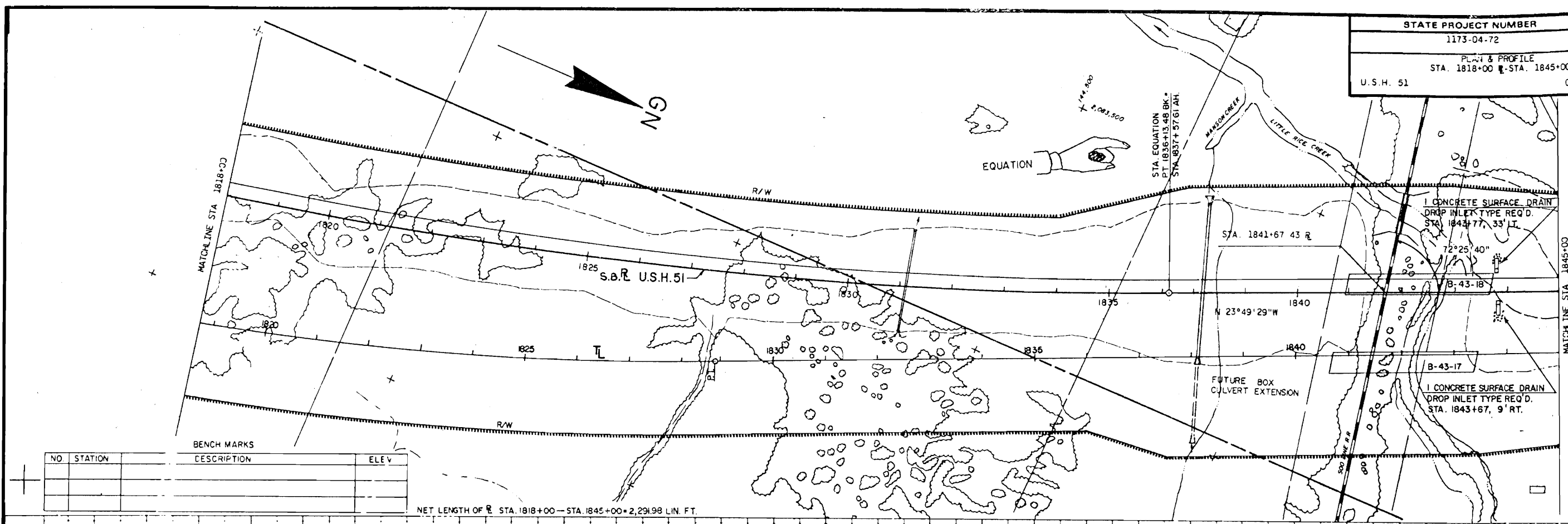


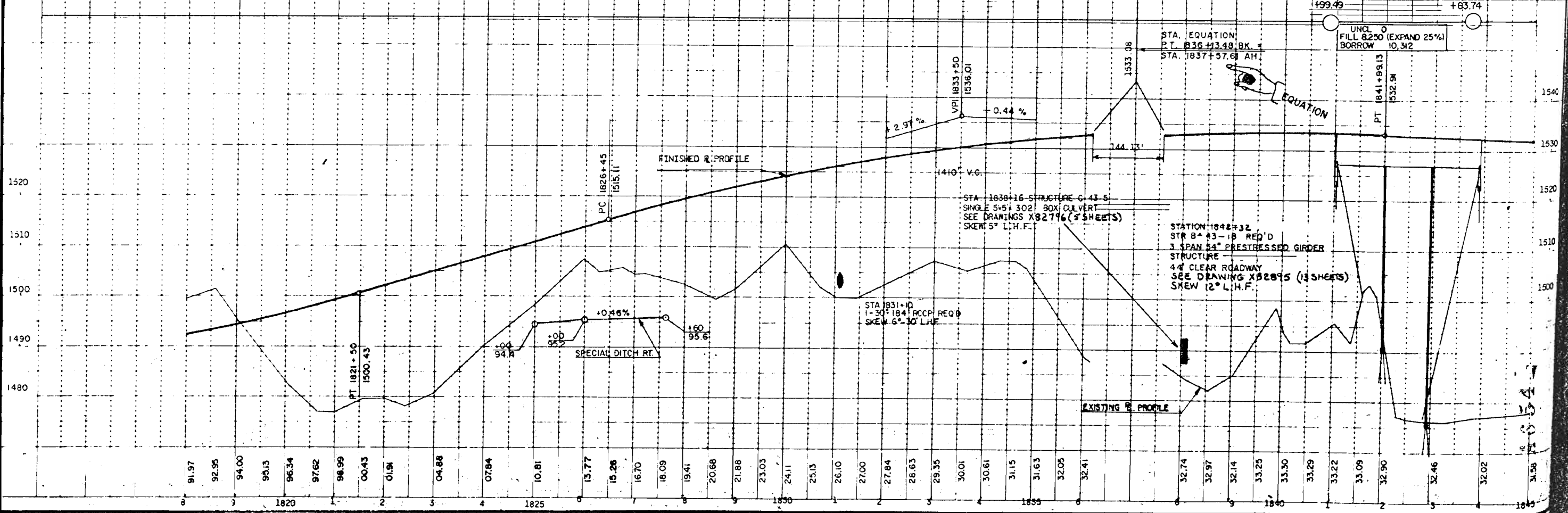


A 654



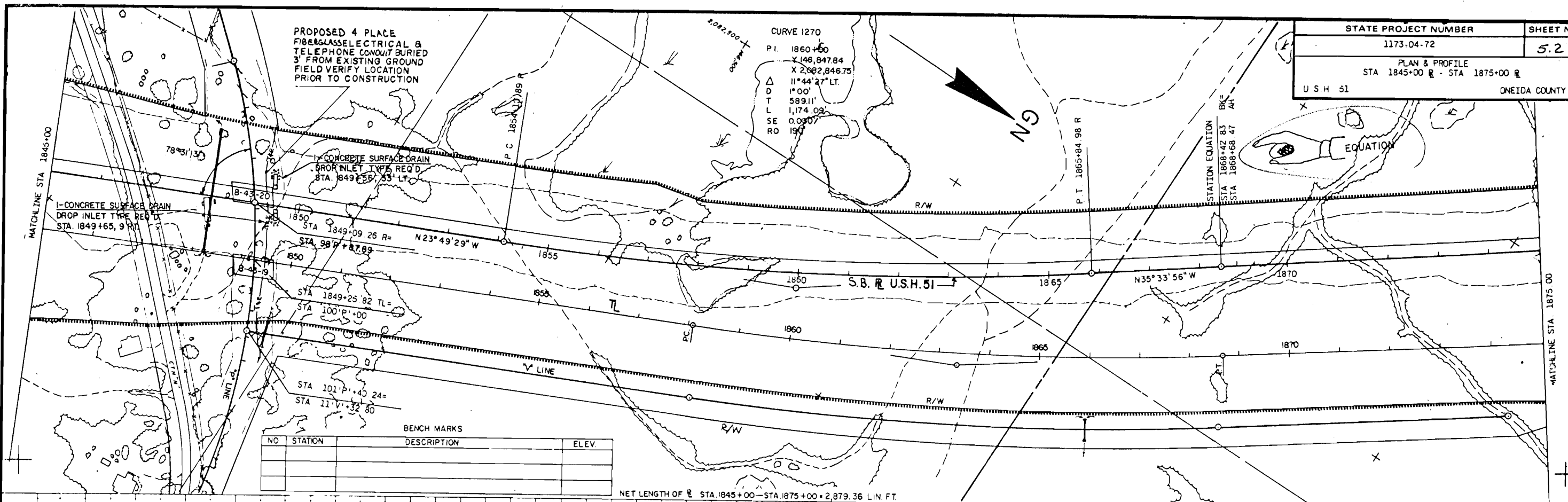
NO	STATION	DESCRIPTION	ELEV

NET LENGTH OF R STA. 1818+00 - STA. 1845+00 = 2,291.98 LIN. FT.

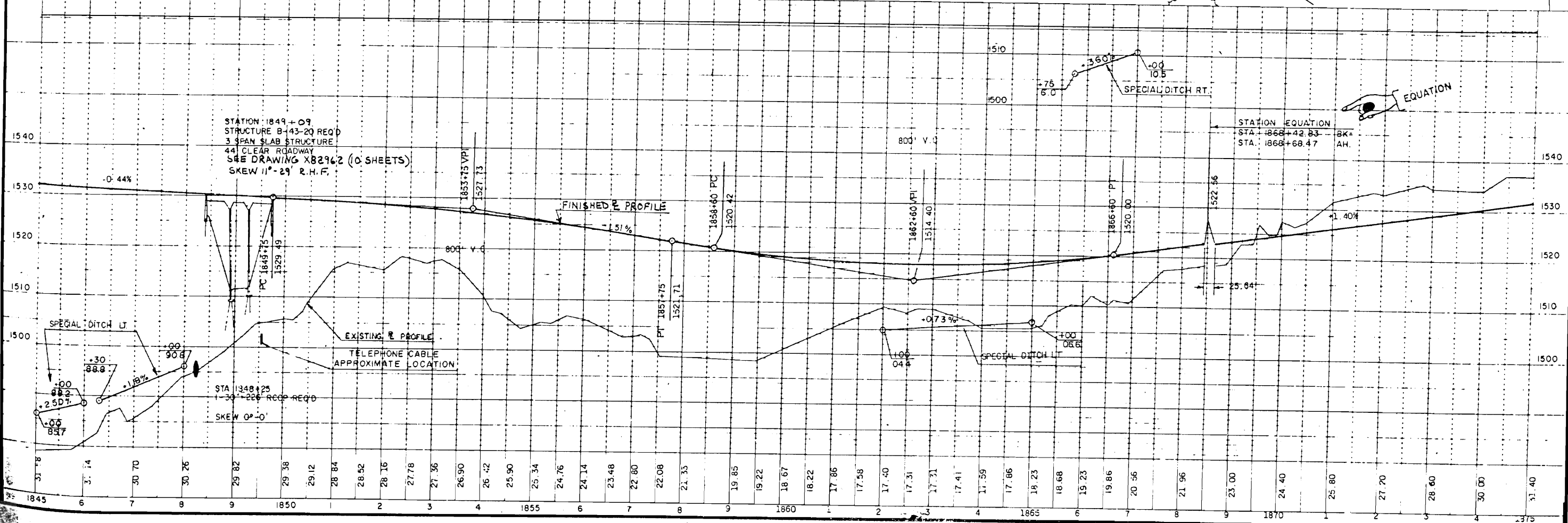


25.64

STATE PROJECT NUMBER	SHEET NO.
1173-04-72	5.2
PLAN & PROFILE STA 1845+00 R - STA 1875+00 R	
U.S. 51	ONEIDA COUNTY

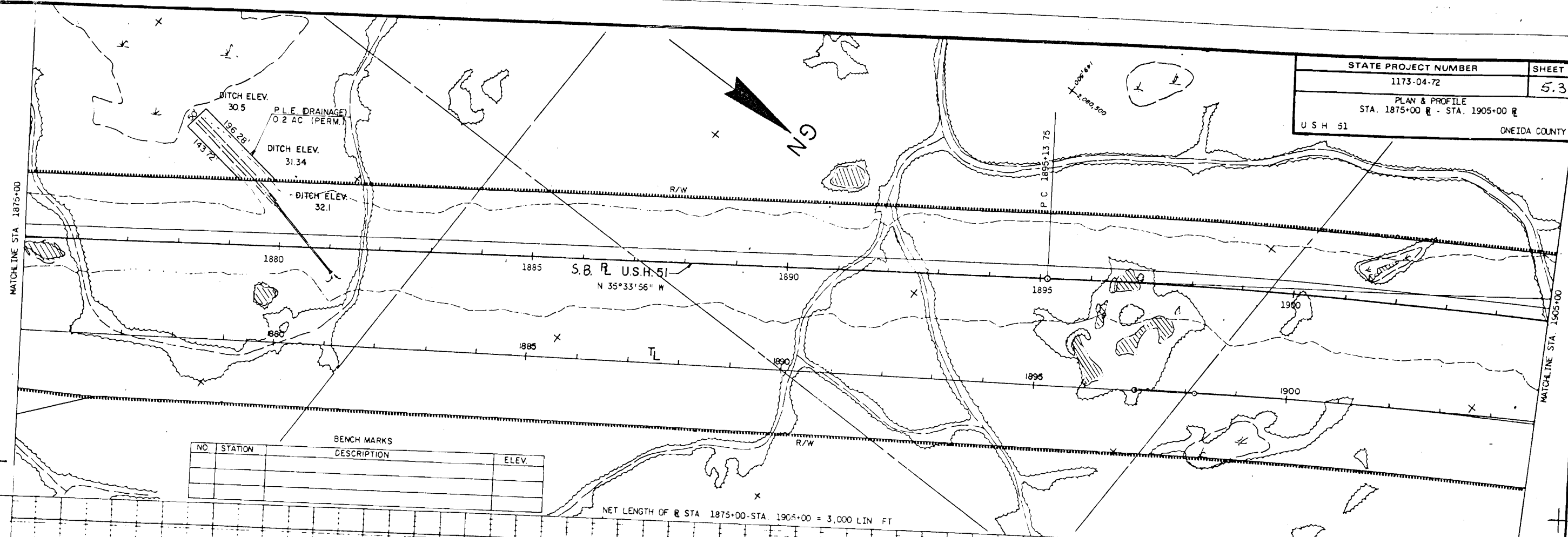


NO	STATION	DESCRIPTION	ELEV.



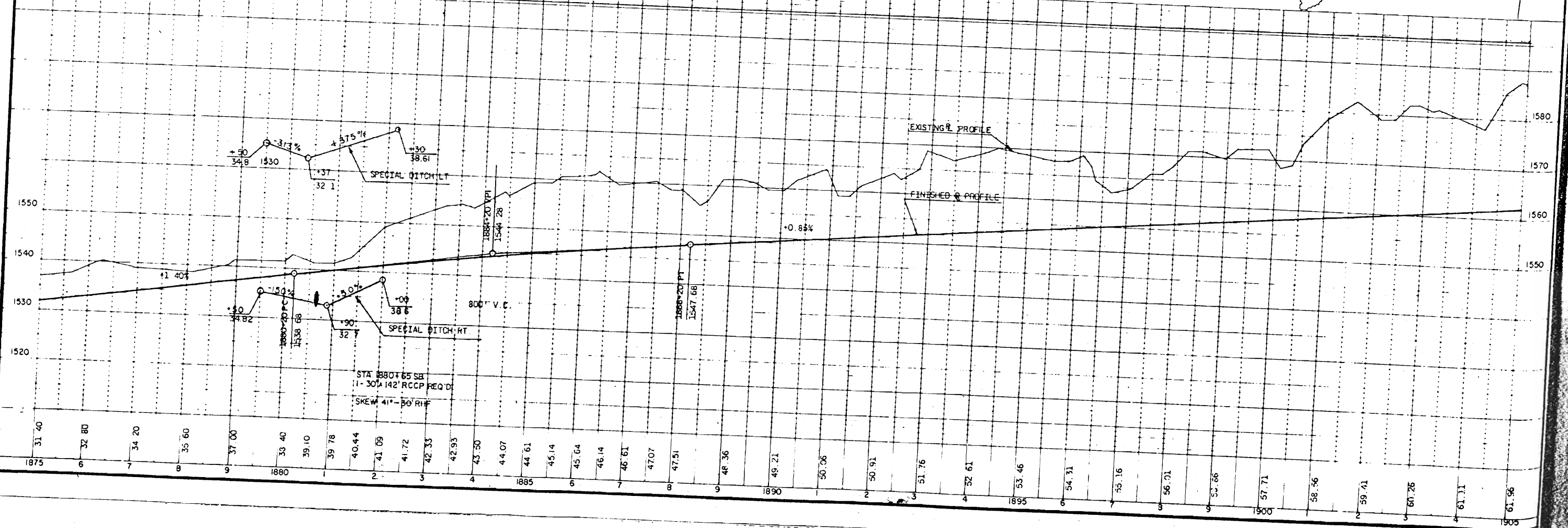
A654

A654



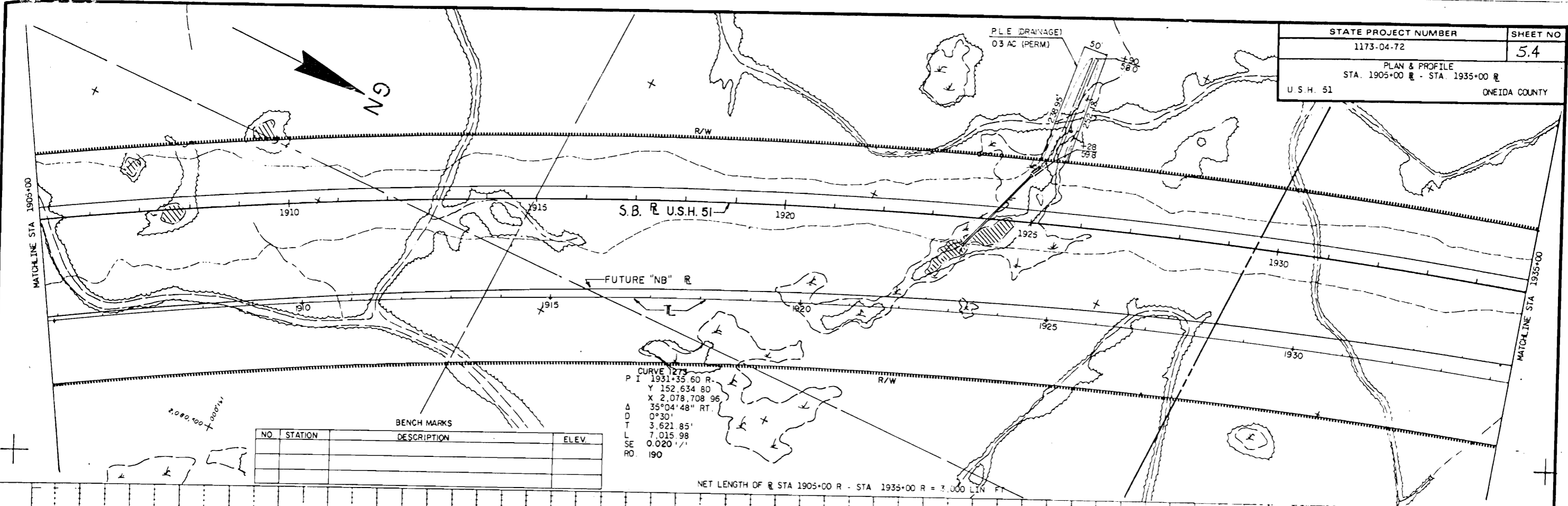
NO.	STATION	BENCH MARKS DESCRIPTION	ELEV.

NET LENGTH OF R STA 1875+00-STA 1905+00 = 3,000 LIN. FT



1875  
 1880  
 1885  
 1890  
 1895  
 1900  
 1905

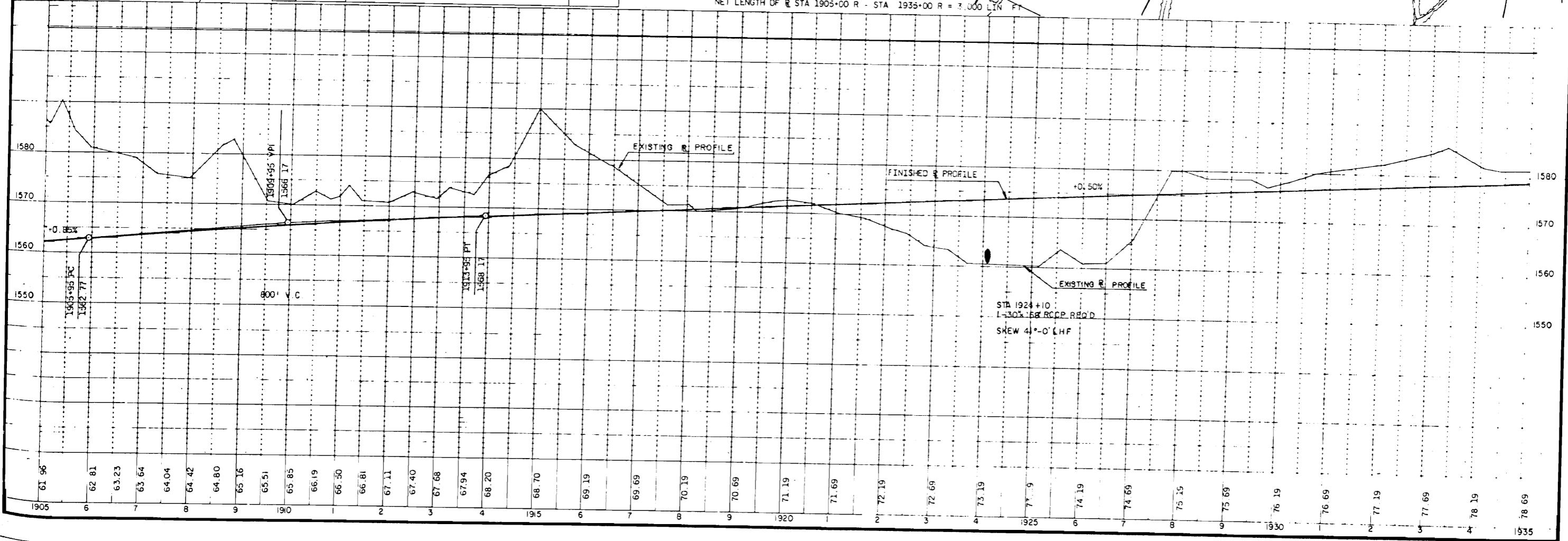
STATE PROJECT NUMBER	SHEET NO
1173-04-72	5.4
PLAN & PROFILE	
STA. 1905+00 R - STA. 1935+00 R	
U.S.H. 51	ONEIDA COUNTY



CURVE 1273  
 P I 1931+35.60 R-  
 Y 152,634.80  
 X 2,078,708.96  
 Δ 35°04'48" RT.  
 D 0°30'  
 T 3,621.85'  
 L 7,015.98  
 SE 0.020' / 1'  
 RO. 190

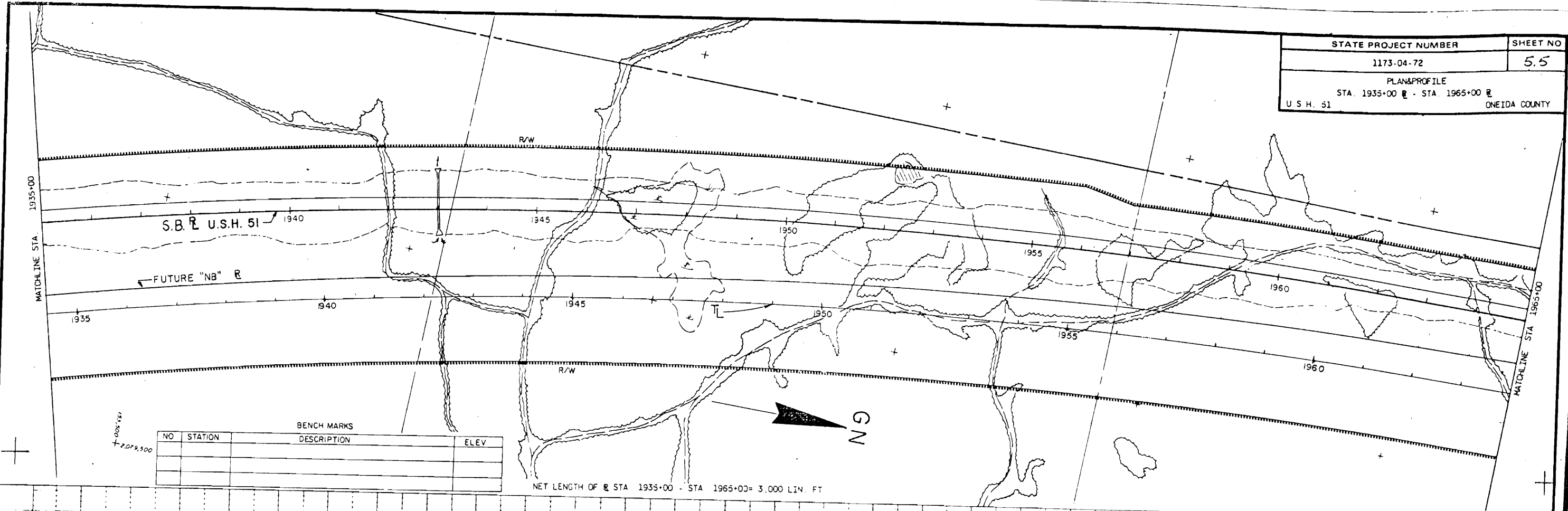
NO.	STATION	BENCH MARKS DESCRIPTION	ELEV.

NET LENGTH OF R STA 1905+00 R - STA 1935+00 R = 3,000 LIN FT

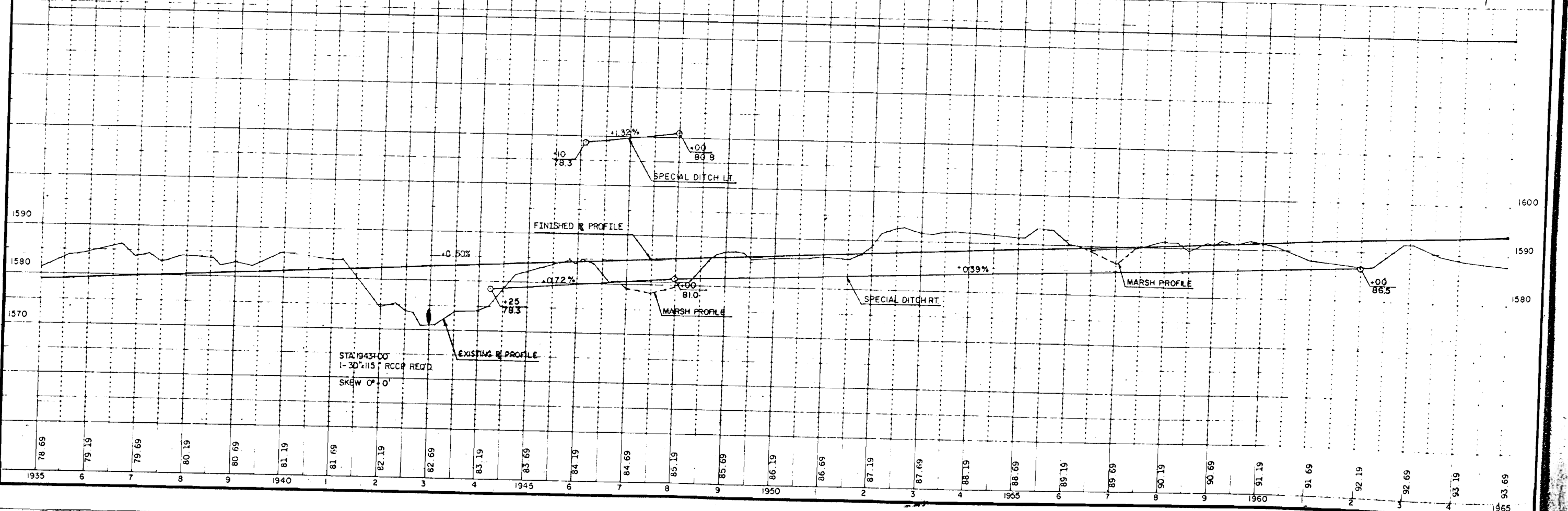


1054

STATE PROJECT NUMBER	SHEET NO
1173-04-72	5.5
PLAN & PROFILE	
STA. 1935+00 R - STA. 1965+00 R	
U.S.H. 51 ONEIDA COUNTY	



NO	STATION	BENCH MARKS DESCRIPTION	ELEV



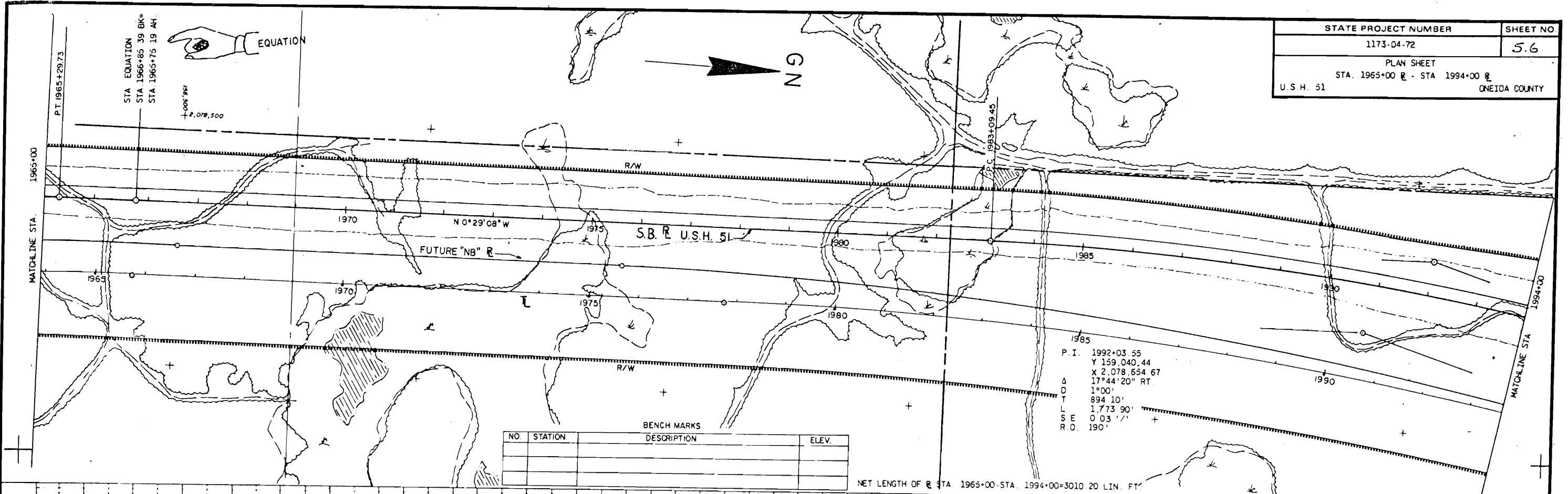
A654

ONEIDA

119.2

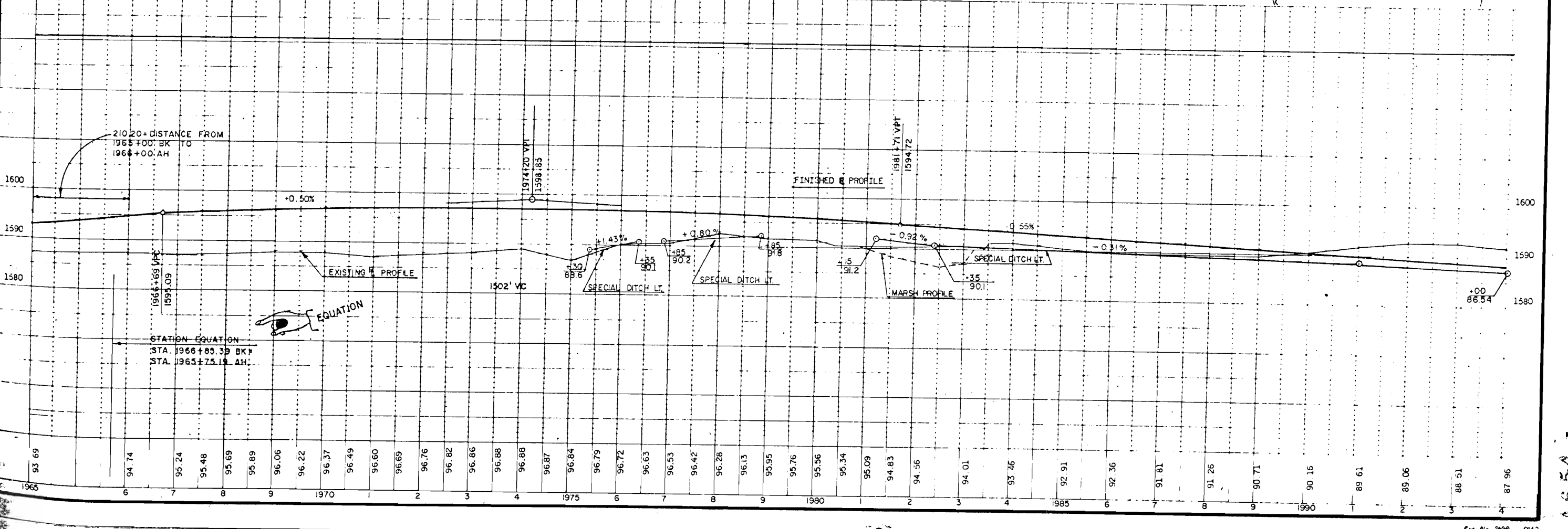
STATE PROJECT NUMBER	SHEET NO
1173-04-72	5.6
PLAN SHEET	
STA. 1965+00 R - STA 1994+00 R	
U.S.H. 51 ONEIDA COUNTY	

AG 54



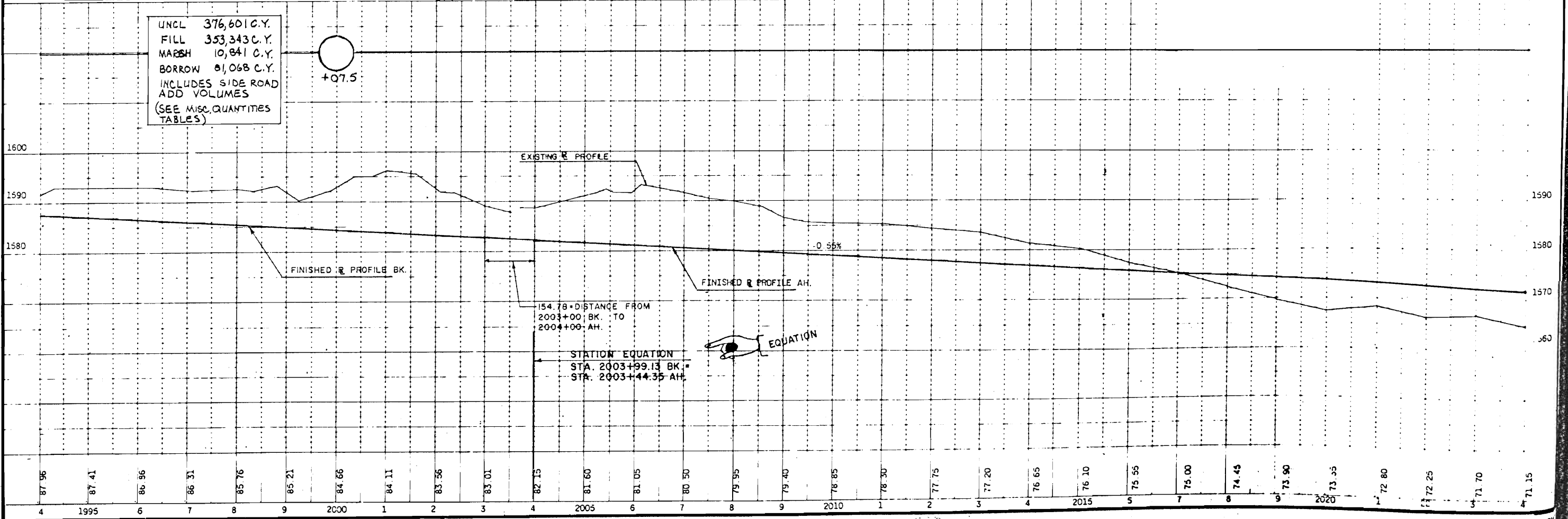
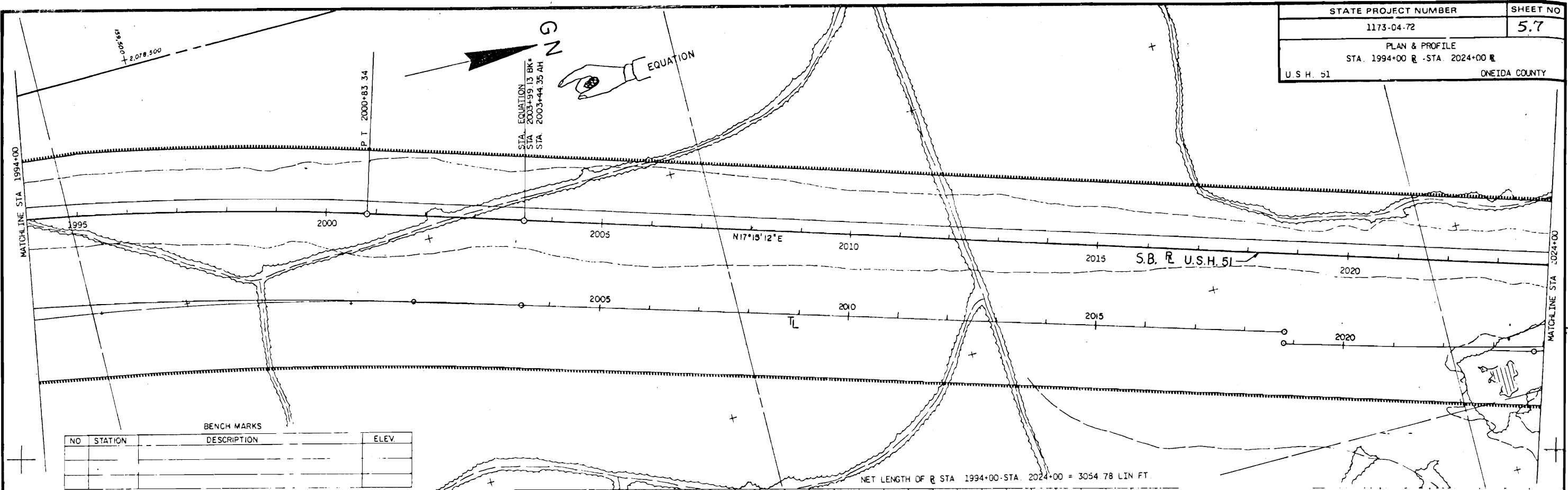
NO.	STATION	DESCRIPTION	ELEV.

NET LENGTH OF R STA 1965+00-STA 1994+00=3010.20 LIN. FT.



AG 54

STATE PROJECT NUMBER	SHEET NO
1173-04-72	5.7
PLAN & PROFILE	
STA. 1994+00 R - STA. 2024+00 R	
U.S.H. 51	ONEIDA COUNTY



A654

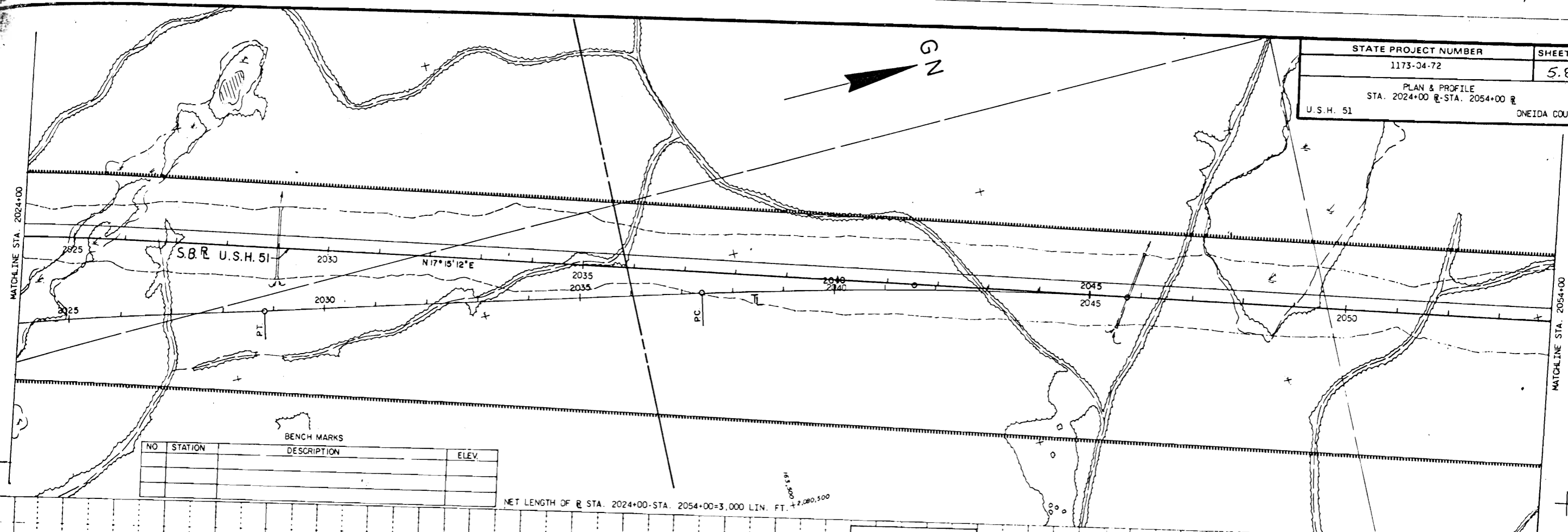
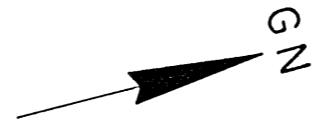
MATCHLINE STA. 2024+00

MATCHLINE STA. 1994+00



STATE PROJECT NUMBER	SHEET NO
1173-04-72	5.8
PLAN & PROFILE	
STA. 2024+00 R-STA. 2054+00 R	
U.S.H. 51	ONEIDA COUNTY

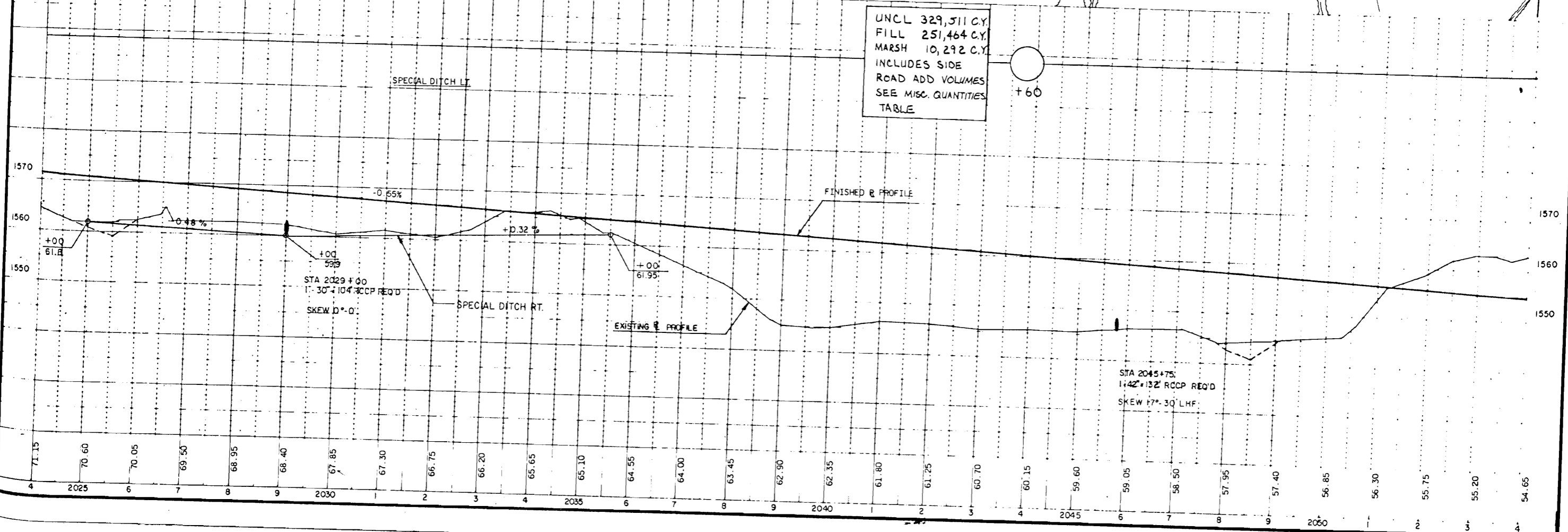
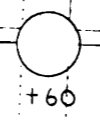
A 654



NO	STATION	DESCRIPTION	ELEV.

NET LENGTH OF R STA. 2024+00-STA. 2054+00=3,000 LIN. FT. ± 2,080,500

UNCL 329,511 C.Y.  
 FILL 251,464 C.Y.  
 MARSH 10,292 C.Y.  
 INCLUDES SIDE  
 ROAD ADD VOLUMES  
 SEE MISC. QUANTITIES  
 TABLE

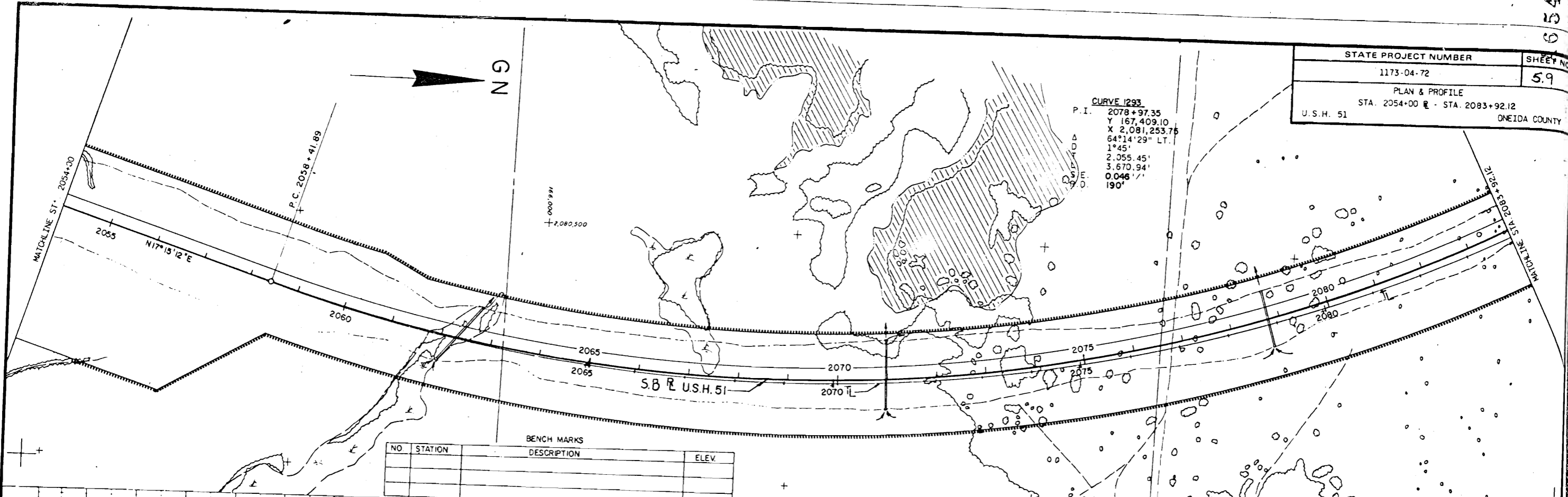


STA 2045+75:  
 1:42'±132' RCCP REQ'D  
 SKEW 17°-30' LHF

A 654

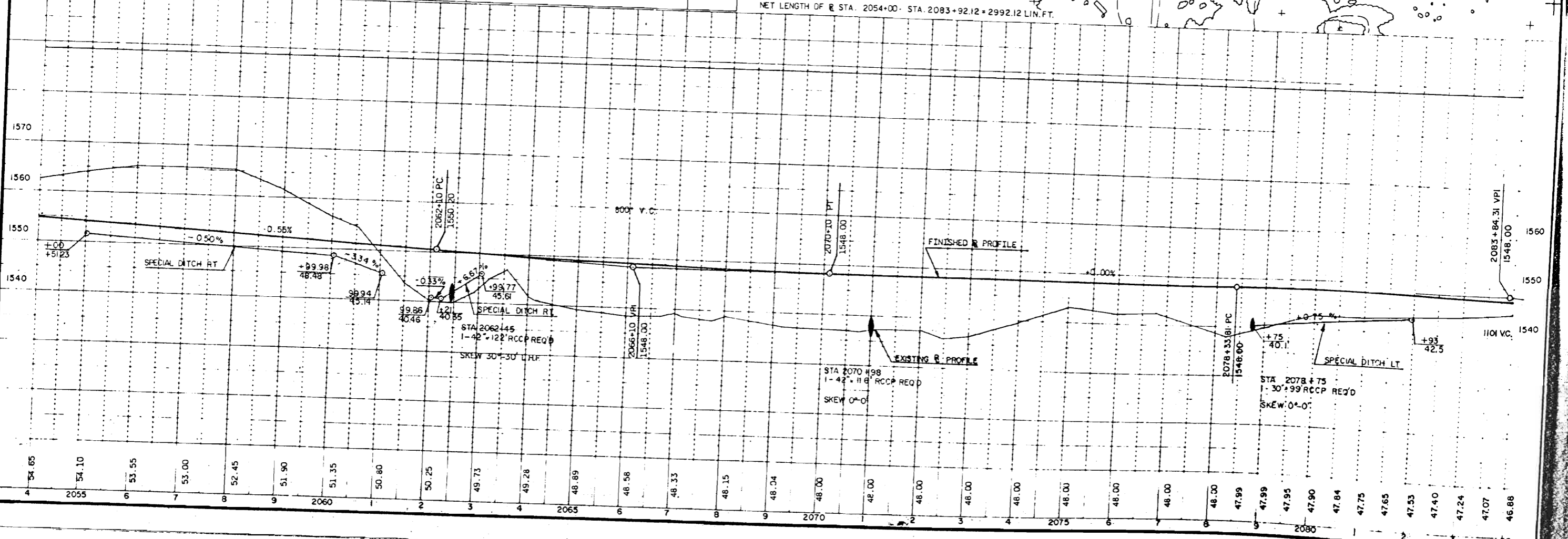
STATE PROJECT NUMBER	SHEET NO
1173-04-72	59
PLAN & PROFILE	
STA. 2054+00 R - STA. 2083+92.12	
U.S.H. 51	ONEIDA COUNTY

**CURVE 1293**  
 P. I. 2078+97.35  
 Y 167,409.10  
 X 2,081,253.76  
 64°14'29" LT.  
 1°45'  
 2,055.45'  
 3,670.94'  
 0.046 1/1  
 190'



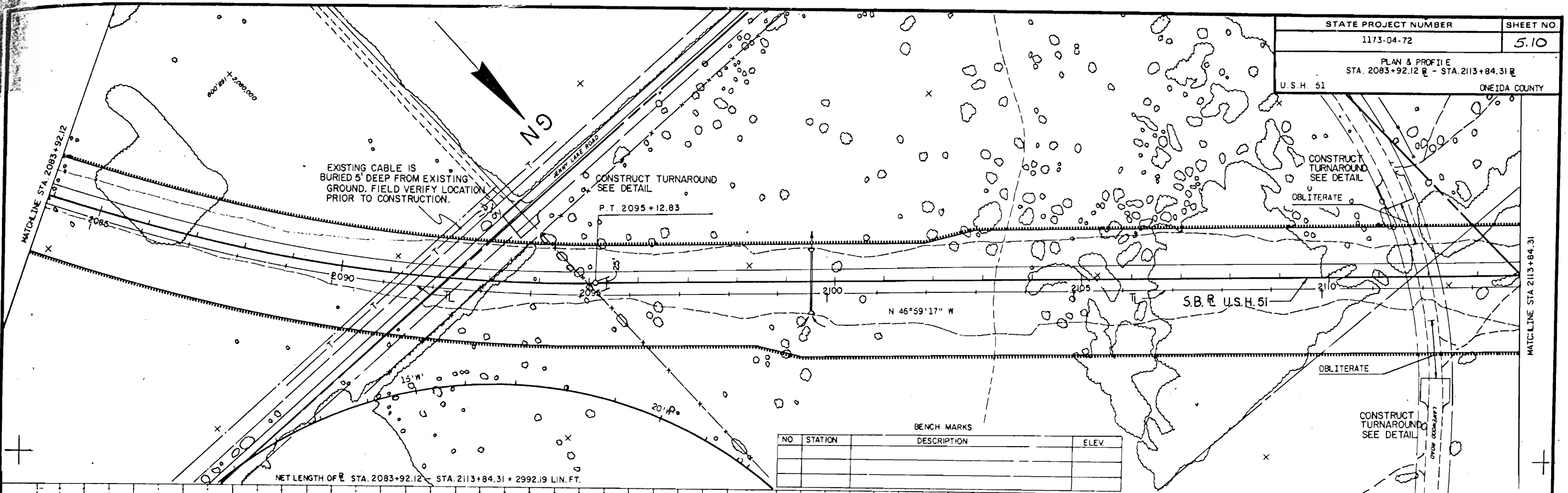
NO.	STATION	BENCH MARKS DESCRIPTION	ELEV.

NET LENGTH OF R STA. 2054+00 - STA. 2083+92.12 = 2992.12 LIN. FT.

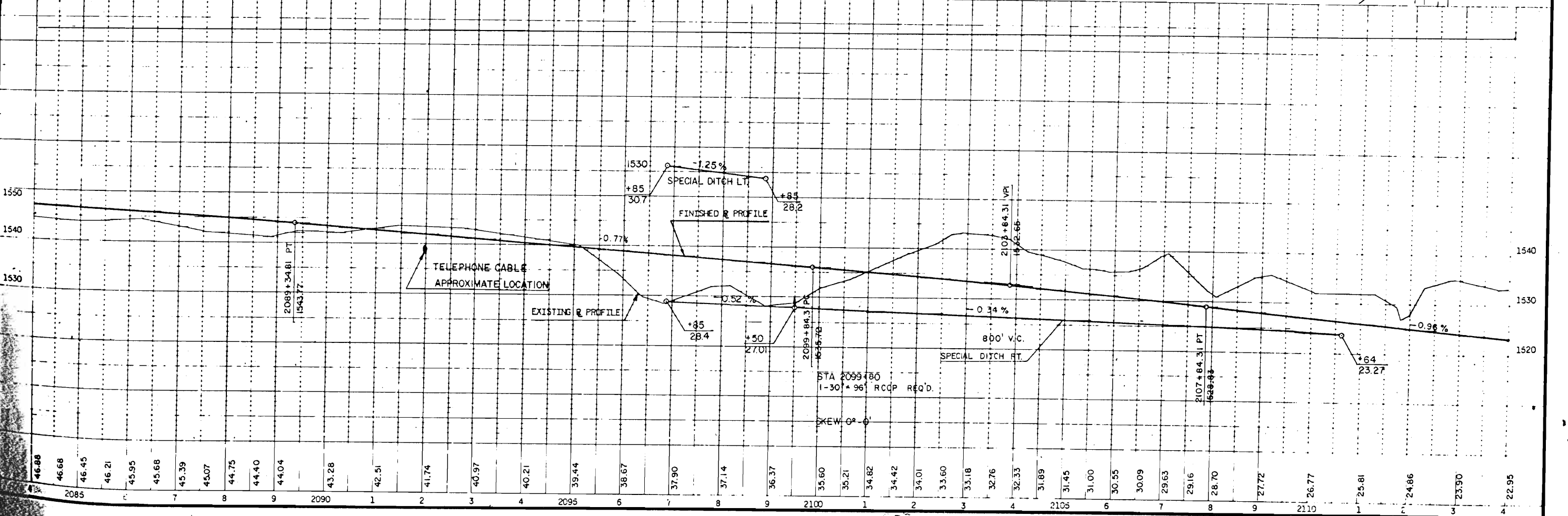


46.88

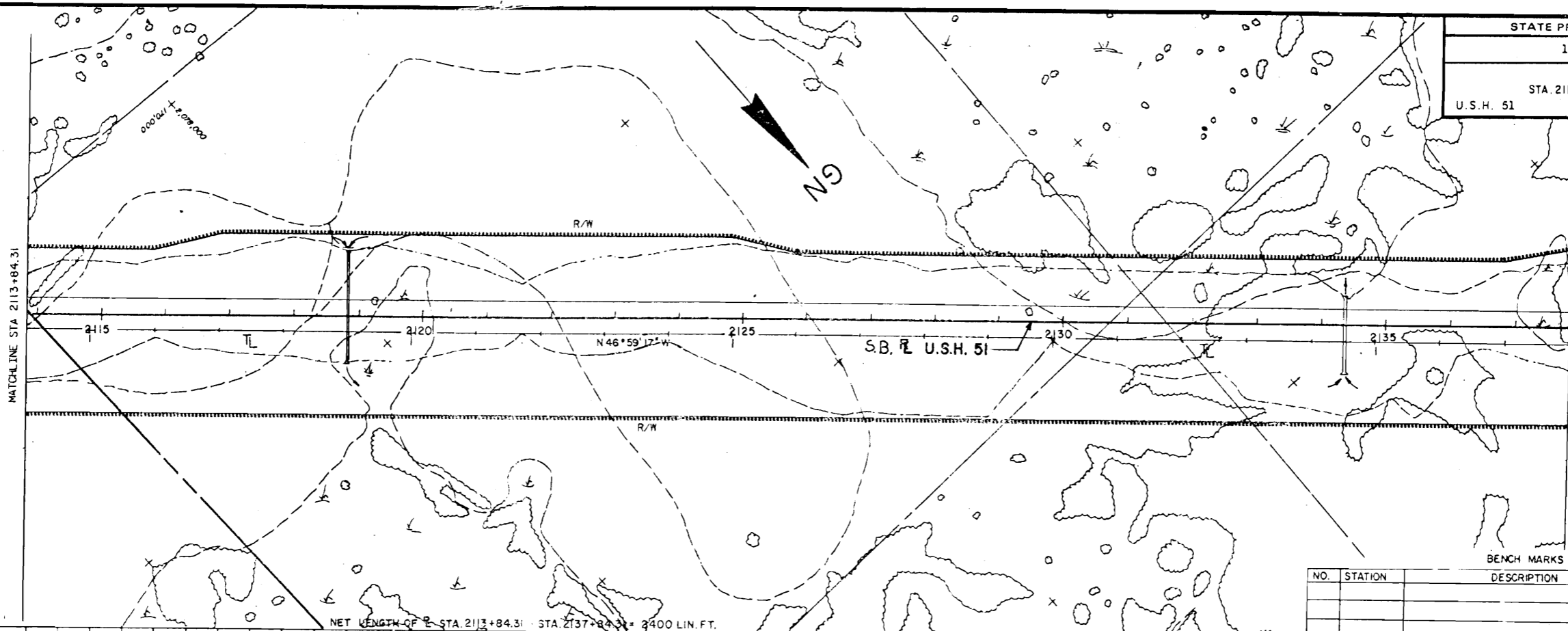
STATE PROJECT NUMBER	SHEET NO.
1173-04-72	5.10
PLAN & PROFILE STA. 2083+92.12 R - STA. 2113+84.31 R	
U.S.H. 51	ONEIDA COUNTY



BENCH MARKS			
NO.	STATION	DESCRIPTION	ELEV.



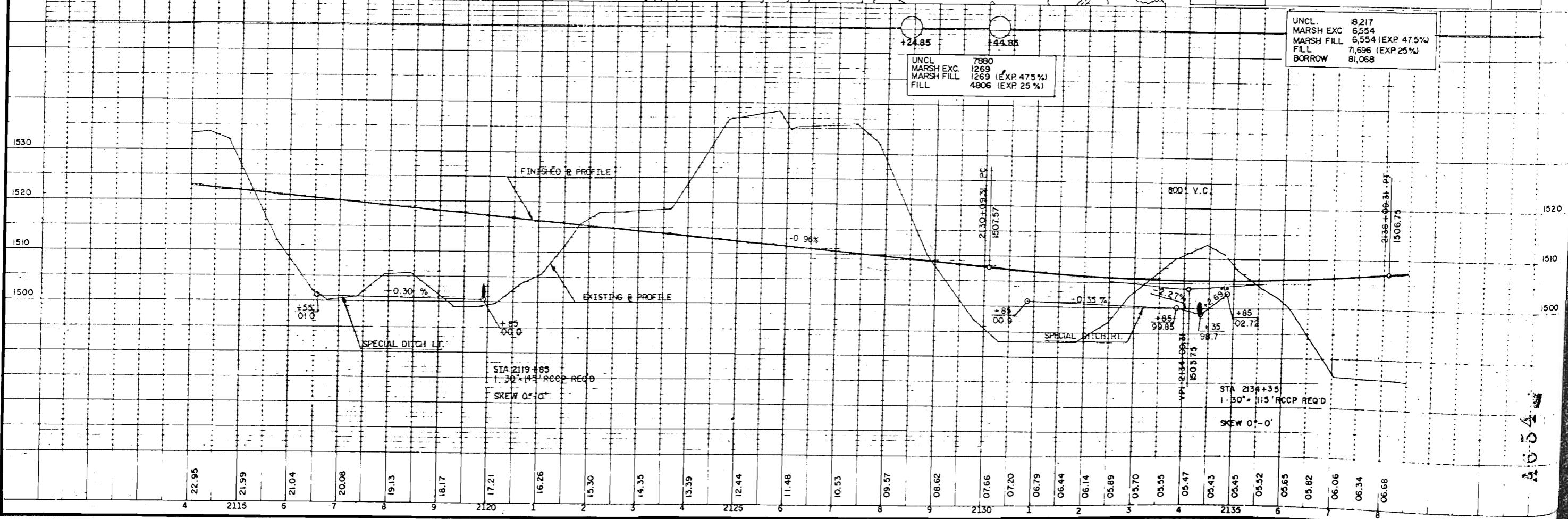
46.88	46.68	46.45	46.21	45.95	45.68	45.39	45.07	44.75	44.40	44.04	43.28	42.51	41.74	40.97	40.21	39.44	38.67	37.90	37.14	36.37	35.60	35.21	34.82	34.42	34.01	33.60	33.18	32.76	32.33	31.89	31.45	31.00	30.55	30.09	29.63	29.16	28.70	27.72	26.77	25.81	24.86	23.90	22.95		
2085		7	8	9	2090	1	2	3	4	2095	6	7	8	9	2100	1	2	3	4	2105	6	7	8	9	2110	1	2	3	4	2115	1	2	3	4	2120	1	2	3	4	2125	1	2	3	4	2130



NO.	STATION	DESCRIPTION	ELEV.

UNCL.	8,217
MARSH EXC.	6,554
MARSH FILL	6,554 (EXP 47.5%)
FILL	7,696 (EXP 25%)
BORROW	81,068

UNCL.	7,890
MARSH EXC.	1,269
MARSH FILL	1,269 (EXP 47.5%)
FILL	4,806 (EXP 25%)

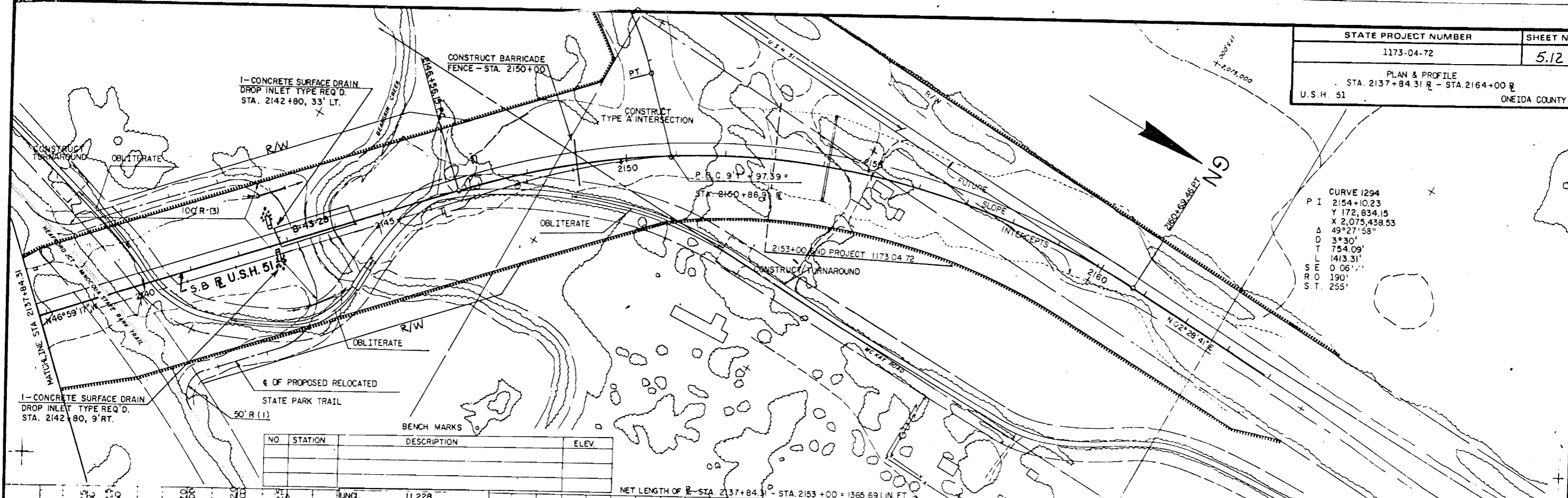


STA 2119+85  
1-30' x 145' RCCP REQ'D  
SKEW 05'-0"

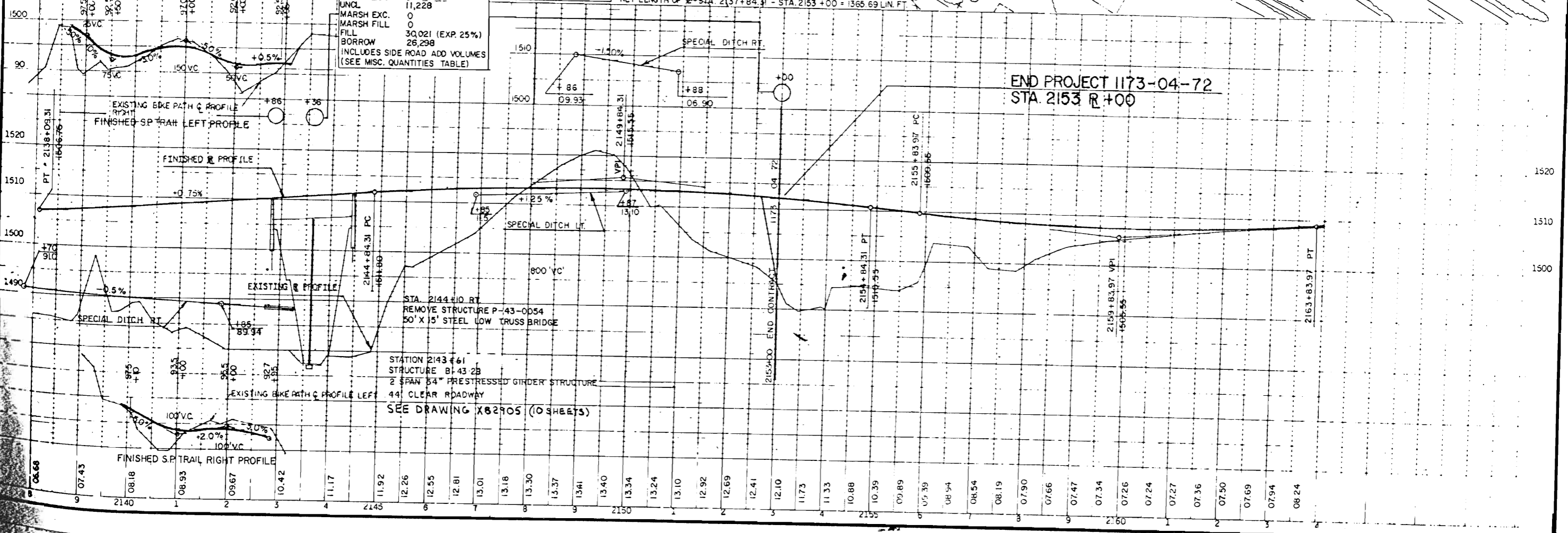
STA 2134+35  
1-30' x 115' RCCP REQ'D  
SKEW 07'-0"

A654

CURVE 1294  
 P I 2154+10.23  
 Y 172,834.15  
 X 2,075,438.53  
 Δ 49°27'58"  
 D 3°30'  
 T 754.09'  
 L 1413.31'  
 S E 0.06"  
 S R 190'  
 S T 255'



NO.	STATION	DESCRIPTION	ELEV.



A654

A654