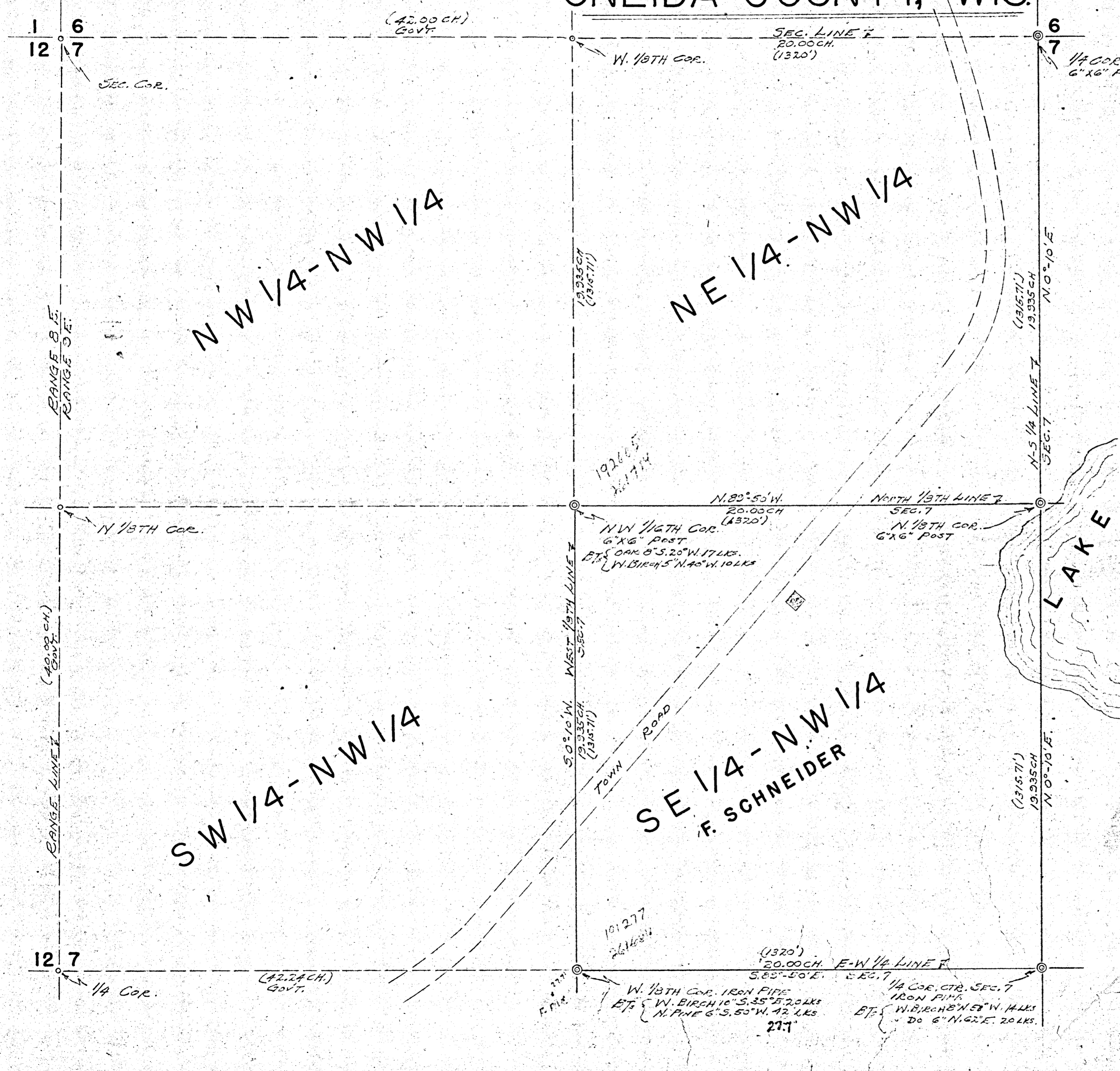


THE SE 1/4-NW 1/4 SEC. 7, T.37N. R. 9E. OF THE 4TH P.M. ONEIDA COUNTY, WIS.

EXP # B8523
 DATE FILED 7-29-2024
 BY CH
 DESCRIPTION FILED
 ONEIDA CO. SURVEYOR'S OFFICE



SURVEYOR'S CERTIFICATE

We hereby certify that we have surveyed and marked the terminal points of the SE 1/4 - NW 1/4 Sec. 7, T.37N. R. 9E. of the 4th Principal Meridian, Oneida County, Wis. and that this map is a true and correct representation of the lands so surveyed by us.

GENISOT ENGINEERING CO.
 BY F. R. WINGENTSE
 COUNTY SURVEYOR,
 ONEIDA COUNTY, WIS.
 DEC. 9, 1949.



SURVEY FOR F. SCHNEIDER KENOSHA, WIS.	
SCALE 1" = 3 CH.	DATE DEC. 9, 1949 DWN. BY F.R.W.
DWG. NO. 591-1	GENISOT ENGINEERING CO. RHNELANDER, WIS.