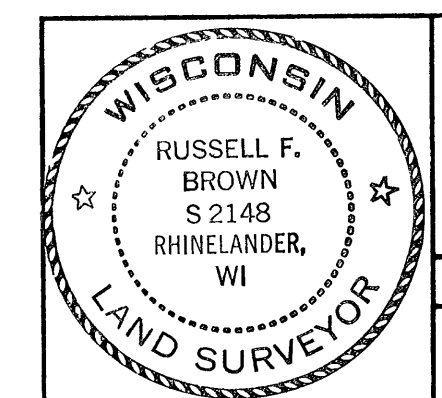
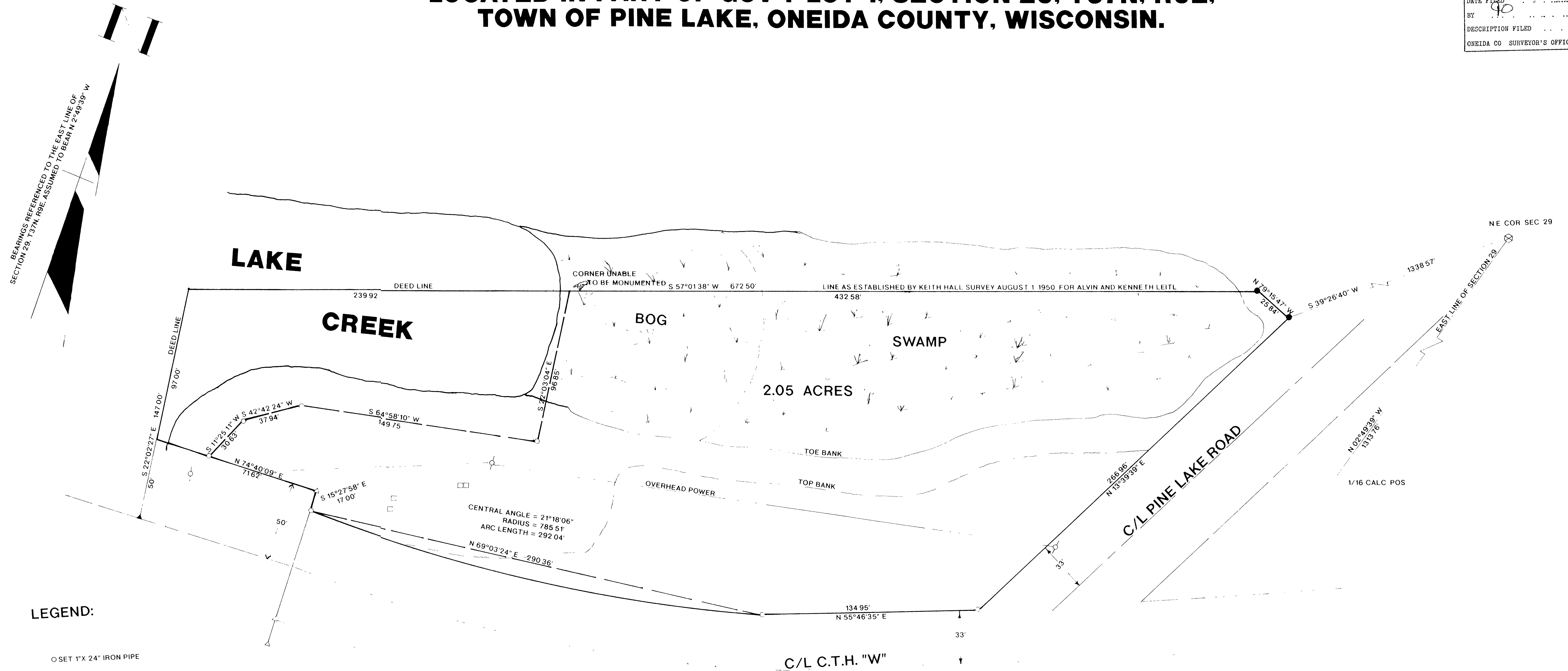


LOCATED IN PART OF GOV'T LOT 1, SECTION 29, T37N, R9E,
TOWN OF PINE LAKE, ONEIDA COUNTY, WISCONSIN.

MAP # C1005
DATE FILED AUG 16 1993
BY 90
DESCRIPTION FILED
ONEIDA CO SURVEYOR'S OFFICE



SURVEY FOR
MR. GARY GUNLACH

SCALE 1"=30' DATE 7/15/93 DWN BY KB
DWG NO 9256 GENISOT AND ASSOCIATES, INC.
RHINELANDER, WIS