

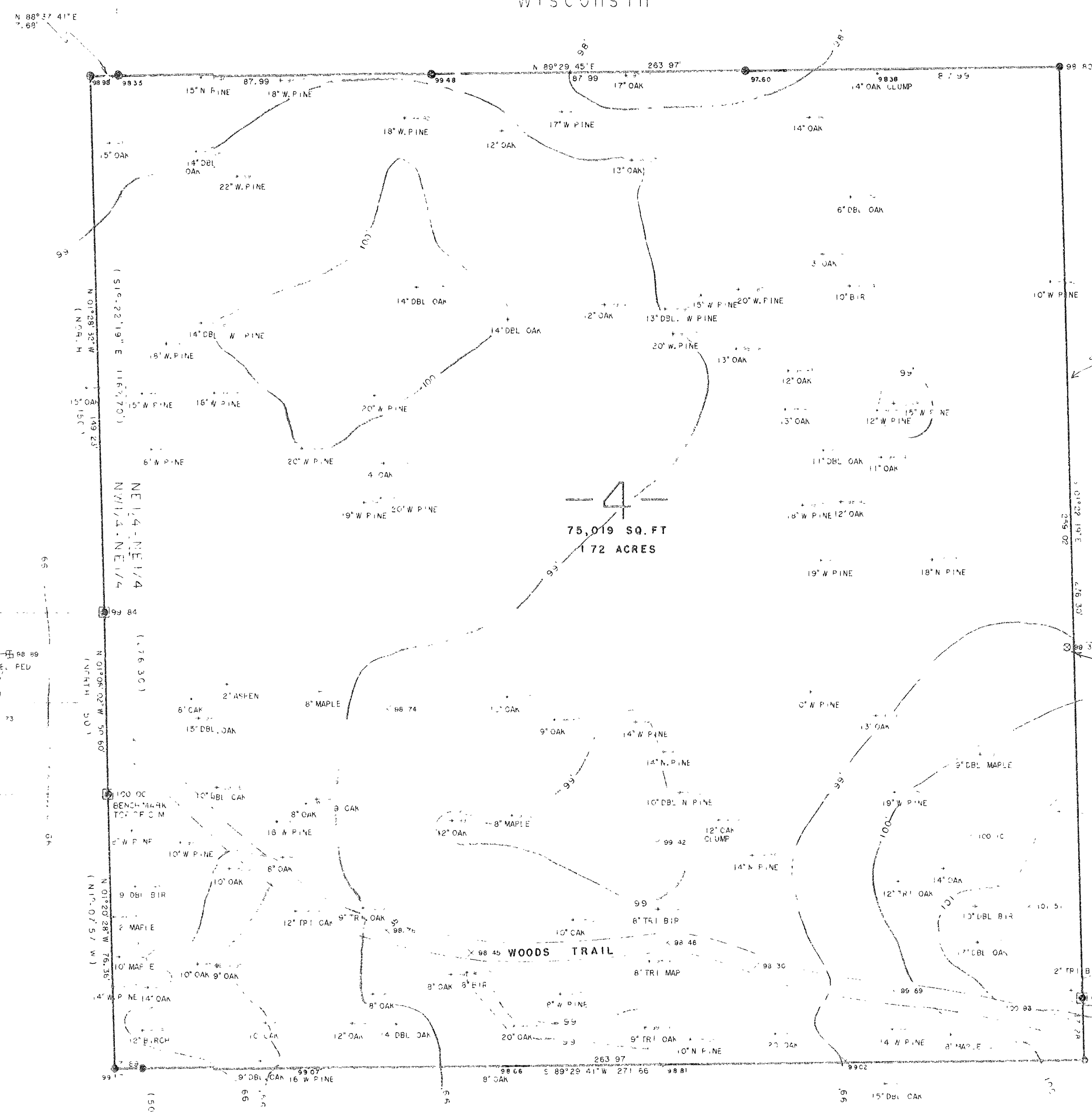
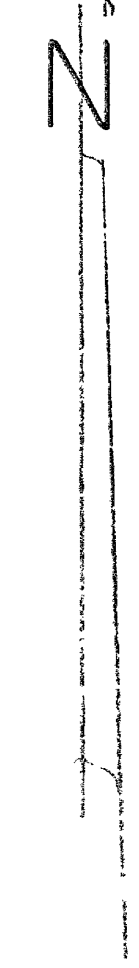
N1/4 Section 2 Section 11 2 1 1 1 2 Corner

MAP # 01128 DATE FILED MAR 15 1996 BY JLB DESCRIPTION FILED ONEIDA CO. SURVEYOR'S OFFICE

Lot 4 of CERTIFIED SURVEY MAP #1397 Vol. 5 CSM, Pages 1397 & 1397-A Oneida County Records Located in the NW1/4-NE1/4 & NE1/4-NE1/4 Section 11, T 39 N, R 6 E Township of Minocqua, Oneida County Wisconsin

R/W LINE

GRID NORTH WISCONSIN COORDINATE SYSTEM, NORTH ZONE BASED ON SOLAR OBSERVATION



W P S

GRAVEL PARKING LOT

GRAVEL MAY ENCRDACH IN PLACES ALONG THIS LINE

UTILITIES

NOTE 6" GAS LINE (60 LB.) BIPHASE ELEC ON NORTH SIDE OF C.T.H. 3" 400 ± NORTH OF SITE 1 1/4" GAS LINE (60 LB.) BIPHASE ELEC ON EAST SIDE OF PARKING PLANT ROAD 30" ± WEST OF SITE

SETBACKS

REAR & SIDE YARD SETBACK IS NOT LESS THAN 10' SETBACK FROM TOURNAMENT CENTER LINE IS 10'

6" WATER MAIN (60 LB.) 8" NORTH OF MANHOLE 7" ± UNDERGROUND

HANDRICK ROAD

4 75,019 SQ. FT. 1.72 ACRES

SURVEYOR'S CERTIFICATE

I HEREBY CERTIFY THAT I HAVE SURVEYED AND MAPPED THE LANDS SHOWN HEREON AND THAT, TO THE BEST OF MY KNOWLEDGE AND BELIEF, SAID SURVEY AND MAP IS A TRUE AND CORRECT REPRESENTATION THEREOF, AND THAT I HAVE COMPLIED WITH THE MINIMUM STANDARDS FOR PROPERTY SURVEYS OF THE STATE OF WISCONSIN

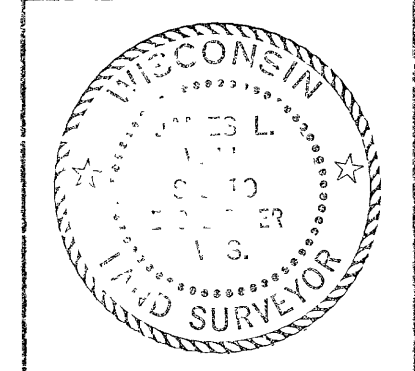
DATED THIS 27th DAY OF DECEMBER, 1995

James L. Will, SLS 1410

- 1/2" IRON PIPE FOUND IN PLACE
PK NAIL FOUND IN PLACE
ONEIDA COUNTY ALUMINUM MONUMENT FOUND IN PLACE
1" IRON PIPE FOUND IN PLACE
5'X5' CONCRETE MONUMENT FOUND IN PLACE
TREE
MANHOLE
TELEPHONE PED.
ABANDONED POWER POLE OR LIGHT POLE
GROUND SHOT
COMPUTED POSITION
BEARING AND DISTANCE OF RECORD

NOTE: GRID LENGTHS ARE SHOWN HEREON AND MAY BE CONVERTED TO GROUND LENGTHS BY MULTIPLYING MAP DISTANCES BY 1.000055

Witness Corner NE 1/16



TOPOGRAPHIC SURVEY IMPACT 7 100 DIGITAL DRIVE CLEAR LAKE, W 54005 SCALE 1" = 20' DATA 12-27-94 DWN BY JLLW DWG NO E 9851 Eagle Landmark Surveying, Inc. EAGLE RIVER, WI