

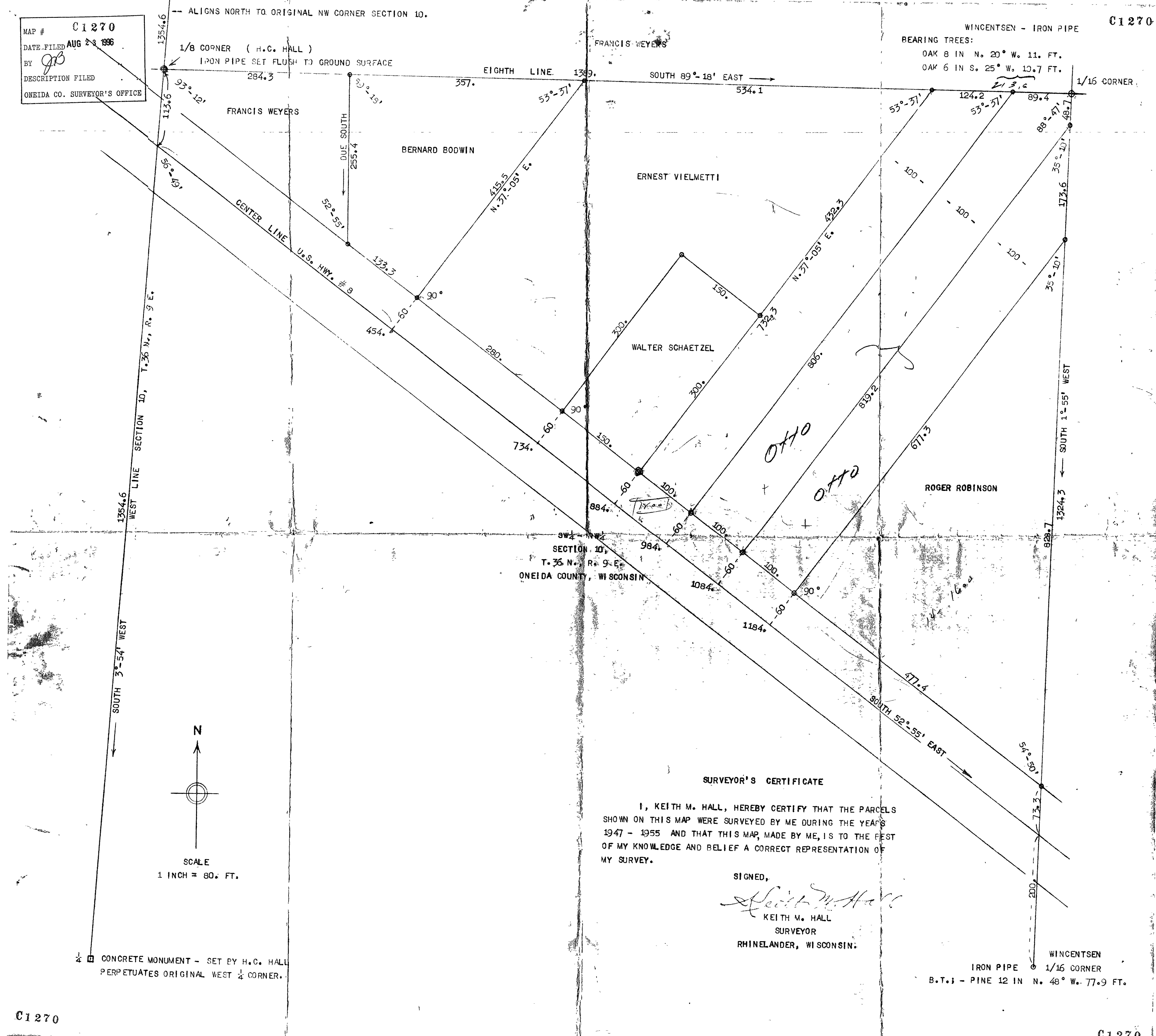
MAP # C1270
 DATE FILED AUG 23 1996
 BY *gjh*
 DESCRIPTION FILED
 ONEIDA CO. SURVEYOR'S OFFICE

ALIGNS NORTH TO ORIGINAL NW CORNER SECTION 10.

1/8 CORNER (H.C. HALL)
 IRON PIPE SET FLUSH TO GROUND SURFACE

WINCENTSEN - IRON PIPE
 BEARING TREES:
 OAK 8 IN N. 20° W. 11. FT.
 OAK 6 IN S. 25° W. 10.7 FT.

C1270



SECTION 10,
 T. 36 N., R. 9 E.
 ONEIDA COUNTY, WISCONSIN

SURVEYOR'S CERTIFICATE

I, KEITH M. HALL, HEREBY CERTIFY THAT THE PARCELS SHOWN ON THIS MAP WERE SURVEYED BY ME DURING THE YEARS 1947 - 1955 AND THAT THIS MAP, MADE BY ME, IS TO THE BEST OF MY KNOWLEDGE AND BELIEF A CORRECT REPRESENTATION OF MY SURVEY.

SIGNED,
Keith M. Hall
 KEITH M. HALL
 SURVEYOR
 RHINELANDER, WISCONSIN.

CONCRETE MONUMENT - SET BY H.C. HALL
 PERPETUATES ORIGINAL WEST 1/4 CORNER.

WINCENTSEN
 IRON PIPE 1/16 CORNER
 B.T. - PINE 12 IN N. 48° W. 77.9 FT.

C1270

C1270