

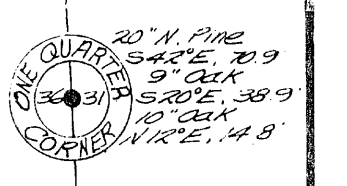
MAP # C1320
 DATE FILED JAN 27 1972
 BY *gpb*
 DESCRIPTION FILED
 ONEIDA CO. SURVEYOR'S OFFICE

C1320

Part of
GOV'T. LOT 1
SECTION 36, T38N, R6E
 Oneida County, Wis.

● = iron pipe found in place
 ○ = iron pipe set

Schrippe Magnetic

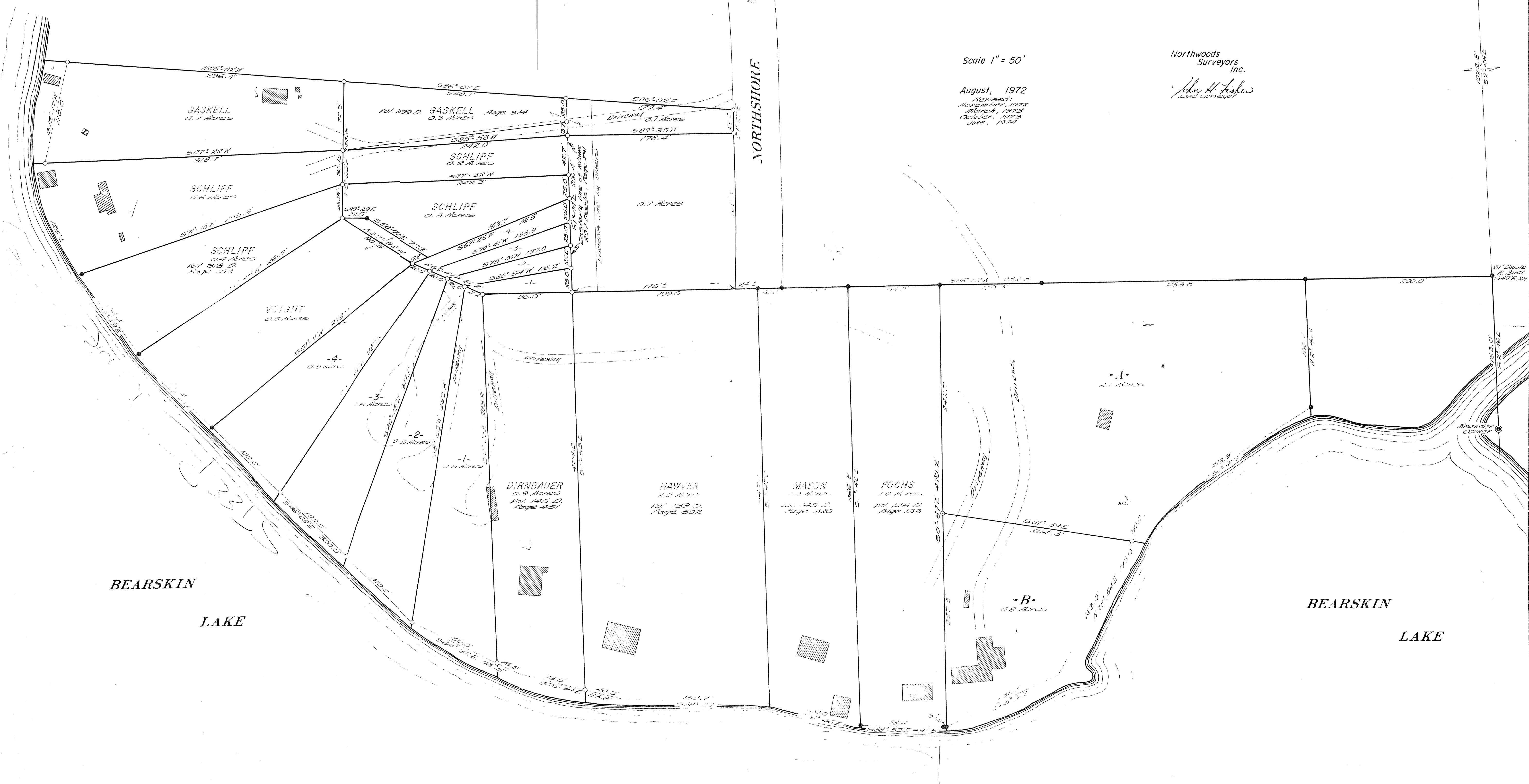


Scale 1" = 50'

Northwoods
 Surveyors
 Inc.

John H. Fisher
 Licensed Surveyor

August, 1972
 Revised:
 November, 1972
 March, 1973
 October, 1973
 June, 1974



C1320

C1320