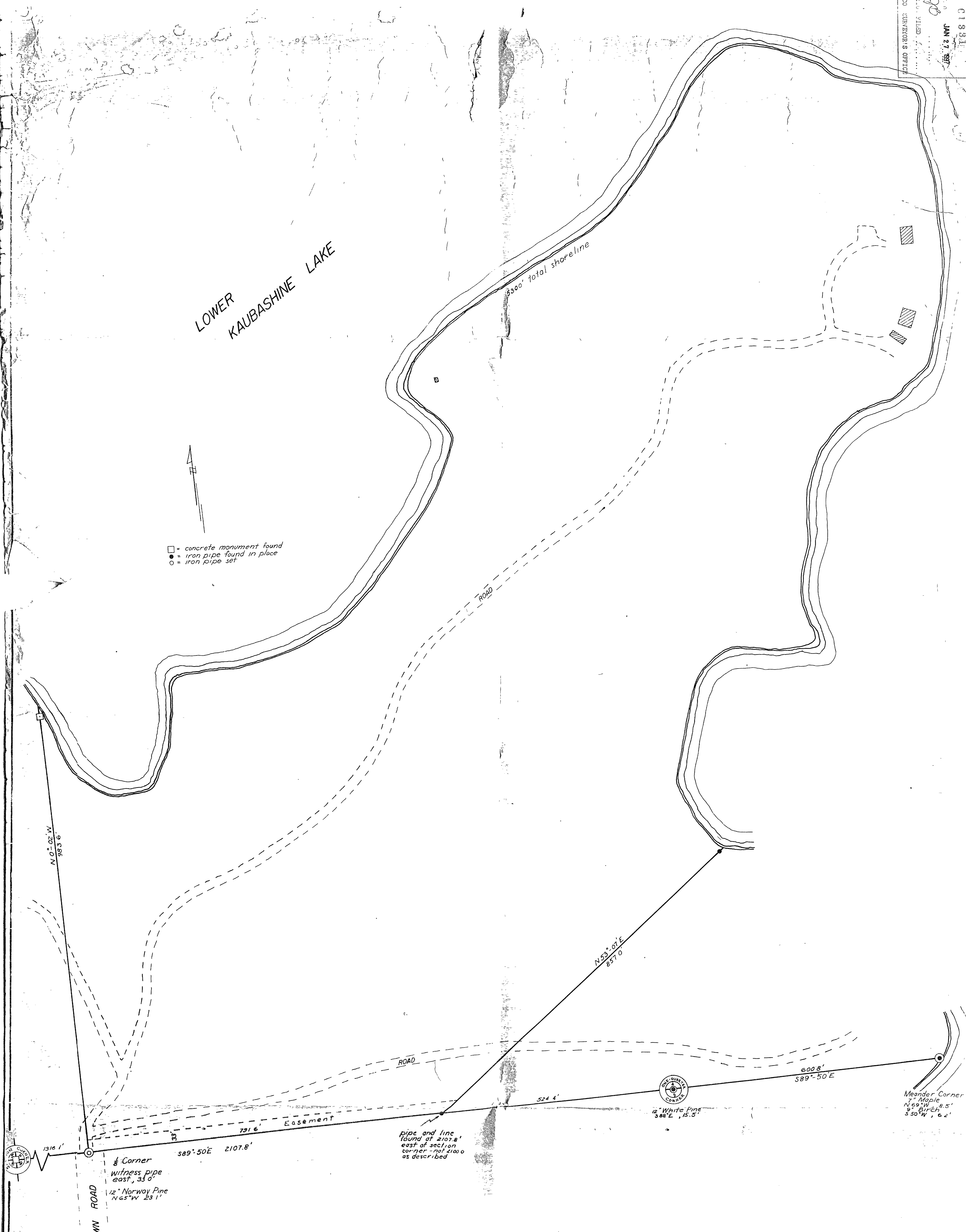


01931

MAP # 01931  
DATE FILED JAN 27 1966  
DISSEMINATED BY  
ONEIDA CO. SURVEYOR'S OFFICE

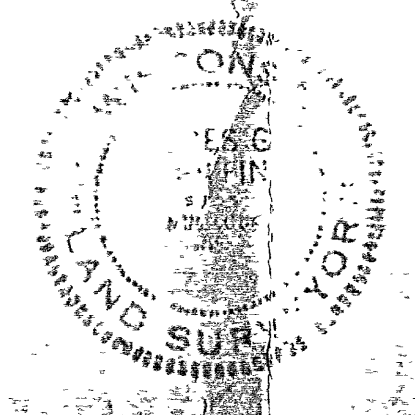
LOWER KAUBASHINE LAKE

- = concrete monument found
- = iron pipe found in place
- = iron pipe set



GOV'T. LOT 6  
SECTION 4  
T 38 N, R 6E  
Oneida County, Wis.

Scale 1" = 100'  
July, 1966



Northwoods Surveyors  
James D. Luffe  
Land Surveyor

813

6813