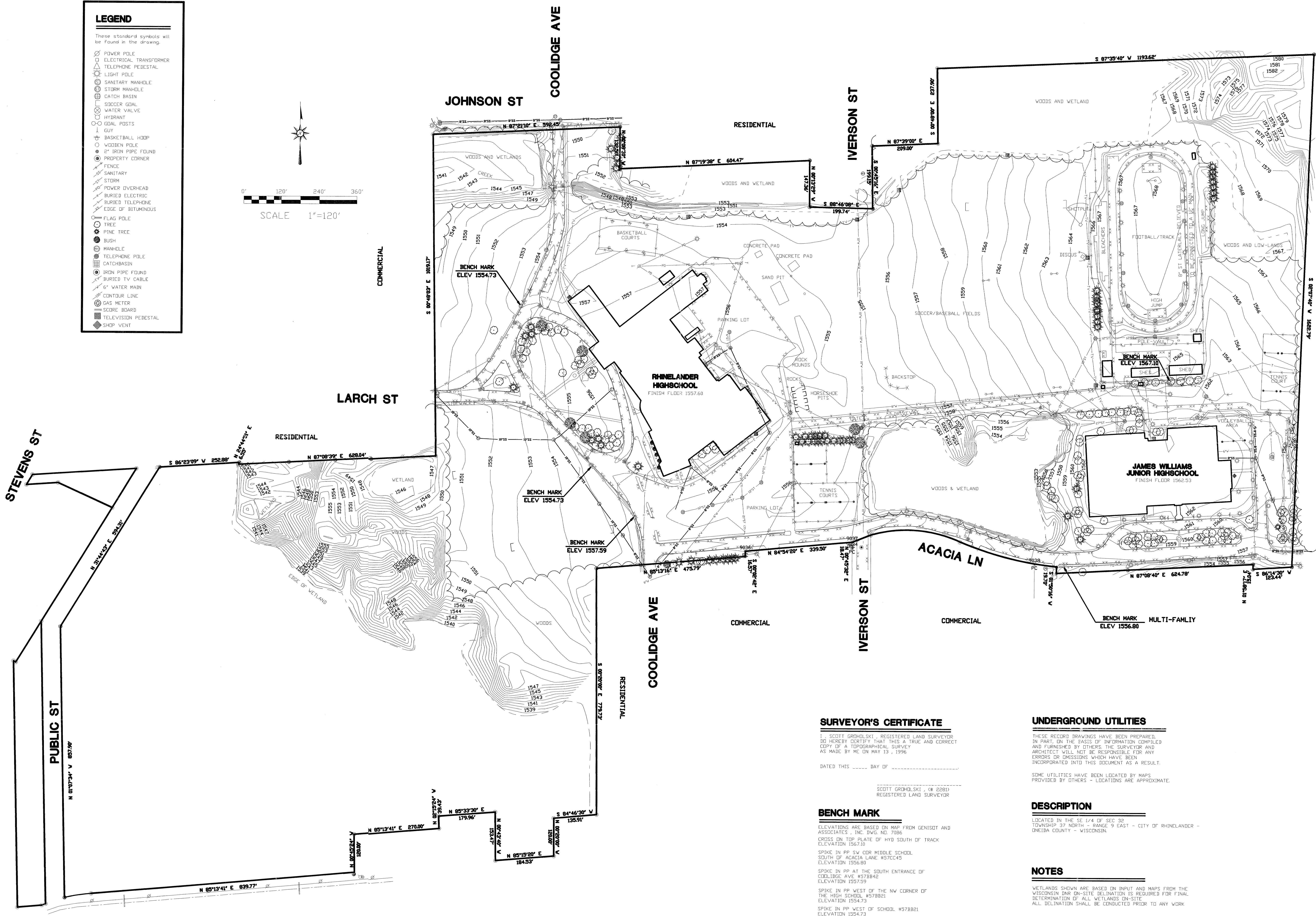
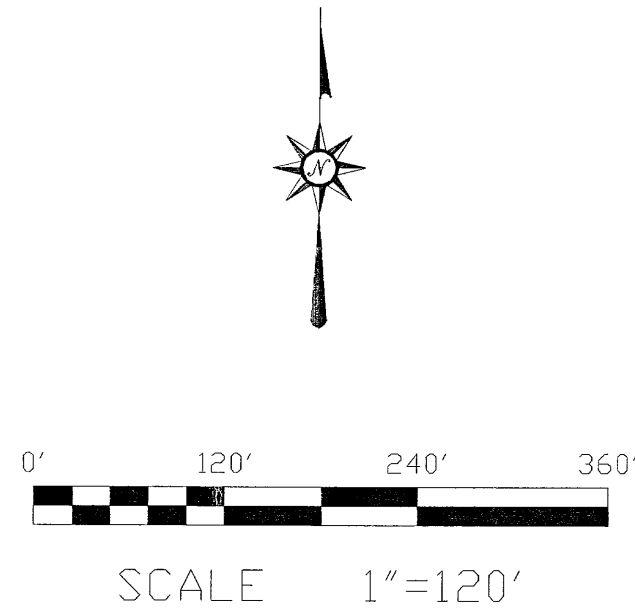


BY: JG
DESCRIPTION FILED
ONEIDA CO. SURVEYOR'S OFFICE

LEGEND

These standard symbols will be found in the drawing.

- POWER POLE
- ELECTRICAL TRANSFORMER
- TELEPHONE PEDESTAL
- LIGHT POLE
- SANITARY MANHOLE
- STORM MANHOLE
- CATCH BASIN
- SOCCER GOAL
- WATER VALVE
- HYDRANT
- ODAL POSTS
- GUY
- BASKETBALL HOOP
- WOODEN POLE
- 2" IRON PIPE FOUND
- PROPERTY CORNER
- FENCE
- SANITARY
- STORM
- POWER OVERHEAD
- BURIED ELECTRIC
- BURIED TELEPHONE
- EDGE OF BITUMINOUS
- FLAG POLE
- TREE
- PINE TREE
- BUSH
- MANHOLE
- TELEPHONE POLE
- CATCH BASIN
- IRON PIPE FOUND
- BURIED TV CABLE
- 6" WATER MAIN
- CONTOUR LINE
- GAS METER
- SCORE BOARD
- TELEVISION PEDESTAL
- SHOP VENT



SURVEYOR'S CERTIFICATE

I, SCOTT GRODOLSKI, REGISTERED LAND SURVEYOR DO HEREBY CERTIFY THAT THIS IS A TRUE AND CORRECT COPY OF A TOPOGRAPHICAL SURVEY AS MADE BY ME ON MAY 13, 1996

DATED THIS ____ DAY OF _____

SCOTT GRODOLSKI, (# 2288)
REGISTERED LAND SURVEYOR

BENCH MARK

ELEVATIONS ARE BASED ON MAP FROM GENISOT AND ASSOCIATES, INC. DVG. NO. 7086
CROSS ON TOP PLATE OF HYD SOUTH OF TRACK
ELEVATION 1567.10
SPIKE IN PP SW COR MIDDLE SCHOOL
SOUTH OF ACACIA LANE #570045
ELEVATION 1556.80
SPIKE IN PP AT THE SOUTH ENTRANCE OF
COOLIDGE AVE #578845
ELEVATION 1557.59
SPIKE IN PP WEST OF THE NW CORNER OF
THE HIGH SCHOOL #578821
ELEVATION 1554.73
SPIKE IN PP WEST OF SCHOOL #578821
ELEVATION 1554.73

UNDERGROUND UTILITIES

THESE RECORD DRAWINGS HAVE BEEN PREPARED IN PART ON THE BASIS OF INFORMATION COMPILED AND FURNISHED BY OTHERS. THE SURVEYOR AND ARCHITECT WILL NOT BE RESPONSIBLE FOR ANY ERRORS OR OMISSIONS WHICH HAVE BEEN INCORPORATED INTO THIS DOCUMENT AS A RESULT.

SOME UTILITIES HAVE BEEN LOCATED BY MAPS PROVIDED BY OTHERS - LOCATIONS ARE APPROXIMATE.

DESCRIPTION

LOCATED IN THE SE 1/4 OF SEC 32
TOWNSHIP 37 NORTH - RANGE 9 EAST - CITY OF RHINELANDER - ONEIDA COUNTY - WISCONSIN

NOTES

WETLANDS SHOWN ARE BASED ON INPUT AND MAPS FROM THE WISCONSIN DNR ON-SITE DELINEATION IS REQUIRED FOR FINAL DETERMINATION OF ALL WETLANDS ON-SITE
ALL DELINEATION SHALL BE CONDUCTED PRIOR TO ANY WORK
SCHOOL BOUNDARY IS BASED ON MAPS PROVIDED BY GENISOT AND ASSOCIATES

REVISIONS	
DATE	5/9/96
DRAWN	DAN PERLINSKI
CHECKED	RICK RETTLER
R.H. RETTLER & ASSOCIATES, INC. 945-A MAIN STREET ■ STEVENS POINT, WISCONSIN 54481 ■ TELEPHONE: 715-341-2633	
LANDSCAPE ARCHITECTURE ■ RECREATIONAL ARCHITECTURE ■ SITE CONSTRUCTION MANAGEMENT	
CITY OF RHINELANDER RHINELANDER HIGH SCHOOL	
TOPO	