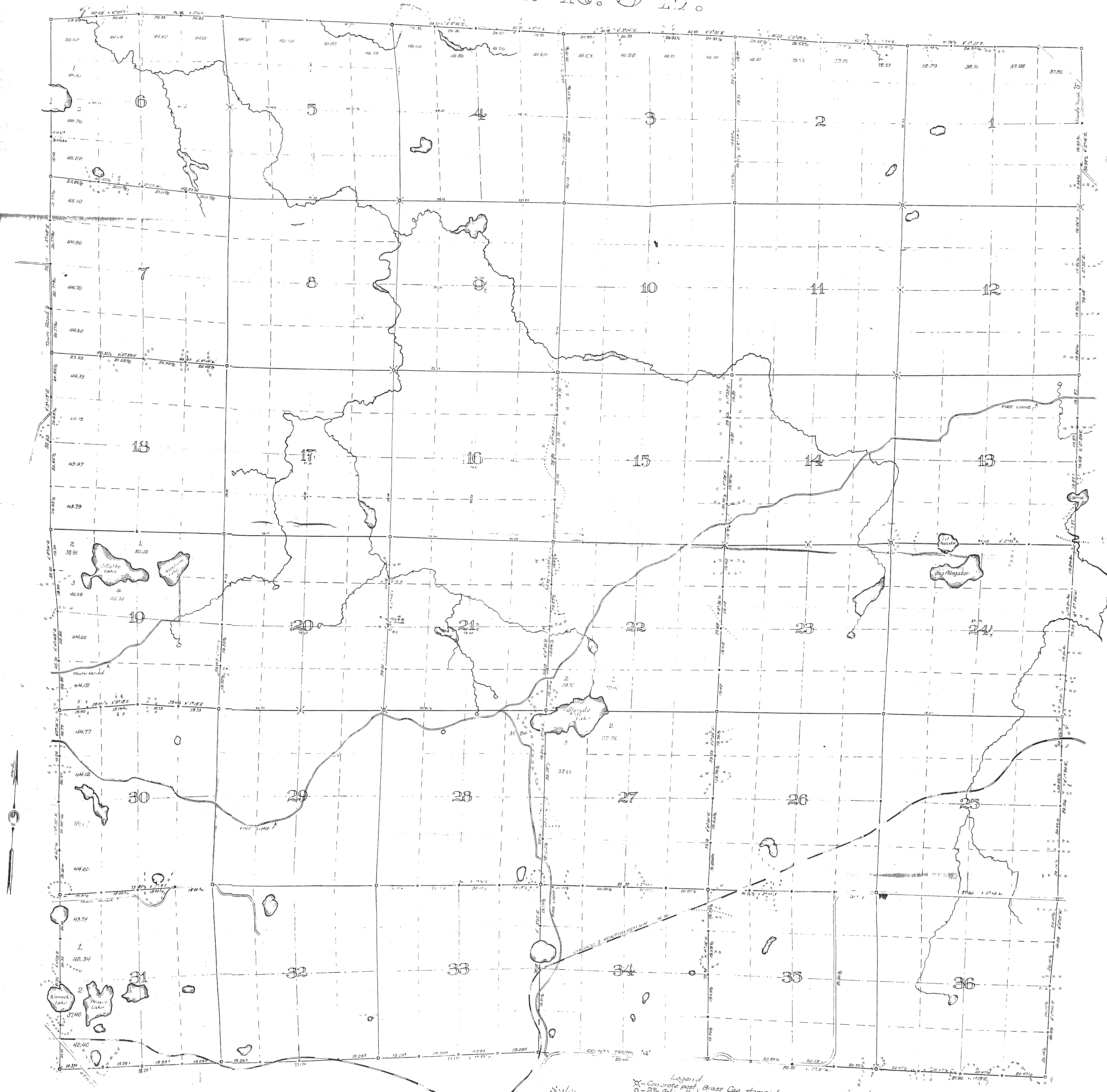


MAP # C1665  
 DATE FILED ~~C1665~~  
 BY ~~...~~ MAR 08 2000  
 DESCRIPTION FILED  
 ONYIDA CO. SURVEYOR'S OFFICE



Legend  
 X - Concrete post, Brass Cap, stamped  
 O - 2 1/2" Galvanized steel, Brass Cap, stamped,  
 except 1/8" slates which are squared  
 T - or Cedar, scribed

Compiled for Onyida County Forestry Comm.  
 Wisconsin Conservation Comm. (Forestry)  
 W.A. Mair, Onyida County, Surveyor  
 Survey of 1936; Platation 1937

ALL  
 (35-4)  
 Enclosure