

C1991

PART OF GOV'T. LOT 8  
SEC. 15, T 38 N, R 7 E

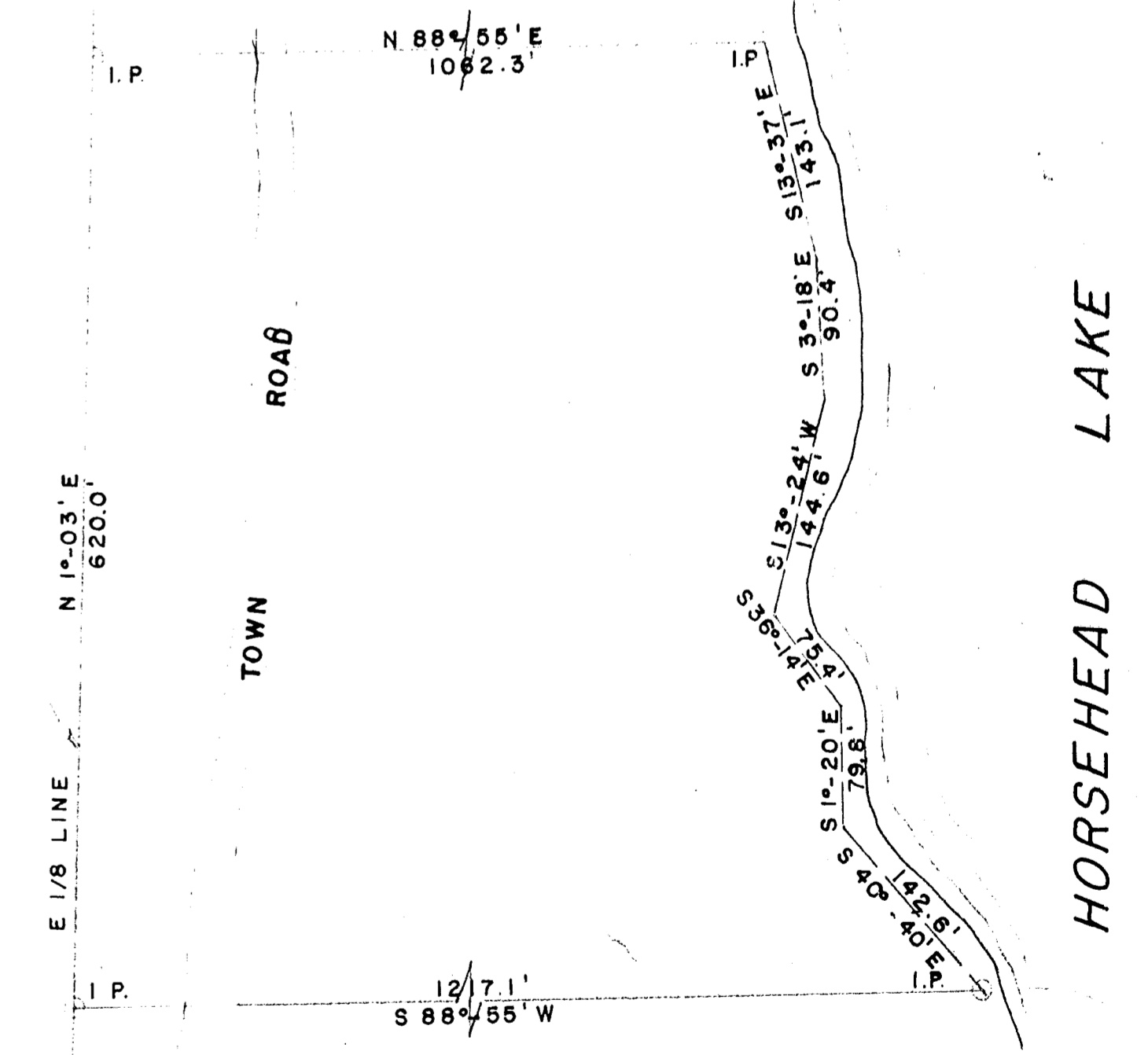
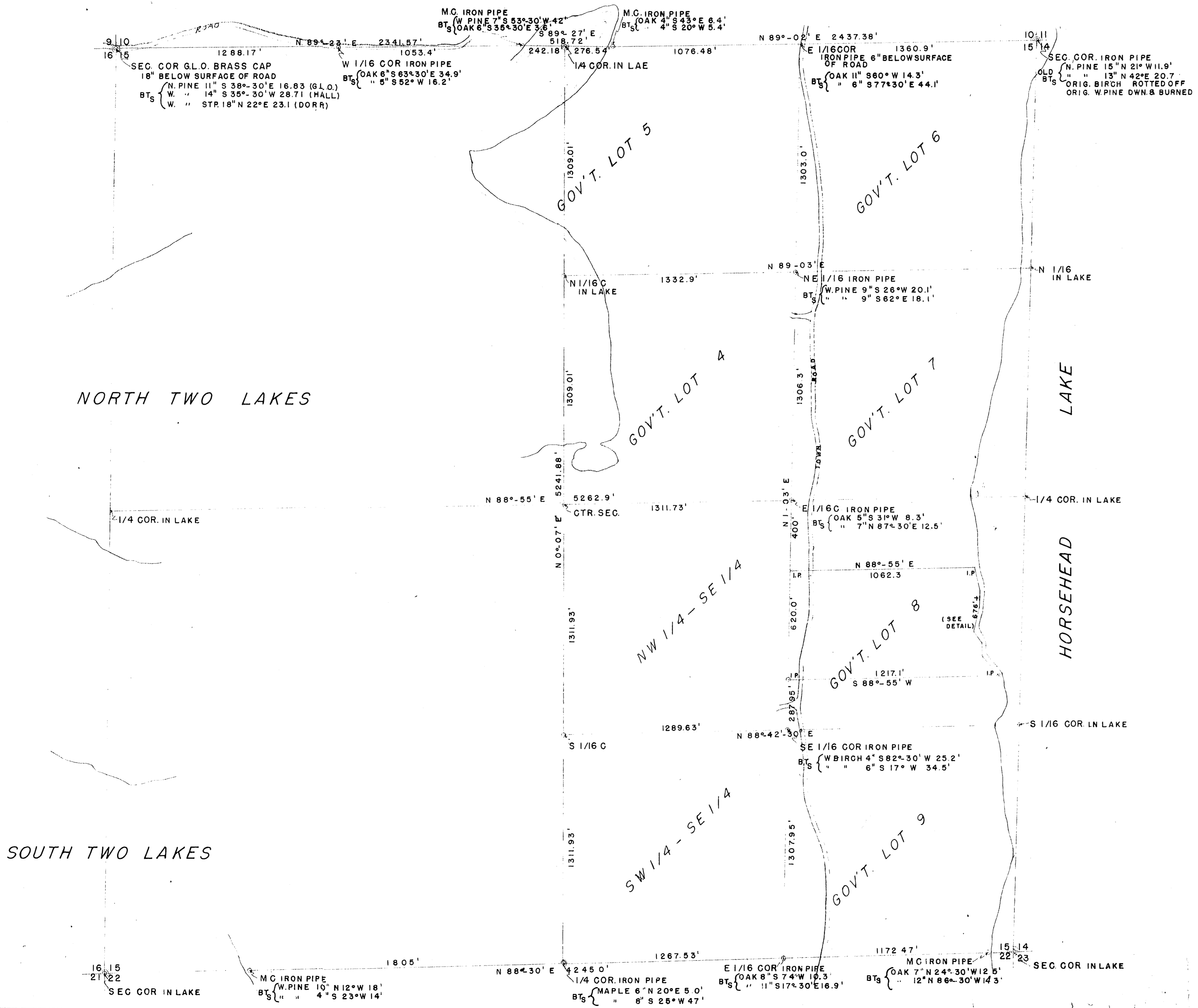
MAP # C1991  
DATE FILED... SEP. 5. 2009.  
BY.....  
DESCRIPTION FILED.....  
ONEIDA CO. SURVEYOR'S OFFICE

SURVEYOR'S CERTIFICATE

WE HEREBY CERTIFY THAT WE HAVE SURVEYED  
A PARCEL OF LAND IN GOV'T. LOT 8, SEC. 15,  
T 38 N, R 7 E OF THE 4TH P.M., ONEIDA COUNTY  
WISCONSIN, AND THAT THIS PLAT IS A TRUE AND  
CORRECT REPRESENTATION OF THE LAND SO SURVEYED  
BY US.

GENISOT ENGINEERING CO.  
*R.E. Bandow*  
R.E. BANDOW SURVEYOR

N  
MERIDIAN  
MAG. DEC. 2° 30' E



DETAIL OF LAKESHORE TRAVERSE  
SCALE: 1"=100'

SURVEY FOR	
GEORGE E. ANDERSON	
17 A. S. BROWN STREET RHINELANDER, WIS.	
SCALE 1"=300'	DATE 7/20/54
DWG. NO.	DWN BY R.E.B.
1477	GENISOT ENGINEERING CO. RHINELANDER, WIS.