

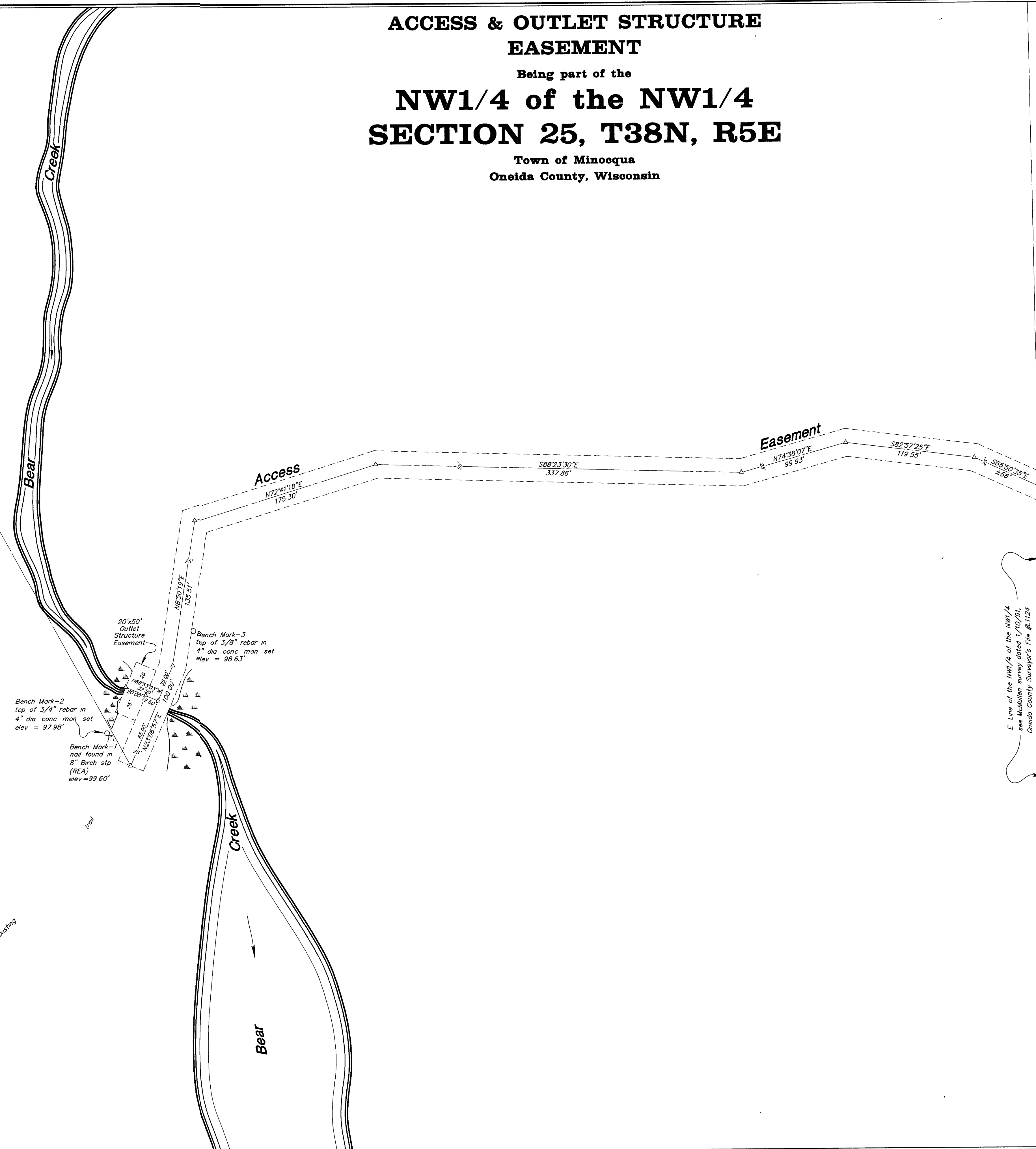
ACCESS & OUTLET STRUCTURE EASEMENT

Being part of the

**NW1/4 of the NW1/4
SECTION 25, T38N, R5E**

**Town of Minocqua
Oneida County, Wisconsin**

MAP # C2128
DATE FILED MAR 18 2005...
BY *AP*
FILED
OKLAHOMA COUNTY SHERIFF'S OFFICE



*E Line of the NW1/4 of the NW1/4
see McMullen survey dated 1/10/91,
Oneida County Surveyor's File #L1124*

Bearings Assumed

Scale 1" = 50'

0' 25' 50' 100'

Foltz and Associates, Inc.

Surveyors	Engineers
8612 Highway 51 North	Minocqua, Wisconsin 54548
(715) 356-9485	fax (715) 356-1841

C Winkler 4-25-385