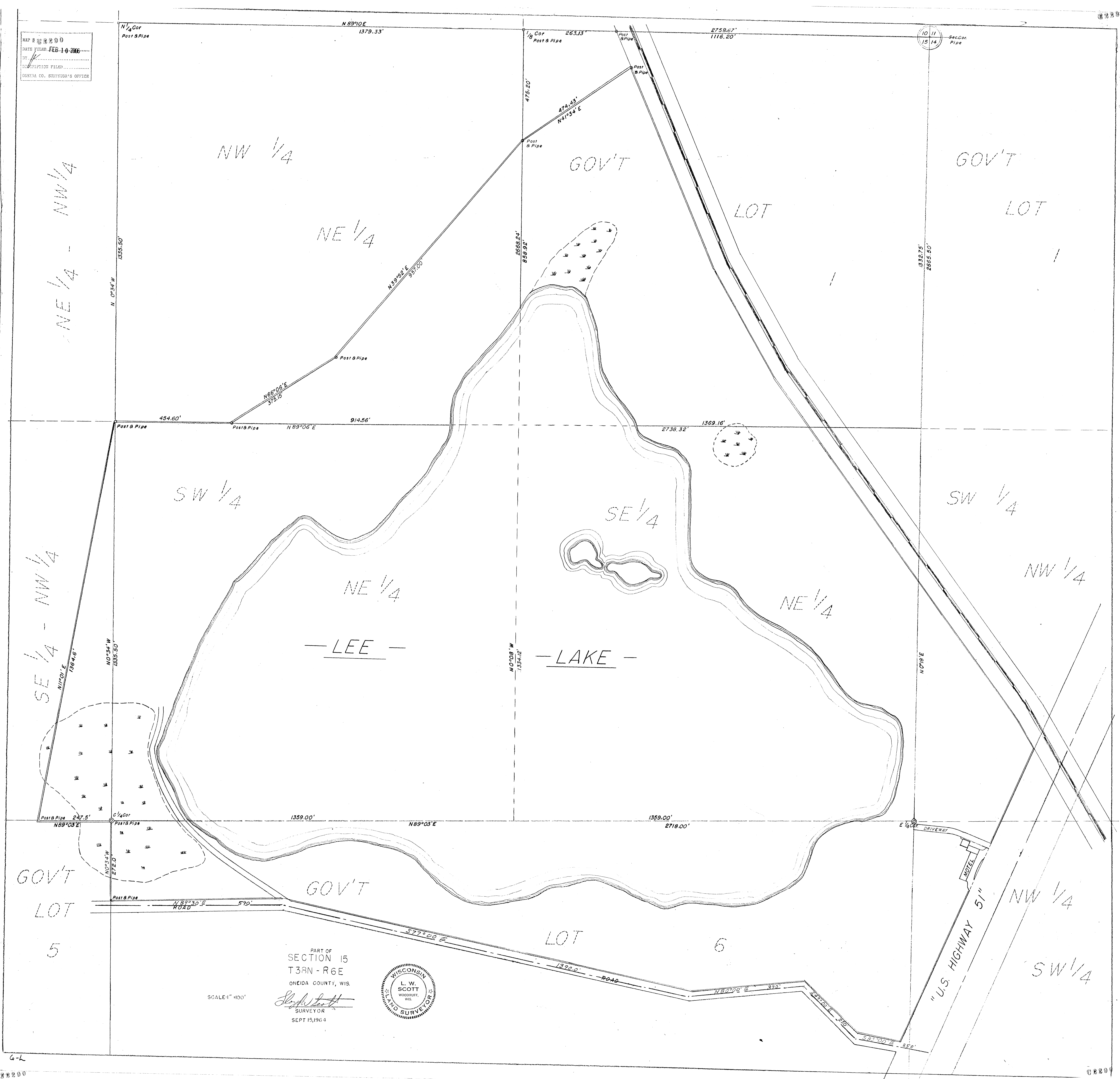


MAP 8 8890  
DATE FILED FEB-10-2006  
BY  
DESCRIPTION FILED  
ONEIDA CO. SURVEYOR'S OFFICE

N 89°10' E 1379.33' N 1/4 Cor Post & Pipe  
N 89°06' E 914.56' N 1/8 Cor Post & Pipe 263.13' 479.20' 2758.67' 1116.20' 10 11 15 14 Sec. Cor. Pipe



NE 1/4 - NW 1/4

NW 1/4

NE 1/4

GOV'T

LOT

GOV'T

LOT

SW 1/4

SE 1/4

SW 1/4

SE 1/4 - NW 1/4

NE 1/4

NW 1/4

— LEE —

— LAKE —

NE 1/4

GOV'T  
LOT  
5

GOV'T

LOT  
6

NW 1/4

SW 1/4

PART OF  
SECTION 15  
T38N - R6E  
ONEIDA COUNTY, WIS.  
L. W. SCOTT  
WOODRUFF,  
WIS.  
SURVEYOR  
SEPT 15, 1964



SCALE 1" = 400'

"U.S. HIGHWAY 51"  
MOTEL