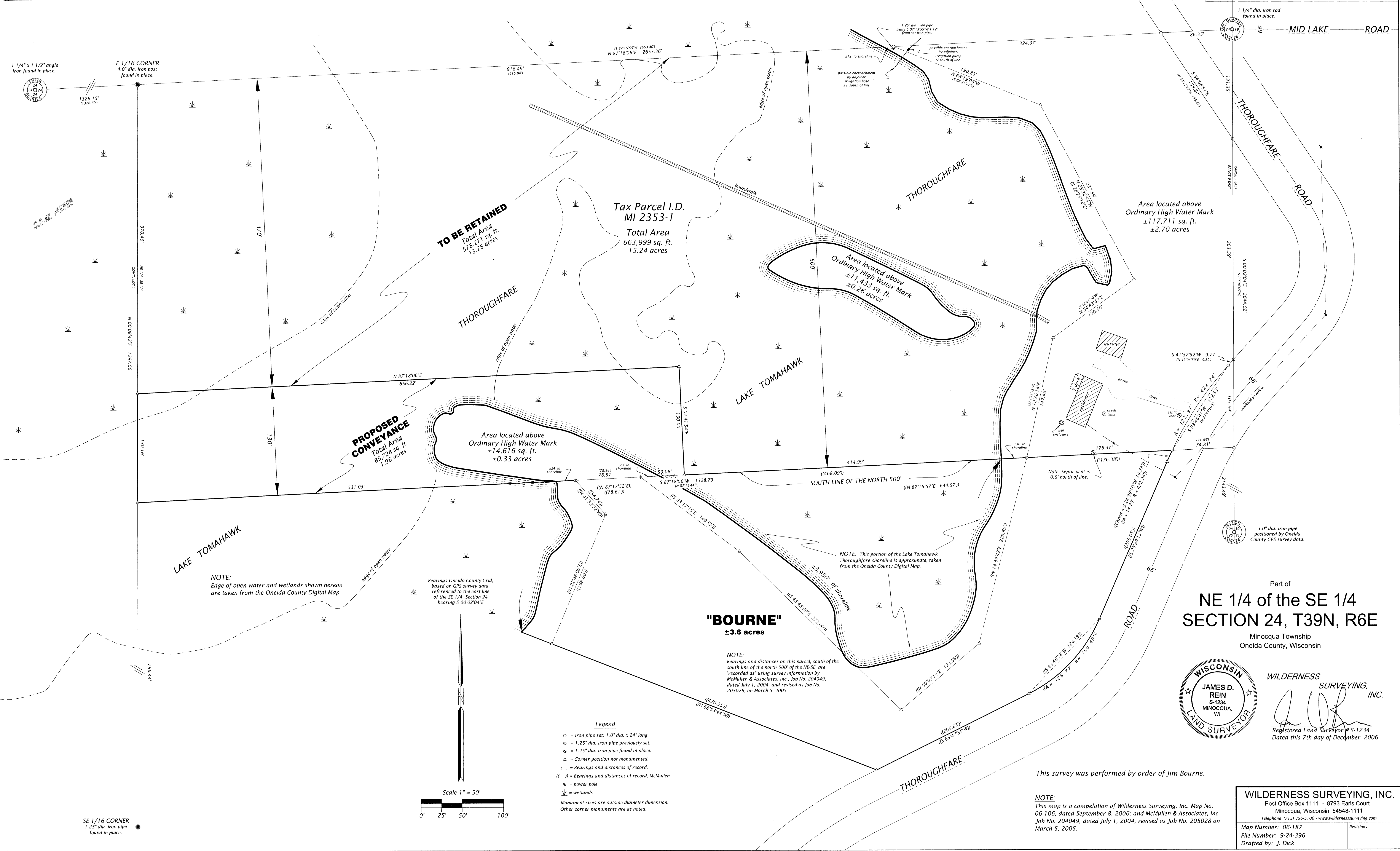


MAP # **03349**  
 DATE FILED: DEC 21 2006  
 BY: [Signature]  
 DESCRIPTION FILED:  
 ONEIDA CO. SURVEYOR'S OFFICE



Part of  
**NE 1/4 of the SE 1/4 SECTION 24, T39N, R6E**  
 Minocqua Township  
 Oneida County, Wisconsin

**WISCONSIN LAND SURVEYOR**  
**JAMES D. REIN**  
 S-1234  
 MINOCQUA, WI

**WILDERNESS SURVEYING, INC.**  
 Registered Land Surveyor # S-1234  
 Dated this 7th day of December, 2006

**WILDERNESS SURVEYING, INC.**  
 Post Office Box 1111 - 8793 Earls Court  
 Minocqua, Wisconsin 54548-1111  
 Telephone (715) 356-5100 - www.wildernesssurveying.com

Map Number: 06-187  
 File Number: 9-24-396  
 Drafted by: J. Dick