

WILDWOOD DRIVE - Minocqua Town Board Resolution, September 6, 2005

A strip of land fifty (50) feet in width for the right of way of Wildwood Drive, a town road, being located in Government Lot 6 and Government Lot 7, Section 13, Township 39 North, Range 5 East, Minocqua Township, Oneida County, Wisconsin, shown on Map No. 04-189ROW by Wilderness Surveying, Inc., dated December 15, 2006, the centerline of which is more particularly described as follows:

Commencing at the southeast corner of Section 13, marked by a capped aluminum monument, thence North 53 degrees 10 minutes 33 seconds West (Oneida County Grid bearing) for a distance of 646.47 feet to the place of beginning, designated point "A".

Thence along said centerline South 18 degrees 40 minutes 15 seconds West for a distance of 112 feet more or less to the northerly right of way line of Mercer Lake Road and there terminating.

Thence again from the place of beginning, designated point "A", along said centerline South 08 degrees 30 minutes 01 seconds East for a distance of 54.75 feet to a point, thence South 68 degrees 21 minutes 12 seconds East for a distance of 31 feet more or less to the northerly right of way line of Mercer Lake Road and there terminating

Thence again from the place of beginning, designated point "A", along said centerline North 11 degrees 00 minutes 47 seconds East for a distance of 60.52 feet to a point; thence along a curve to the right, having a radius of 100.00 feet and an arc length of 65.37 feet, being subtended by a chord of North 29 degrees 44 minutes 22 seconds East for a distance of 64.21 feet to a point; thence North 48 degrees 27 minutes 57 seconds East for a distance of 71.21 feet to a point, thence along a curve to the left, having a radius of 130.00 feet and an arc length of 113.22 feet, being subtended by a chord of North 23 degrees 30 minutes 56 seconds East for a distance of 109.68 feet to a point; thence North 01 degrees 26 minutes 05 seconds West for a distance of 53.65 feet to a point; thence along a curve to the right, having a radius of 150.00 feet and an arc length of 34.82 feet, being subtended by a chord of North 05 degrees 12 minutes 57 seconds East for a distance of 34.74 feet to a point; thence North 11 degrees 51 minutes 59 seconds East for a distance of 152.95 feet to a point, thence along a curve to the left, having a radius of 170.00 feet and an arc length of 150.18 feet, being subtended by a chord of North 13 degrees 26 minutes 30 seconds West for a distance of 145.34 feet to a point; thence North 38 degrees 44 minutes 59 seconds West for a distance of 305.54 feet to a point; thence along a curve to the left, having a radius of 140.00 feet and an arc length of 156.71 feet, being subtended by a chord of North 70 degrees 49 minutes 04 seconds West for a distance of 148.66 feet to a point; thence along a curve to the right, having a radius of 1031.34 feet and an arc length of 136.03 feet, being subtended by a chord of South 80 degrees 53 minutes 33 seconds West for a distance of 135.93 feet to a point; thence along a curve to the left, having a radius of 322.12 feet and an arc length of 110.76 feet, being subtended by a chord of South 74 degrees 49 minutes 13 seconds West for a distance of 110.22 feet to a point; thence South 64 degrees 58 minutes 10 seconds West for a distance of 47.46 feet to a point; thence along a curve to the right, having a radius of 135.00 feet and an arc length of 113.25 feet, being subtended by a chord of South 89 degrees 00 minutes 09 seconds West for a distance of 109.96 feet to a point; thence North 66 degrees 57 minutes 52 seconds West for a distance of 65.54 feet to a point; thence along a curve to the left, having a radius of 70.00 feet and an arc length of 99.24 feet, being subtended by a chord of South 72 degrees 25 minutes 18 seconds West for a distance of 84.54 feet to a point; thence along a curve to the right, having a radius of 95.00 feet and an arc length of 139.33 feet, being subtended by a chord of South 73 degrees 49 minutes 25 seconds West for a distance of 127.17 feet to a point; thence North 64 degrees 09 minutes 40 seconds West for a distance of 94.19 feet to a point; thence along a curve to the left, having a radius of 100.00 feet and an arc length of 131.59 feet, being subtended by a chord of South 78 degrees 08 minutes 25 seconds West for a distance of 122.30 feet to a point; thence along a curve to the left, having a radius of 1639.59 feet and an arc length of 343.02 feet, being subtended by a chord of South 34 degrees 26 minutes 53 seconds West for a distance of 342.40 feet to a point; thence South 28 degrees 27 minutes 16 seconds West for a distance of 220 feet more or less to the southwesterly line of that parcel of land recorded in Volume 463 of Records, on page 543 and there terminating

WILDWOOD DRIVE

A town road in part of

GOV'T. LOT 6

and

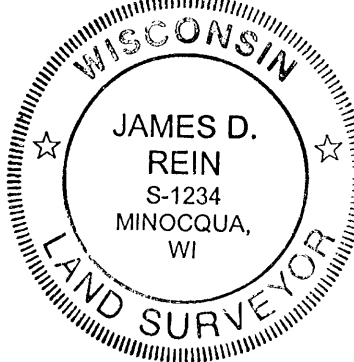
GOV'T. LOT 7

SECTION 13, T39N, R5E

Minocqua Township
Oneida County, Wisconsin

SURVEYOR'S CERTIFICATE

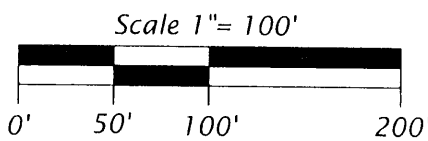
I, James D. Rein, Registered Land Surveyor No. S-1234, hereby certify that I have surveyed the property shown hereon, that this map represents an accurate survey of said property to the best of my knowledge and belief; that I have performed this survey by order of William Norman for the Town of Minocqua; and that I have complied with the requirements of Wisconsin Administrative Code A-E 7.



WILDERNESS
SURVEYING,
INC.

[Signature]
Registered Land Surveyor # S-1234
Dated this 15th day of December, 2006.

Bearings Oneida County Grid,
based on GPS survey data, and
referenced to the west line of
Gov't. Lot 7, bearing
N 00°29'01"W



LEGEND

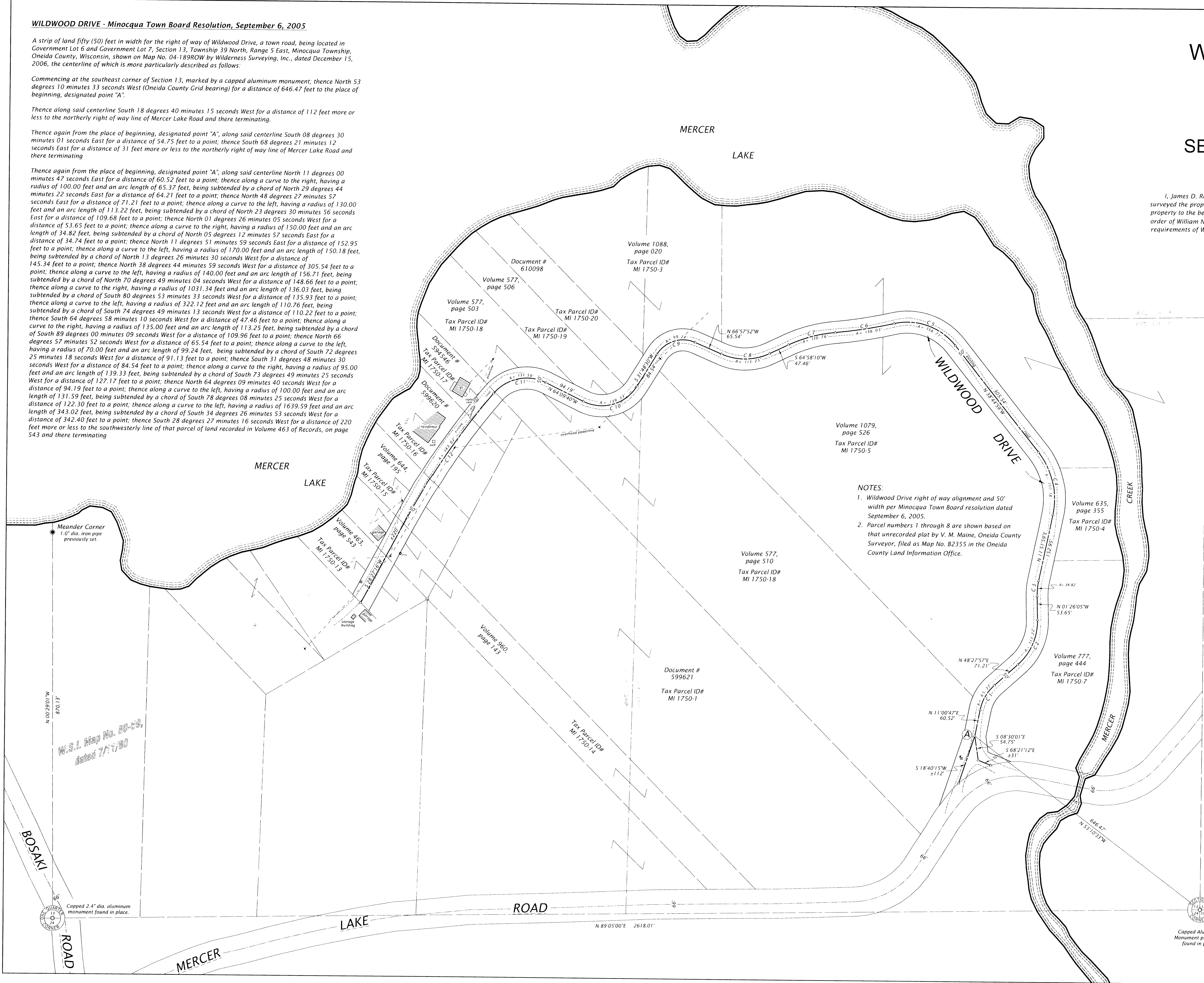
- △ = Computed position not monumented.
- * = power pole
- ⊕ = telephone pedestal

WILDWOOD DRIVE CENTERLINE
CURVE DATA TABLE

Curve	Radius	Tangent	Length	Delta	Chord	Chord Bearings
C1	100.00'	33.90'	65.37'	37°27'10"	64.21'	N 29°44'22" E
C2	130.00'	60.48'	113.22'	49°54'02"	109.68'	N 23°30'56" E
C3	150.00'	17.49'	34.82'	13°18'04"	34.74'	N 05°12'57" E
C4	170.00'	80.39'	150.18'	50°36'58"	145.34'	N 13°26'30" W
C5	140.00'	87.71'	156.71'	64°08'10"	148.66'	N 70°49'04" W
C6	1031.34'	68.11'	136.03'	73°32'44"	135.93'	S 80°53'33" W
C7	322.12'	55.93'	110.76'	19°42'06"	110.22'	S 74°49'11" W
C8	135.00'	60.20'	113.25'	48°03'58"	109.96'	S 89°00'09" W
C9	70.00'	60.03'	99.24'	81°13'38"	91.13'	S 72°25'18" W
C10	95.00'	85.58'	139.33'	84°01'50"	122.17'	S 73°49'25" W
C11	100.00'	77.28'	131.59'	75°23'50"	122.30'	S 78°08'55" W
C12	1639.59'	172.14'	343.02'	11°59'14"	342.40'	S 34°26'53" W

NOTES:

- Wildwood Drive right of way alignment and 50' width per Minocqua Town Board resolution dated September 6, 2005.
- Parcel numbers 1 through 8 are shown based on that unrecorded plat by V. M. Maine, Oneida County Surveyor, filed as Map No. B2355 in the Oneida County Land Information Office.



Capped Aluminum
Monument previously
found in place.

WILDERNESS SURVEYING, INC.
Post Office Box 1111 - 8793 Earls Court
Minocqua, Wisconsin 54548-1111
Telephone (715) 356-5100 - www.wildernesssurveying.com

Map Number: 04-189ROW
File Number: 15 & 16-13-395
Drafted by: J. Dick

Revisions: