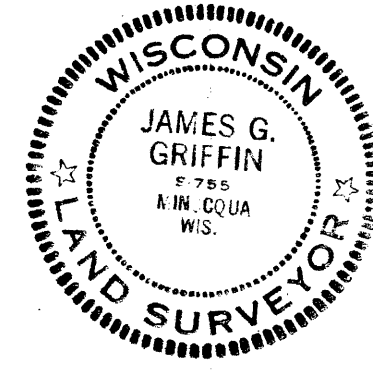


Part of SECTION 32, T 36N, R 7E Oneida County, Wis.

Scale 1"=60'

November, 1963 Revised: May, 1964



Northwoods Surveyors

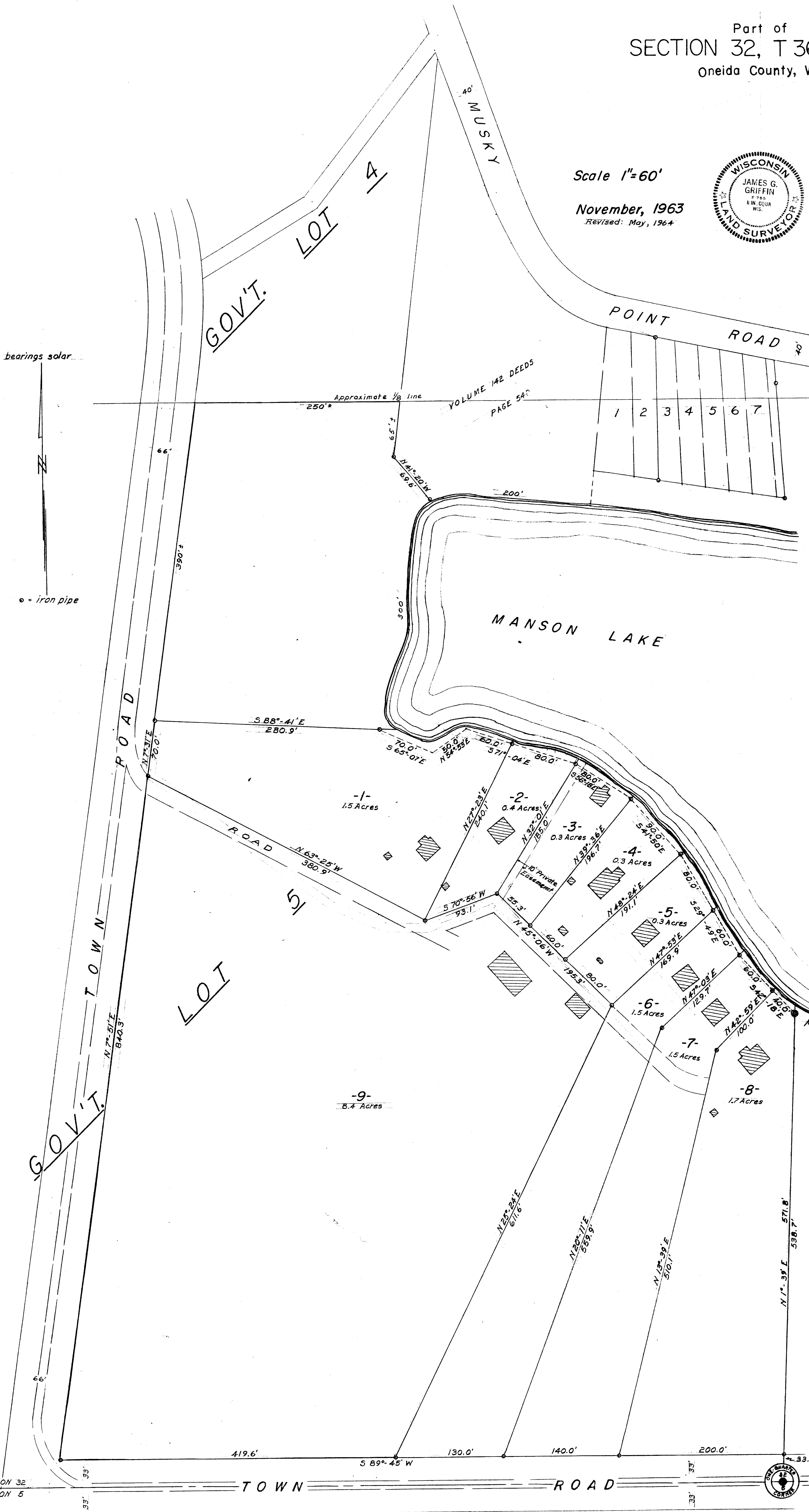
James G. Griffin Land Surveyor

bearings solar

o = iron pipe

2DE-CB-87

SECTION 32 SECTION 5



Meander Corner
7' W. Birch
11' 78" W, 19.5'
10' W. Birch
S 26° E, 19.7'

MAP # C2362
DATE FILED 3-1-07
BY: Jw
DESCRIPTION: 11/11
ONEIDA CO. SURVEYOR'S OFFICE