

MAP 16,2493
 BY SDK
 NOV 28 2007
 OFFICIAL TO SURVEYOR & CUMPLER

DOLHUN'S RESORT

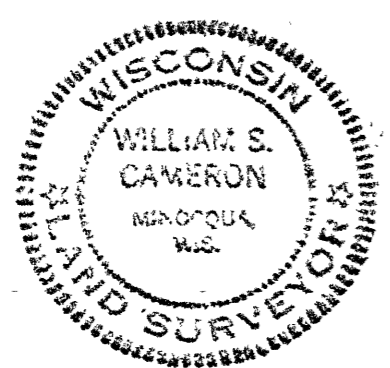
Part of
SECTION 33
T39 N. R7 E.
 Oneida County, Wis.

Scale 1" = 150'

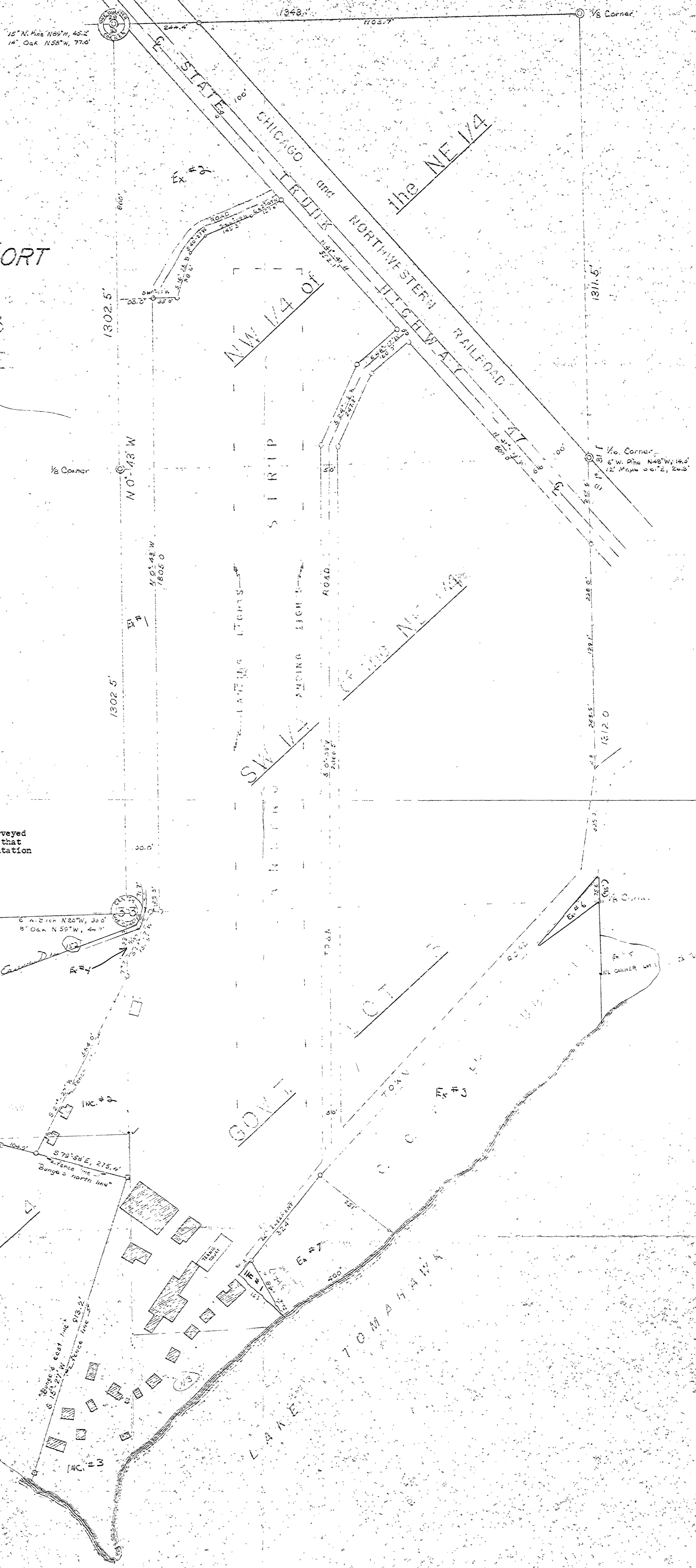
April, 1901

Northwoods Surveyors

Reg. Surveyor
 No. 5-112



We hereby certify that we have surveyed the lands as indicated on this map and that said map is a true and correct representation of the lands so surveyed by us.
 NORTHWOODS SURVEYORS



○ • iron pipe
 □ • concrete monument

Dolhun

2-33-397

8843