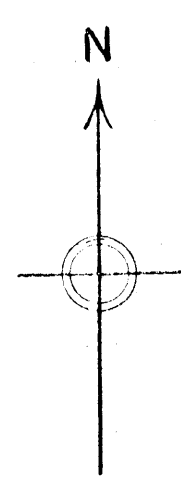


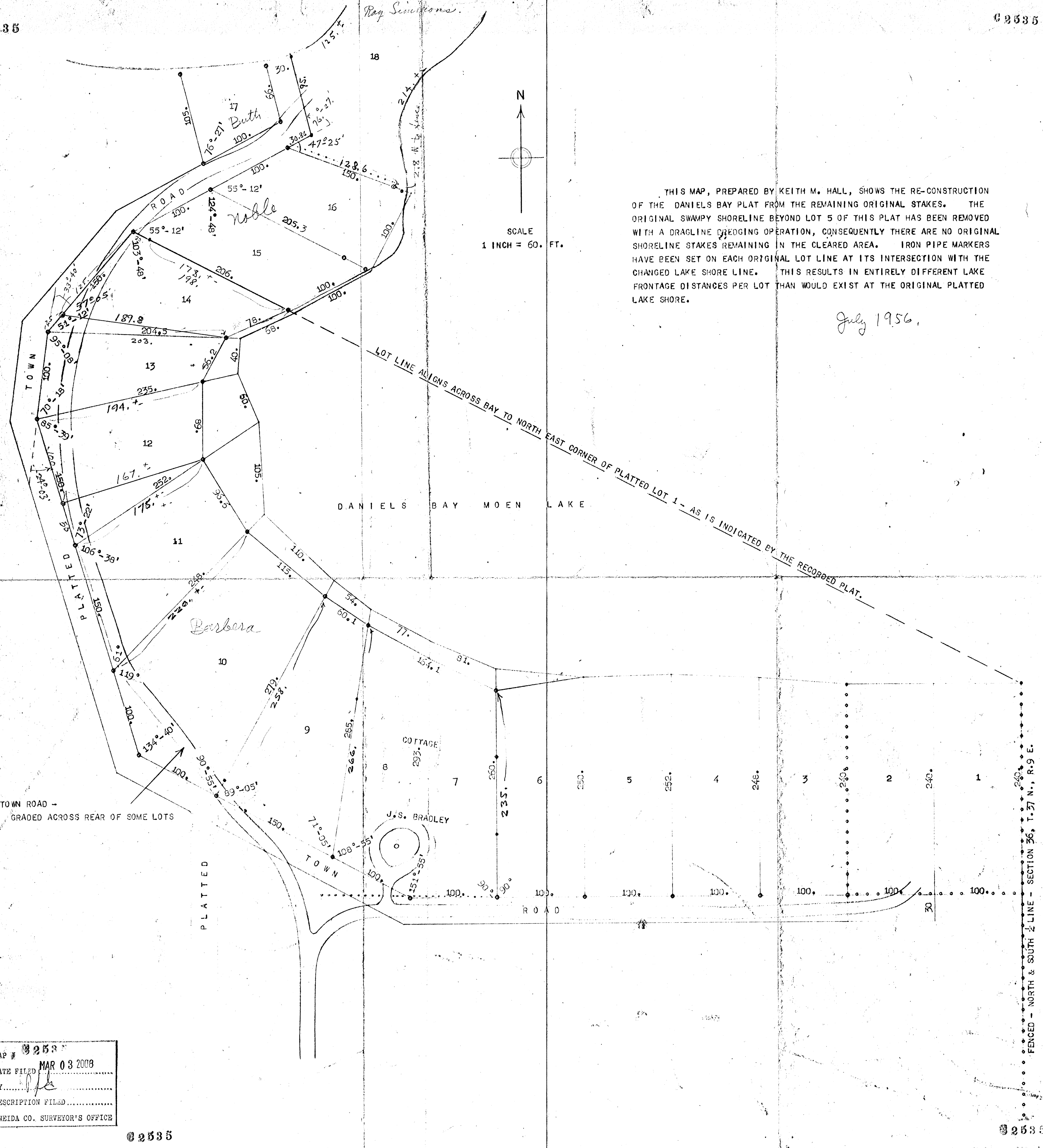
Ray Simmons.



SCALE  
1 INCH = 60. FT.

THIS MAP, PREPARED BY KEITH M. HALL, SHOWS THE RE-CONSTRUCTION OF THE DANIELS BAY PLAT FROM THE REMAINING ORIGINAL STAKES. THE ORIGINAL SWAMPY SHORELINE BEYOND LOT 5 OF THIS PLAT HAS BEEN REMOVED WITH A DRAGLINE DREDGING OPERATION, CONSEQUENTLY THERE ARE NO ORIGINAL SHORELINE STAKES REMAINING IN THE CLEARED AREA. IRON PIPE MARKERS HAVE BEEN SET ON EACH ORIGINAL LOT LINE AT ITS INTERSECTION WITH THE CHANGED LAKE SHORE LINE. THIS RESULTS IN ENTIRELY DIFFERENT LAKE FRONTAGE DISTANCES PER LOT THAN WOULD EXIST AT THE ORIGINAL PLATTED LAKE SHORE.

July 1956.



MAP # **02535**  
DATE FILED **MAR 03 2008**  
BY.....  
DESCRIPTION FILED.....  
ONEIDA CO. SURVEYOR'S OFFICE