

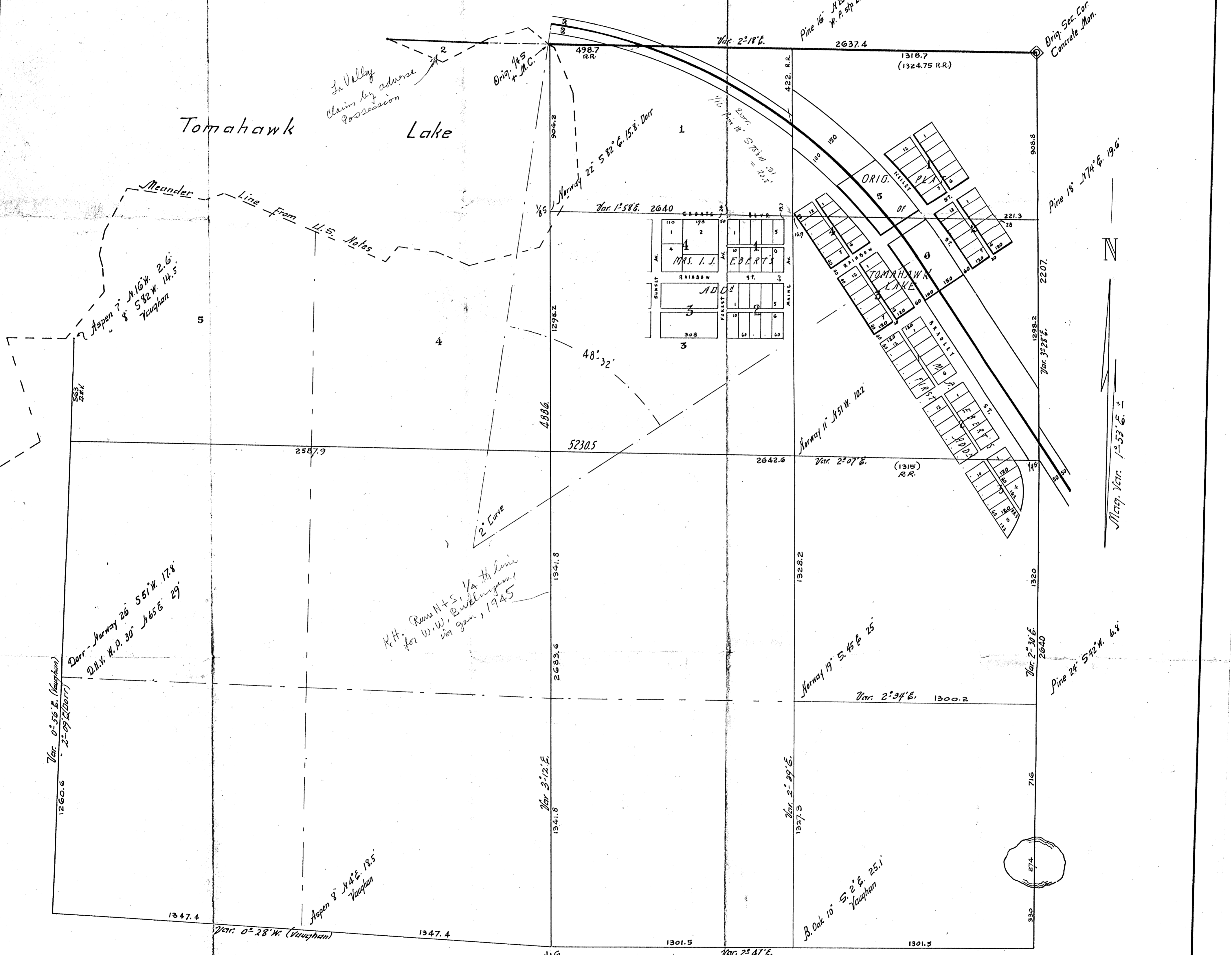
MAP # 02640  
 DATE FILED MAR 19 2008  
 BY: [Signature]  
 DESCRIPTION FILED  
 ONEIDA CO. SURVEYOR'S OFFICE

Sec. 3 Tp. 38 N. R. 7 E.

Oneida County, Wis.  
 Scale 300' = 1"

Platted from information available:  
 Sec. 14 & 18 lines from notes of B.F. Dorr & D.H. Vaughan  
 Orig. Plat & Eberts' Additions from the Recorded Plats  
 Shore line from U.S. Meander Notes  
 Railway location from C. & NW. map

Did Dorr & Vaughan use D.H. Vaughan's 1/6 S. in 1884 D.H.V. 8/52  
 { M.P. sfp 18" S 2 1/2 E .39 = 25.7  
 " " 18" S 87 W .53 = 35.  
 -> W x Angl. Plat should bear 135° 02' E 14.85 approx.



Note - Dorr (in 1892-3) had all the orig. corners around this section except the 1/4 S and M.C. on west line.

Compiled and drawn by Roy H. Hall, Dep. County Surveyor - Feb. 1933