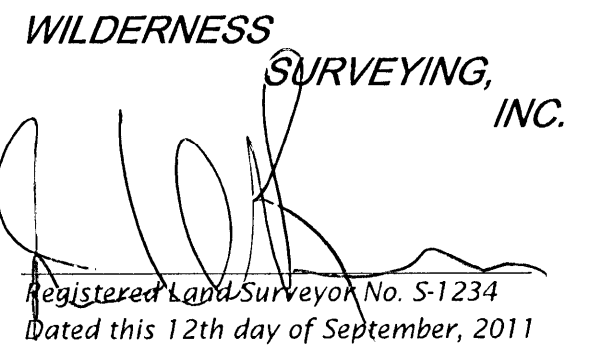


Town of Crescent,
Oneida County, Wisconsin

SURVEYOR'S CERTIFICATE

I, James D. Rein, Registered Land Surveyor No. S-1234, hereby certify that I have surveyed the property shown hereon; that this map represents an accurate survey of said property to the best of my knowledge and belief; that I have performed this survey by order of Keith Kost, Attorney; and that I have complied with the requirements of Wisconsin Administrative Code AT 10.70.



Course	Bearing	Distance
L1	S 1452°50'W	131.92'
L2	S 01°20'27"E	366.53'
L3	S 15°15'00"E	331.92'
L4	S 09°18'45"E	252.53'
L5	S 47°40'59"E	162.76'
L6	S 57°34'42"E	158.93'
L7	S 58°40'00"E	170.08'
L8	S 73°48'39"E	346.08'
L9	S 84°09'10"E	246.36'
L10	N 78°51'15"E	170.91'
L11	N 60°42'47"E	205.99'
L12	S 86°37'01"E	145.68'
L13	N 78°00'77"E	272.13'
L14	S 39°15'00"E	57.50'
L15	S 51°18'13"E	314.30'
L16	S 56°47'52"E	367.51'
L17	S 78°15'00"E	410.42'
L18	S 56°42'10"E	171.35'
L19	S 18°00'39"E	143.58'
L20	S 242°25'00"E	17.14'
L21	S 43°48'08"E	191.65'
L22	S 43°48'08"E	103.62'
L23	S 32°03'21"E	521.86'
L24	S 51°28'24"E	494.42'
L25	S 48°20'51"E	406.81'
L26	S 311°75'72"E	120.42'
L27	S 311°27'00"E	48.87'
L28	S 52°22'10"E	480.87'
L29	S 69°51'58"E	1040.81'
L30	S 69°51'58"E	33.64'
L31	S 88°03'00"E	159.68'

*Bearings Oneida County Grid,
based on GPS survey data,
referenced to west line
of the SW 1/4, Section 34,
bearing N 00°58'45"E*

LEGEND

- = Set iron pipe; 1.0" dia. x 24" long.
- Δ = Computed position, not monumented.
- () = Bearing and distance of record.
- ⚡ = power pole

Monument sizes are outside diameter dimension.
Other corner monuments are as noted.

NOTE: Boundary corner monuments shown as "Set" will be placed after the fall crop harvest 2011

Scale: 1" = 300'

A horizontal scale bar with alternating black and white segments. The segments are labeled 0', 150', 300', and 600' from left to right. The bar is divided into four equal segments, each representing 150 feet.

TOTAL AREA: ±295.87 acres

NOTE: The 100 yr. flood elevation line shown here on is based on a hydrology study performed by John P. Griffin, P.E., Chequamegon Bay Engineering, September 2001.

NOTE: Benchmark = USGS: BM 41 SAN 1964;
Point ID SC6170
Elevation = 487.691 meters NGVD 29
(W.S.I. Elev. = 1600.033')

SITE -4- TOTAL (Map No. 11-09_site4)

A parcel of land, being the Southeast Quarter of the Northwest Quarter, the Northeast Quarter of the Southwest Quarter, the Northwest Quarter of the Southeast Quarter, Government Lots 4, 5, 6 and 7, and part of Government Lot 3, Section 34, and also Government Lot 2, Section 35, Township 36 North, Range 8 East, Town of Crescent, Oneida County, Wisconsin, shown on Map No. 11-09, sited, by Wilderness Surveying, Inc., dated September 12, 2011, more particularly described as follows:

Commencing at the southwest corner of Section 34, marked by a square granite monument; thence South 89 degrees 29 minutes 34 seconds East for a distance of 1305.98 feet along the south line of Section 34 to the place of beginning, being the West Sixteenth Corner, marked by an aluminum capped iron pipe.

The North DD degrees 43 minutes 11 seconds East for a distance of 131.83 feet along the west lone of Government Lot 7 to the Southwest Sixteenth Corner, marked by an aluminum capped iron pipe; thence continuing North DD degrees 43 minutes 11 seconds East for a distance of 1316.79 feet along the west line of the Northeast Quarter of the Southwest Quarter to the Center-North Sixteenth Corner, marked by an aluminum capped iron pipe; thence North DD degrees 05 minutes 07 seconds West for a distance of 1309.31 feet along the west line of the Northeast Quarter of the Southwest Quarter to the South Corner of Section 34; or therefrom South 14 degrees 52 minutes 05 seconds East for a distance of 1276.41 feet along the west line of Government Lot 3 to an iron pin at an intersection with the southerly right-of-way line of Hat Rapids Road, as established by Wisconsin Department of Transportation Project No. 3867-01; from said point, thence South 89 degrees 57 minutes 47 seconds East for a distance of 178.87 feet to an iron pipe; thence continuing along said southerly right-of-way line, South 82 degrees 50 minutes 17 seconds East for a distance of 201.56 feet to an iron pipe; thence continuing along said southerly right-of-way line, North 48 degrees 30 minutes 24 seconds East for a distance of 101.12 feet to an iron pipe; thence continuing along said southerly right-of-way line 89 degrees 59 minutes 49 seconds East for a distance of 214.64 feet to an iron pin at the bank of Hat Rapids Road; or therefrom South 14 degrees 52 minutes 05 seconds West for a distance of 131.92 feet, North 01 degrees 20 minutes 27 seconds East for a distance of 366.53 feet, South 15 degrees 36 minutes 10 seconds East for a distance of 351.32 feet, South 29 degrees 48 minutes 25 seconds East for a distance of 252.53 feet, South 47 degrees 40 minutes 59 seconds East for a distance of 163.76 feet, South 57 degrees 34 minutes 42 seconds East for a distance of 139.93 feet to the line common to Government Lot 3 and the Southeast Quarter of the Northeast Quarter of Section 34; or therefrom North 48 degrees 30 minutes 24 seconds East for a distance of 101.12 feet to an iron pin at the bank of Hat Rapids Road; or therefrom North 48 degrees 30 minutes 24 seconds East for a distance of 348.08 feet, North 84 degrees 09 minutes 10 seconds East for a distance of 246.36 feet, North 78 degrees 45 minutes 15 seconds East for a distance of 168.91 feet, North 60 degrees 42 minutes 47 seconds East for a distance of 205.93 feet, South 86 degrees 37 minutes 01 seconds East for a distance of 145.68 feet, North 78 degrees 45 minutes 15 seconds East for a distance of 101.12 feet to an iron pin at the bank of Hat Rapids Road; or therefrom North 48 degrees 30 minutes 24 seconds East for a distance of 168.91 feet, North 84 degrees 09 minutes 10 seconds East for a distance of 246.36 feet, North 78 degrees 45 minutes 15 seconds East for a distance of 168.91 feet, North 60 degrees 42 minutes 47 seconds East for a distance of 205.93 feet, South 86 degrees 37 minutes 01 seconds East for a distance of 145.68 feet, North 78 degrees 45 minutes 15 seconds East for a distance of 101.12 feet to an iron pin at the bank of Hat Rapids Road; or therefrom North 48 degrees 18 minutes 28 seconds East for a distance of 518.60 feet, South 51 degrees 18 minutes 13 seconds East for a distance of 414.30 feet, South 56 degrees 47 minutes 32 seconds East for a distance of 367.51 feet, South 78 degrees 18 minutes 45 seconds East for a distance of 369.93 feet to the line common to Section 34 and Section 35, South 56 degrees 42 minutes 47 seconds East for a distance of 113.02 feet to an iron pin at the bank of Hat Rapids Road; or therefrom North 48 degrees 18 minutes 28 seconds East for a distance of 517.18 feet, South 43 degrees 48 minutes 08 seconds West for a distance of 191.65 feet, South 43 degrees 48 minutes 08 seconds West for a distance of 1032.62 feet to the line common to Section 34 and Section 35, South 32 degrees 03 minutes 29 seconds West for a distance of 521.83 feet, South 51 degrees 29 minutes 22 seconds West for a distance of 459.42 feet, South 48 degrees 20 minutes 01 seconds West for a distance of 406.16 feet, South 31 degrees 17 minutes 52 seconds West for a distance of 120.42 feet to the line common to Section 34 and Section 35, and therefrom North 48 degrees 18 minutes 28 seconds East for a distance of 1040.81 feet to the line common to Government Lot 6 and Government Lot 7, South 69 degrees 15 minutes 18 seconds West for a distance of 373.61 feet, and South 48 degrees 02 minutes 33 seconds West for a distance of 159.68 feet to the Meander Corner where the south line of Section 34 intersects the meander line, marked by a cast aluminum monument; thence North 89 degrees 29 minutes 34 seconds West for a distance of 839.74 feet along the south line of Section 34 to the place of beginning.

The northerly lateral lot line, being the southerly right of way of Hat Rapids Road; and the southerly lateral lot line, being the south line of Section 34, which bears South 89 degrees 30 minutes 08 seconds East from the above described Meander Corner where the south line of Section 34 intersects the westerly bank of the Wisconsin River; both extend to the westerly bank of the Wisconsin River, and includes all those lands lying between the meander line and the ordinary high water mark.

Together with and subject to covenants, easements,
Said property contains 295.87 acres, more or less.

WILDERNESS SURVEYING, INC.

Post Office Box 1111 - 8793 Earls Court
Minocqua, Wisconsin 54548-1111

Telephone (715) 356-5100 - www.wildernesssurveying.com

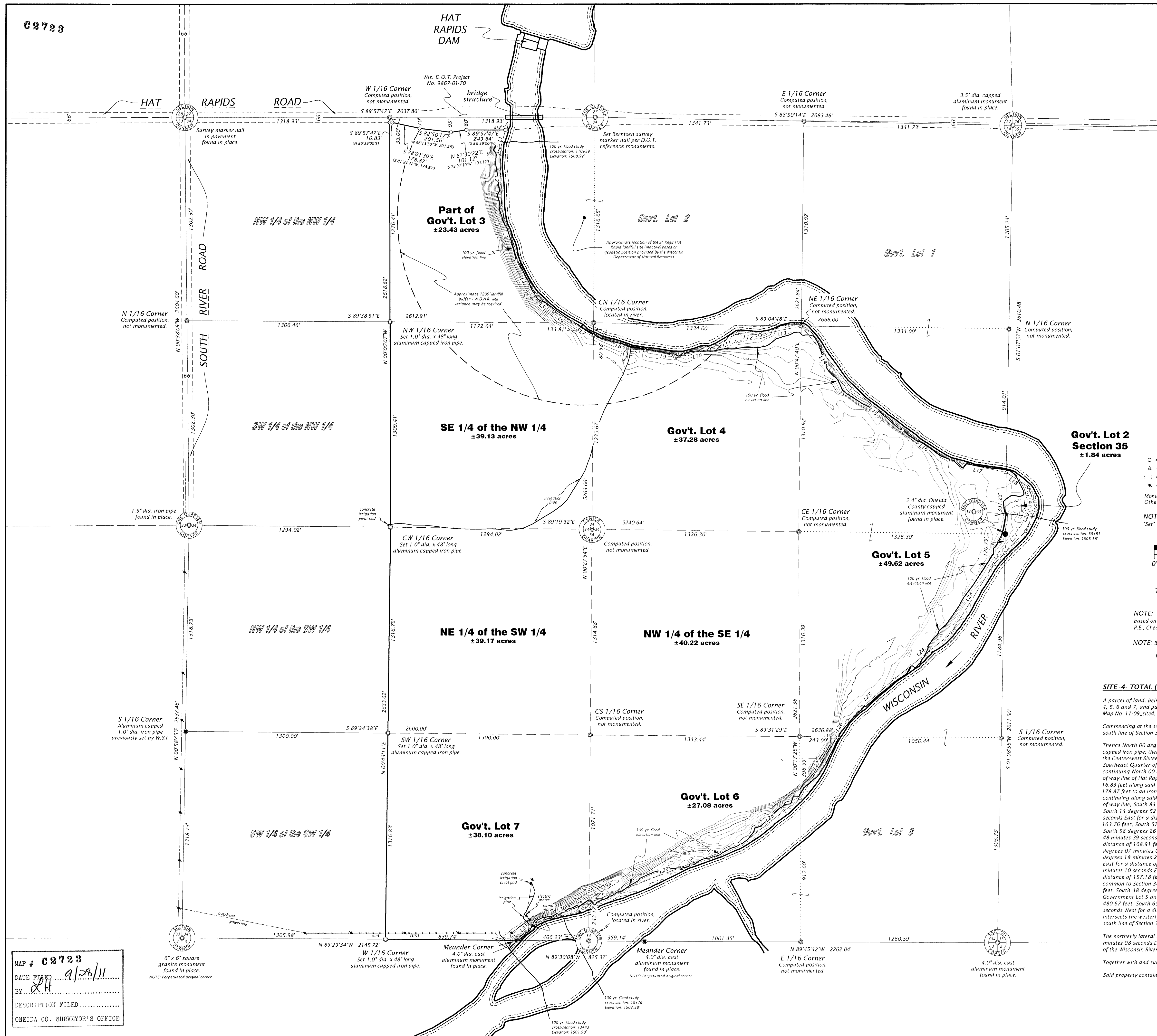
Map Number: 11-09 site4

File Number: 34 & 35-368

Drafted by: I. Dick

— 100 —

2723



MAP # **C2723**
DATE FILED 9/28/11
BY LA
DESCRIPTION FILED
ONEIDA CO. SURVEYOR'S OFFICE