

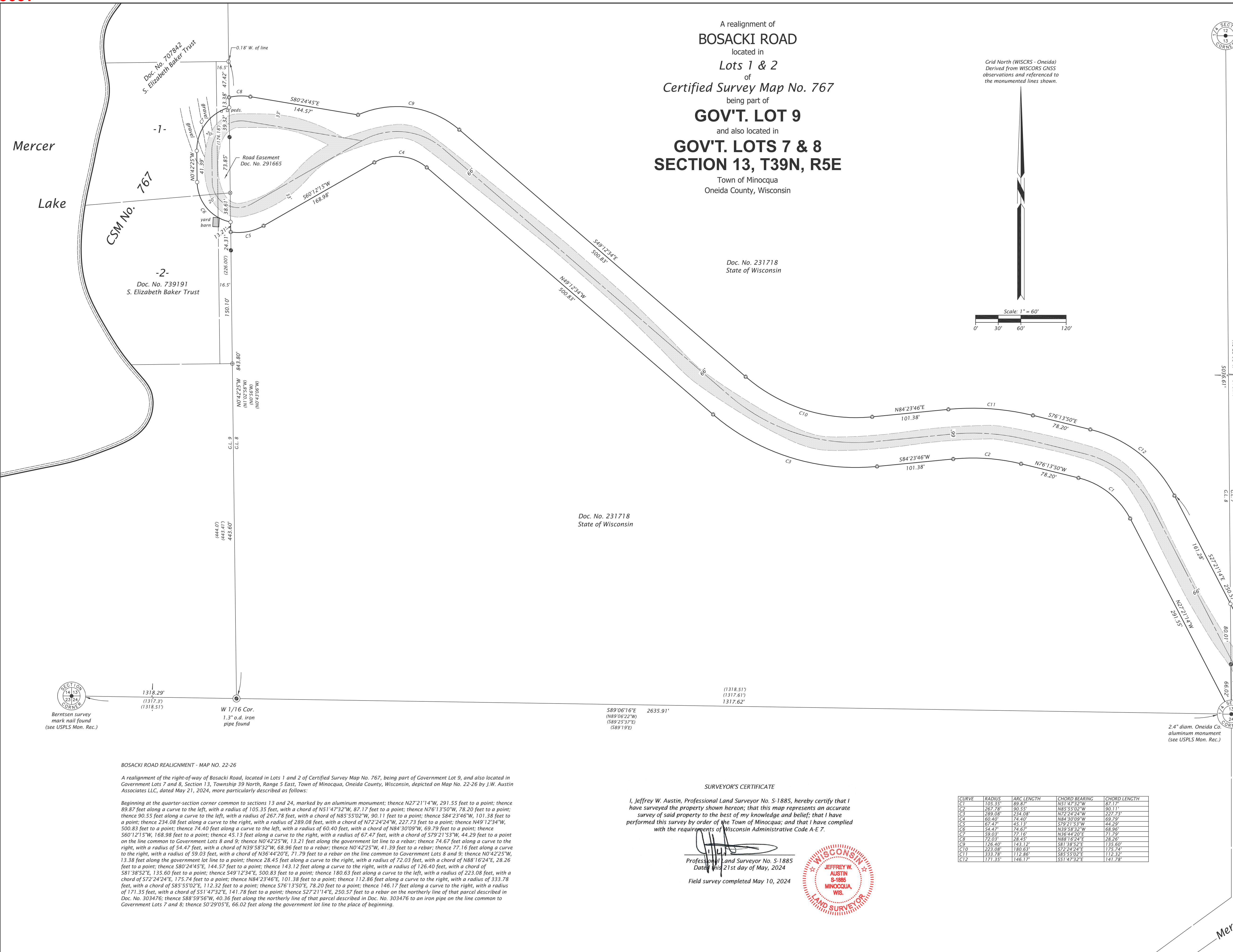
A realignment of
BOSACKI ROAD
 located in
 Lots 1 & 2
 of
Certified Survey Map No. 767
 being part of
GOV'T. LOT 9
 and also located in
GOV'T. LOTS 7 & 8
SECTION 13, T39N, R5E
 Town of Minocqua
 Oneida County, Wisconsin

Doc. No. 231718
 State of Wisconsin

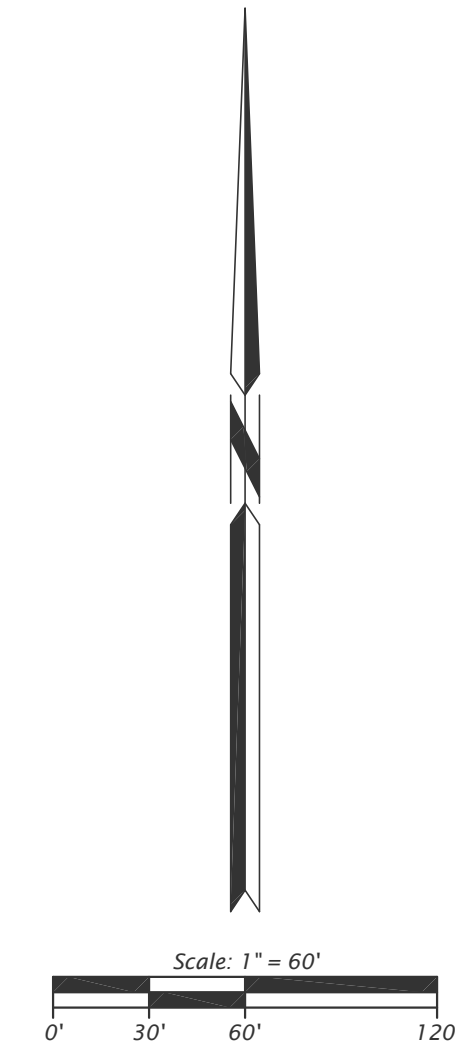
Doc. No. 231718
 State of Wisconsin

MAP # **C3097**
 DATE FILED: **10-29-2024**
 BY: **CH**
 DESCRIPTION FILED:
ONEIDA CO. SURVEYOR'S OFFICE

Mercer
 Lake



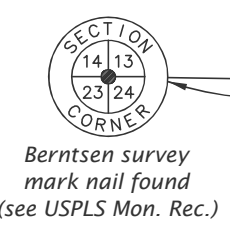
Grid North (WISCRS - Oneida)
 Derived from WISCRS GNSS
 observations and referenced to
 the monumented lines shown.



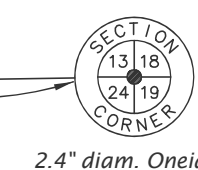
- LEGEND
- = 1.0" o.d. iron pipe found
 - ⊕ = 1.3" o.d. iron pipe found
 - ⊗ = 2.4" diam. brass capped iron pipe found
 - ⊙ = 2.0" o.d. iron pipe found
 - ⊖ = #6 rebar, 24" long with cap set
 - ⊕ = computed point, no monument
 - () = measurement of record
- All USPLS Monument Records verified

Doc. No. 307593
 Kenneth & Patricia Miely

Doc. No. 303476
 Town of Minocqua



Berntsen survey
 mark nail found
 (see USPLS Mon. Rec.)



2.4" diam. Oneida Co.
 aluminum monument
 (see USPLS Mon. Rec.)

BOSACKI ROAD REALIGNMENT - MAP NO. 22-26

A realignment of the right-of-way of Bosacki Road, located in Lots 1 and 2 of Certified Survey Map No. 767, being part of Government Lot 9, and also located in Government Lots 7 and 8, Section 13, Township 39 North, Range 5 East, Town of Minocqua, Oneida County, Wisconsin, depicted on Map No. 22-26 by J.W. Austin Associates LLC, dated May 21, 2024, more particularly described as follows:

Beginning at the quarter-section corner common to sections 13 and 24, marked by an aluminum monument; thence N27°21'14"W, 291.55 feet to a point; thence 89.87 feet along a curve to the left, with a radius of 105.35 feet, with a chord of N51°47'32"W, 87.17 feet to a point; thence N76°13'50"W, 78.20 feet to a point; thence 90.55 feet along a curve to the left, with a radius of 267.78 feet, with a chord of N85°55'02"W, 90.11 feet to a point; thence S84°23'46"W, 101.38 feet to a point; thence 234.08 feet along a curve to the right, with a radius of 289.08 feet, with a chord of N72°24'24"W, 227.73 feet to a point; thence N49°12'34"W, 500.83 feet to a point; thence 74.40 feet along a curve to the left, with a radius of 60.40 feet, with a chord of N84°30'09"W, 69.79 feet to a point; thence S60°12'15"W, 168.98 feet to a point; thence 45.13 feet along a curve to the right, with a radius of 67.47 feet, with a chord of S79°21'53"W, 44.29 feet to a point on the line common to Government Lots 8 and 9; thence N0°42'25"W, 13.21 feet along the government lot line to a rebar; thence 74.67 feet along a curve to the right, with a radius of 54.47 feet, with a chord of N39°58'32"W, 68.96 feet to a rebar; thence N0°42'25"W, 41.39 feet to a rebar; thence 77.16 feet along a curve to the right, with a radius of 59.03 feet, with a chord of N36°44'20"E, 71.79 feet to a rebar on the line common to Government Lots 8 and 9; thence N0°42'25"W, 13.38 feet along the government lot line to a point; thence 28.45 feet along a curve to the right, with a radius of 72.03 feet, with a chord of N88°16'24"E, 28.26 feet to a point; thence S80°24'45"E, 144.57 feet to a point; thence 143.12 feet along a curve to the right, with a radius of 126.40 feet, with a chord of S81°38'52"E, 135.60 feet to a point; thence S49°12'34"E, 500.83 feet to a point; thence 180.63 feet along a curve to the left, with a radius of 223.08 feet, with a chord of S72°24'24"E, 175.74 feet to a point; thence N84°23'46"E, 101.38 feet to a point; thence 112.86 feet along a curve to the right, with a radius of 333.78 feet, with a chord of S85°55'02"E, 112.32 feet to a point; thence S76°13'50"E, 78.20 feet to a point; thence 146.17 feet along a curve to the right, with a radius of 171.35 feet, with a chord of S51°47'32"E, 141.78 feet to a point; thence S27°21'14"E, 250.57 feet to a rebar on the northerly line of that parcel described in Doc. No. 303476; thence S88°59'56"W, 40.36 feet along the northerly line of that parcel described in Doc. No. 303476 to an iron pipe on the line common to Government Lots 7 and 8; thence S0°29'05"E, 66.02 feet along the government lot line to the place of beginning.

SURVEYOR'S CERTIFICATE

I, Jeffrey W. Austin, Professional Land Surveyor No. S-1885, hereby certify that I have surveyed the property shown herein; that this map represents an accurate survey of said property to the best of my knowledge and belief; that I have performed this survey by order of the Town of Minocqua; and that I have complied with the requirements of Wisconsin Administrative Code A-E 7.

Professional Land Surveyor No. S-1885
 Date of this 21st day of May, 2024

Field survey completed May 10, 2024



CURVE	RADIUS	ARC LENGTH	CHORD BEARING	CHORD LENGTH
C1	105.35	89.87'	N51°47'32"W	87.17'
C2	267.78	90.55'	N85°55'02"W	90.11'
C3	289.08	234.08'	N72°24'24"W	227.73'
C4	60.40	74.40'	N84°30'09"W	69.79'
C5	67.47	45.13'	S79°21'53"W	44.29'
C6	54.47	74.67'	N39°58'32"W	68.96'
C7	59.03	77.16'	N36°44'20"E	71.79'
C8	72.03	28.45'	N88°16'24"E	28.26'
C9	126.40	143.12'	S81°38'52"E	135.60'
C10	223.08	180.63'	S72°24'24"E	175.74'
C11	333.78	112.86'	S85°55'02"E	112.32'
C12	171.35	146.17'	S51°47'32"E	141.78'

JW Austin Associates
 Northwoods Land Surveyors
 10865 River Pine Rd., P.O. Box 111, Minocqua, Wisconsin 54548
 715-482-6506 - email: jeff@resurvey.org - web: www.survey.land