

C3142

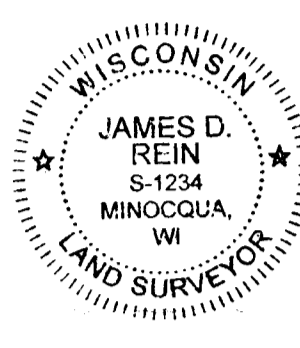
C3142

That Part of the  
**SW 1/4 of the SW 1/4**  
 lying East of Sutton Road  
 and the  
**SE 1/4 of the SW 1/4**  
**SW 1/4 of the SE 1/4**  
**SECTION 17**  
 and that part of the  
**NW 1/4 of the NW 1/4**  
**SW 1/4 of the NW 1/4**  
 lying East of Sutton Road  
 and the  
**NE 1/4 of the NW 1/4**  
**SE 1/4 of the NW 1/4**  
**NW 1/4 of the NE 1/4**  
**SW 1/4 of the NE 1/4**  
**SECTION 20**  
**T39N, R6E**  
 Town of Minocqua  
 Oneida County, Wisconsin

MAP # C3142  
 DATE FILED 4-13-2026  
 BY CH  
 DESCRIPTION FILED  
 ONEIDA CO. SURVEYOR'S OFFICE

**SURVEYOR'S CERTIFICATE**  
 I, James D. Rein, Professional Land Surveyor No. S-1234, hereby certify that I have surveyed the property shown hereon; that this map represents an accurate survey of said property to the best of my knowledge and belief; that I have performed this survey by order of Gerald Kozye; and that I have complied with the requirements of Wisconsin Administrative Code A-E 7.

**WILDERNESS SURVEYING, INC.**



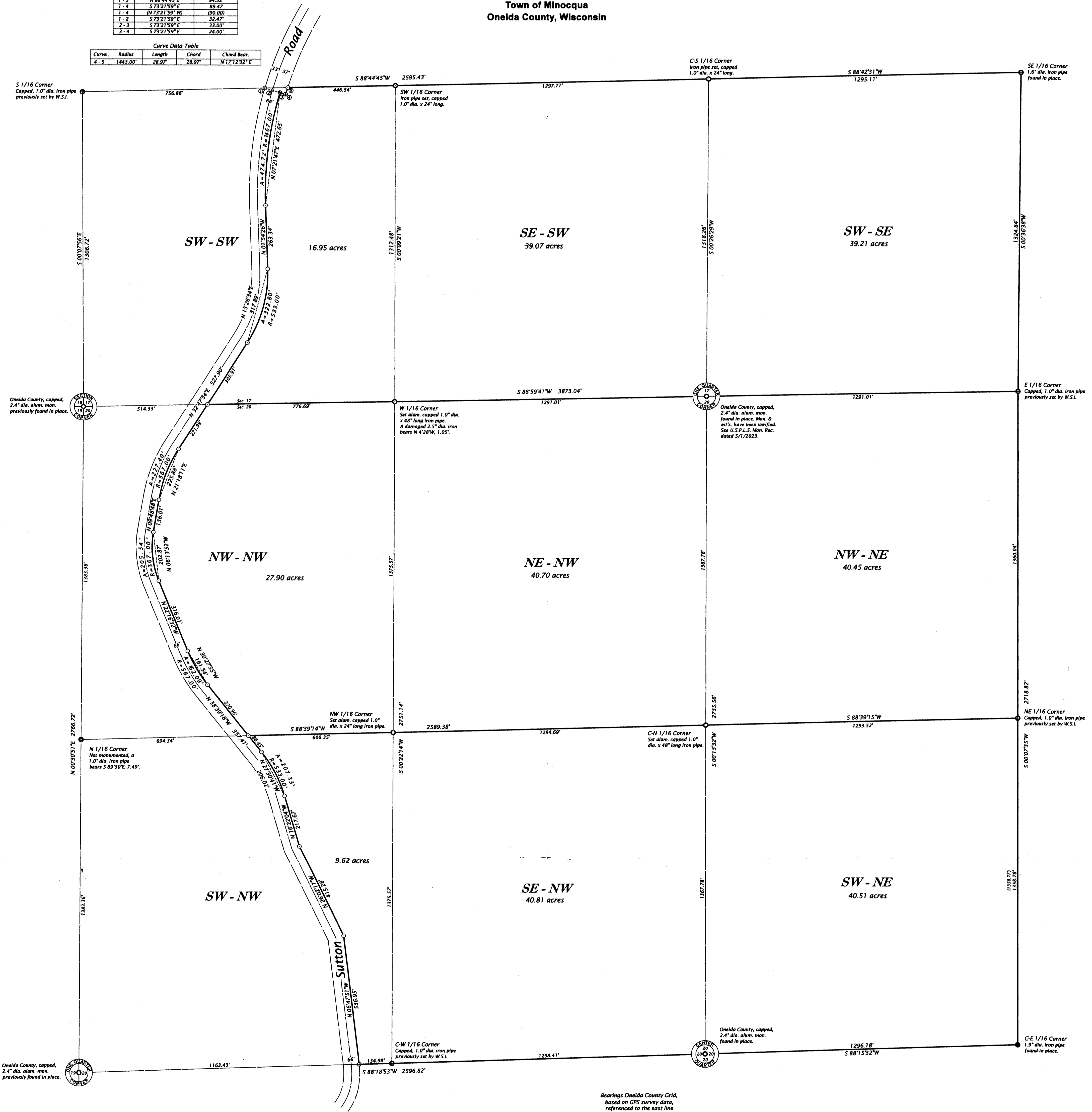
*James D. Rein*  
 Professional Land Surveyor No. S-1234  
 Dated this 3rd day of April, 2026  
 Field survey was completed on March 17, 2026.

**Line Data Table**

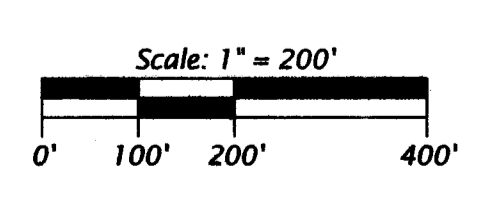
Course	Bearing	Distance
1-5	N 88°44'45"E	94.32'
1-4	S 73°21'59"E	89.47'
1-4	(N 73°21'59"W)	(90.00')
1-2	S 73°21'59"E	32.47'
2-3	S 73°21'59"E	33.00'
3-4	S 73°21'59"E	24.00'

**Curve Data Table**

Curve	Radius	Length	Chord	Chord Bear.
4-5	1443.00'	28.97'	28.97'	N 171°32'E



Bearings Oneida County Grid, based on GPS survey data, referenced to the east line of the NW 1/4, Section 20, bearing S 00°13'32"W.



**LEGEND**  
 ⊙ = 1.0" dia. iron pipe previously set by W.S.I.  
 ○ = iron pipe set, 1.0" dia. x 24" long  
 ⊕ = iron pipe set, 1.0" dia. x 18" long  
 △ = computed position, not monumented  
 ( ) = previously recorded bearing and distance  
 Monument sizes are outside diameter dimensions.  
 Other corner monuments are as noted.

**WILDERNESS SURVEYING, INC.**  
 Post Office Box 1111 - 8783 Earle Court  
 Minocqua, Wisconsin 54648-1111  
 Telephone: (715) 356-5100 - www.wildernesssurveying.com

Map Number: 25 - 89  
 File Number: 17 & 20 - 396  
 Drafted by: S. Wruk Silva

C3142

C3142