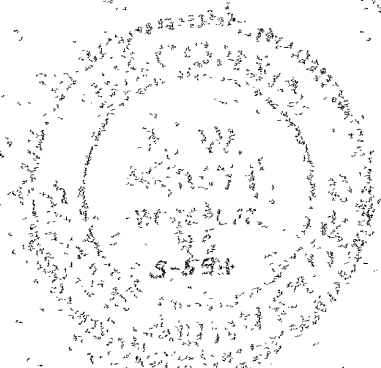
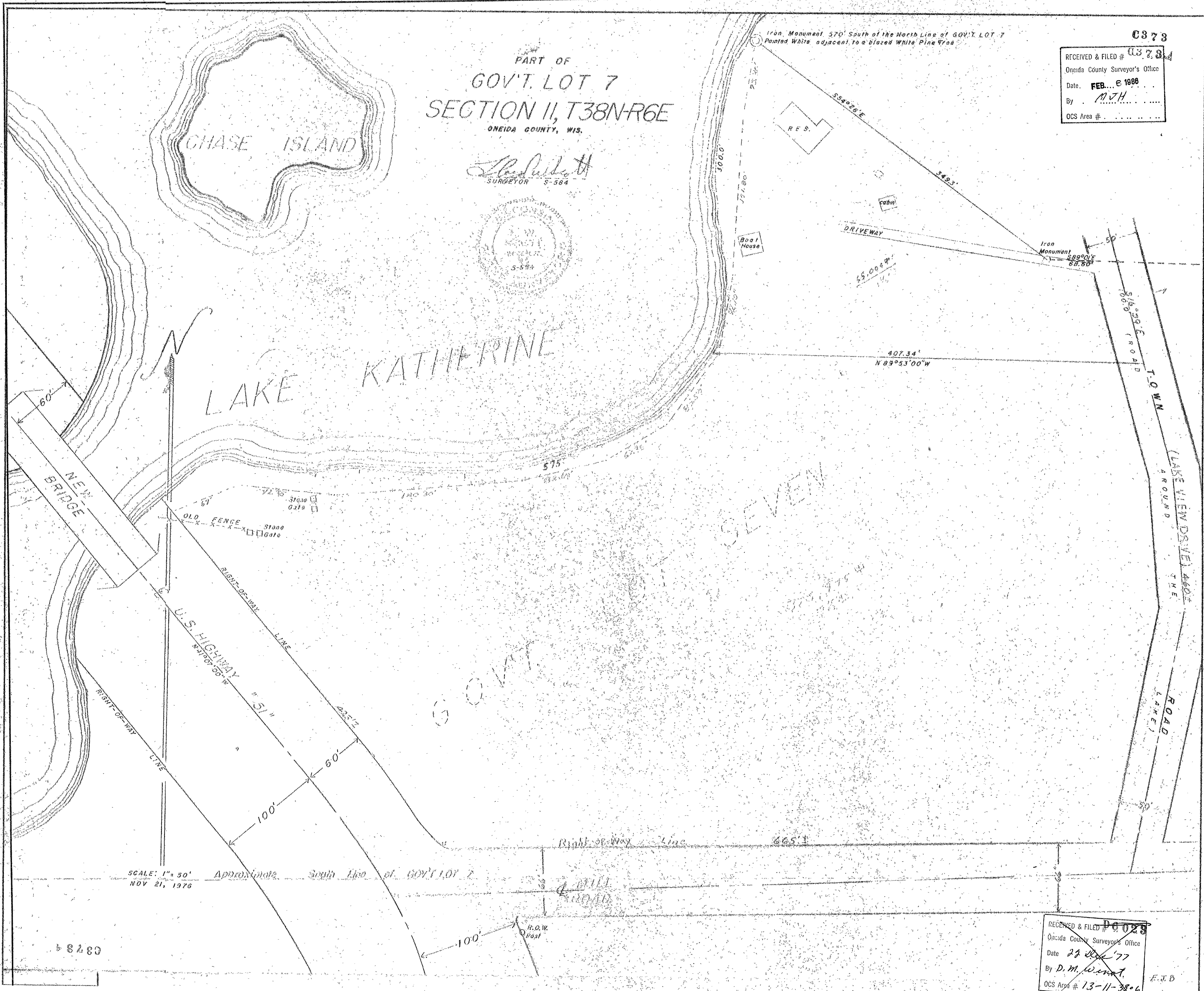


PART OF
GOV'T. LOT 7
SECTION II, T38N-R6E
ONEIDA COUNTY, WIS.

Shelton
SURVEYOR S-584



0373
RECEIVED & FILED # 0373
Oneida County Surveyor's Office
Date FEB... E 1988
By M.J.H.
OCS Area #



SCALE: 1" = 50' Approximate South Line of GOV'T LOT 7
NOV 21, 1976

0373

RECEIVED & FILED # 0373
Oneida County Surveyor's Office
Date 22 DEC 77
By D.M. Wentz
OCS Area # 13-11-386
E.J.B.