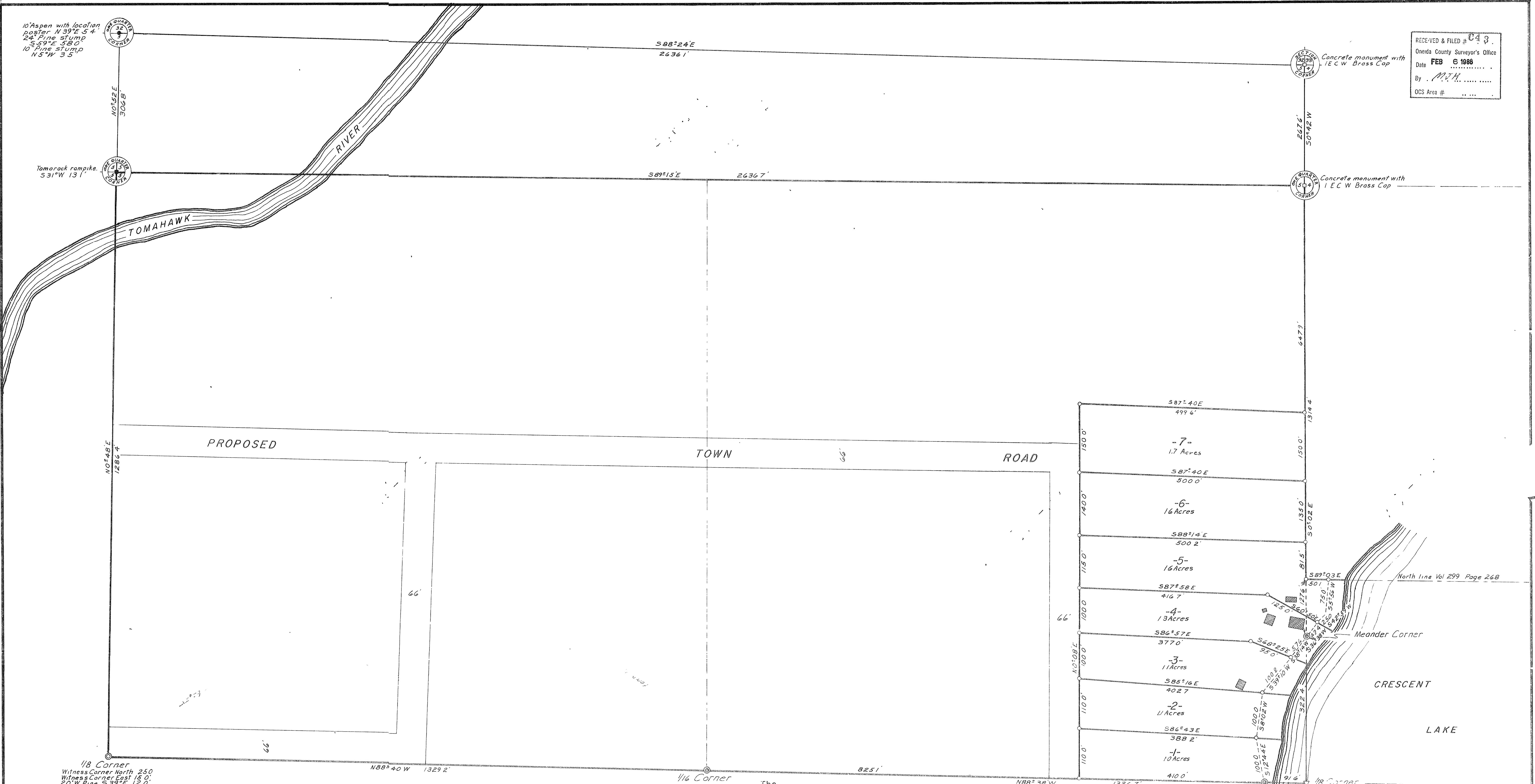


10' Aspen with location
poster W 39° E 5.4
24' Pine stump
5.59° E 58.0
10' Pine stump
N 5° W 3.5

RECEIVED & FILED # 043
Oneida County Surveyor's Office
Date FEB 6 1986
By MTH
OCS Area #



1/8 Corner
Witness Corner North 250
Witness Corner East 16.0'
20° W Pine S 39° E 12.0'

The
NE 1/4 of the SE 1/4, NW 1/4 of the SE 1/4
and
FRACTIONAL NE 1/4
SECTION 5
and part of the
NW 1/4 of the SW 1/4
SECTION 4
T39N, R6E
Oneida County, Wis

Scale 1"=100'

Northwoods Surveyors Inc

May, 1970
Revised October, 1971

William D. ...
Land Surveyor

○=Iron pipe found in place
□=Concrete monument found in place
⊞=Wood post found in place
⊕=Iron pipe set
▽=Corner falls in lake

HERBERT MOORE
County Surveyor
Oneida County, Wisconsin
Rhinelander, Wisconsin 54501