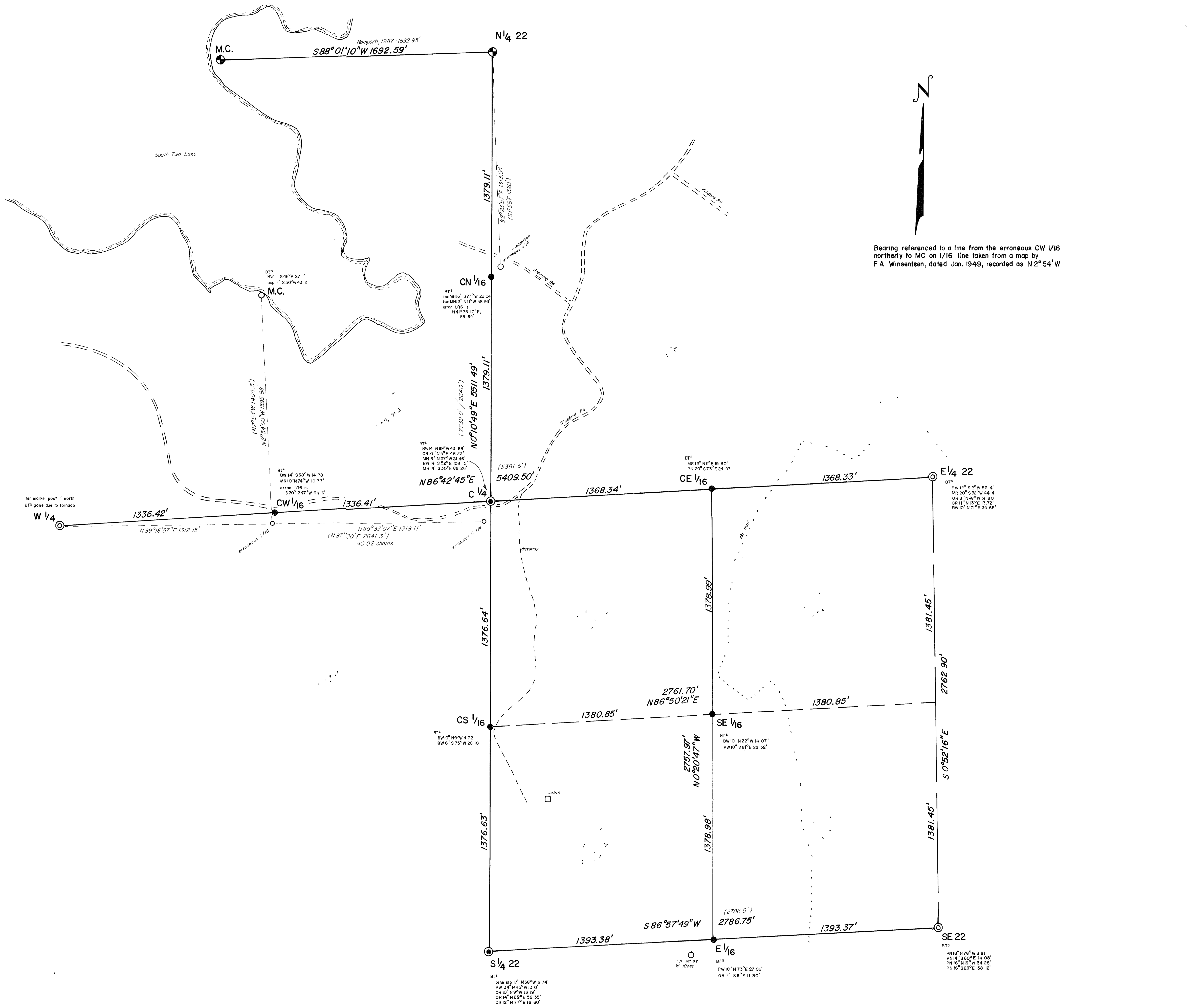


6547

RECEIVED & FILED # 0547
 Oneida County Surveyor's Office
 Date JUN 13 1987
 By MGR
 DCS Area #



Bearing referenced to a line from the erroneous CW 1/16 northerly to MC on 1/16 line taken from a map by F.A. Winsentsen, dated Jan. 1949, recorded as N 2° 54' W

LEGEND

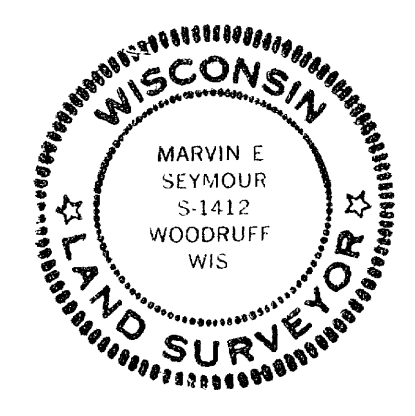
- Monuments found in place
- Oneida Co. aluminum
 - ⊙ W.C.D. 2" iron pipe w/brass cap
 - 1" iron pipe
- Monuments set
- ⊙ D.N.R. 2" iron pipe w/brass cap
 - 1" iron pipe

(A, 00) Recorded bearing and distance from Winsentsen map

Notes
 The erroneous C1/4 used by Winsentsen was not verified at the time by going 1/4 cor. to 1/4 cor. N/S & E/W. A distance of 40 chains was used north which I find to be longer. His notes show nothing that he went north from C 1/4. I placed the correct location of the C 1/4 at the intersection of straight lines between opposite 1/4 corners.

There are other surveys by Gensot Eng. and Northwoods Surveyors that use the line from the N 1/4 22 to the erroneous CN 1/16.

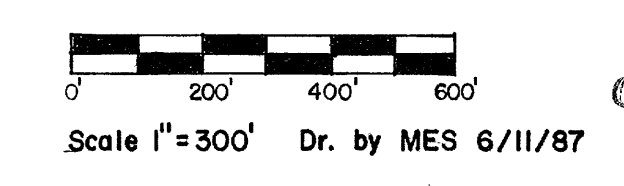
Survey completed 6/5/87. Field notes filed at Trout Lake Sta., Boulder Jct. WI



I, M.E. Seymour, R.L.S. 1412 certify this is a correct representation of Sec. 22, T 38 N, R 7 E, to the best of my knowledge and belief.
Marvin E. Seymour June 11, 1987

PARTIAL SUBDIVISION
T 38 N, R 7 E, Oneida Co.
Sec. 22

Survey for the State of Wisconsin
 Department of Natural Resources



6547

6547