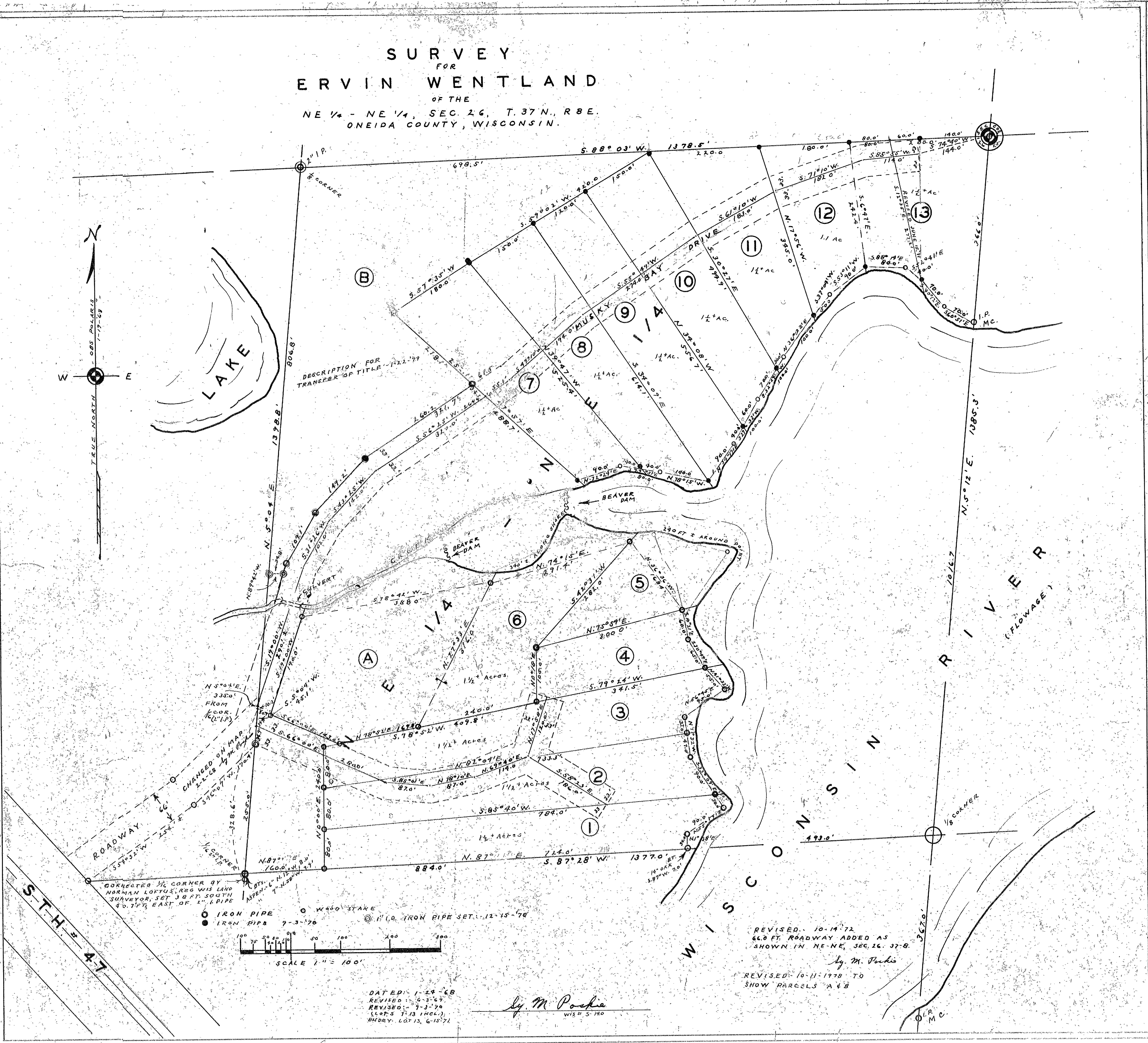
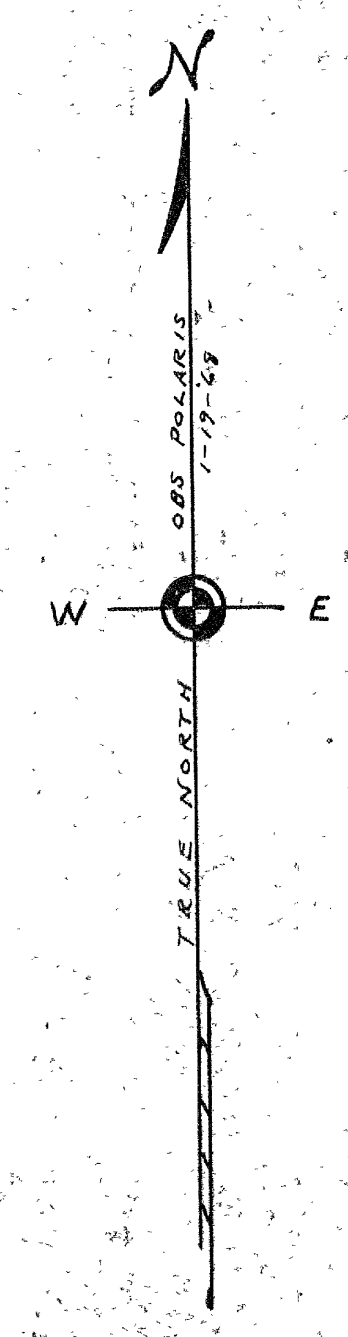


1180-

RECEIVED & FILED
Oneida County Surveyor's Office
Date JUN 6 1989
By: R.S.
D.C.S. Area #

SURVEY FOR ERVIN WENTLAND OF THE NE 1/4 - NE 1/4, SEC 26, T.37N., R.8E. ONEIDA COUNTY, WISCONSIN.



LEGEND:
● IRON PIPE 7-3-76
○ W450 STAKE
○ (C) IRON PIPE SET 12-15-78

CHANGED ON MAP
CORRECTED 1/2 CORNER BY
NORMAN LOFTUS, REG. WIS. LAND
SURVEYOR, SET 3.8 FT. SOUTH
30.7 FT. EAST OF 1/4 CORNER

SCALE 1" = 100'

DATED: 1-24-68
REVISED: 5-3-69
REVISED: 7-1-78
(LOTS 7-13 INCL.)
BUDBY. LOT 13, 6-15-71

By M. Poehle
WIS 5 150

REVISED: 10-14-72
66.0 FT. ROADWAY ADDED AS
SHOWN IN NE-NE, SEC. 26, 37-B.
By M. Poehle
REVISED: 10-11-77 TO
SHOW PARCELS A & B

1180

1183 U