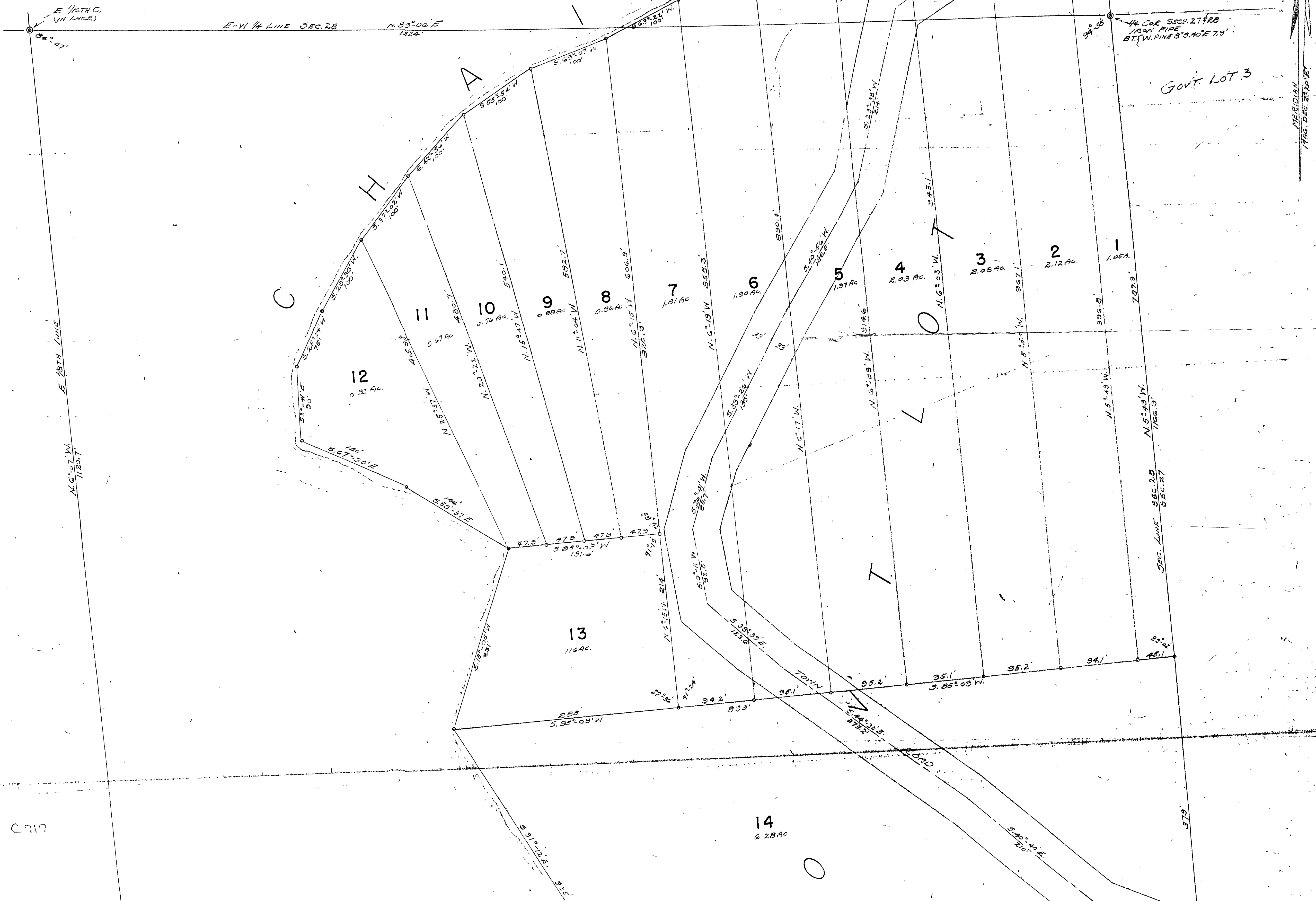


C717

PART OF GOV'T. LOT 6, SEC. 28, T. 39 N. R. 9 E.
OF THE 4TH P.M., ONEIDA COUNTY, WISCONSIN.

RECEIVED & FILED #C717
Oneida County Surveyor's Office
Date NOV. 1
By M.S.E.
OCS Area #

979 6-18-88



GOV'T. LOT 2
SEC 27

GOV'T. LOT 3

C717

C717

14
6.28 Ac