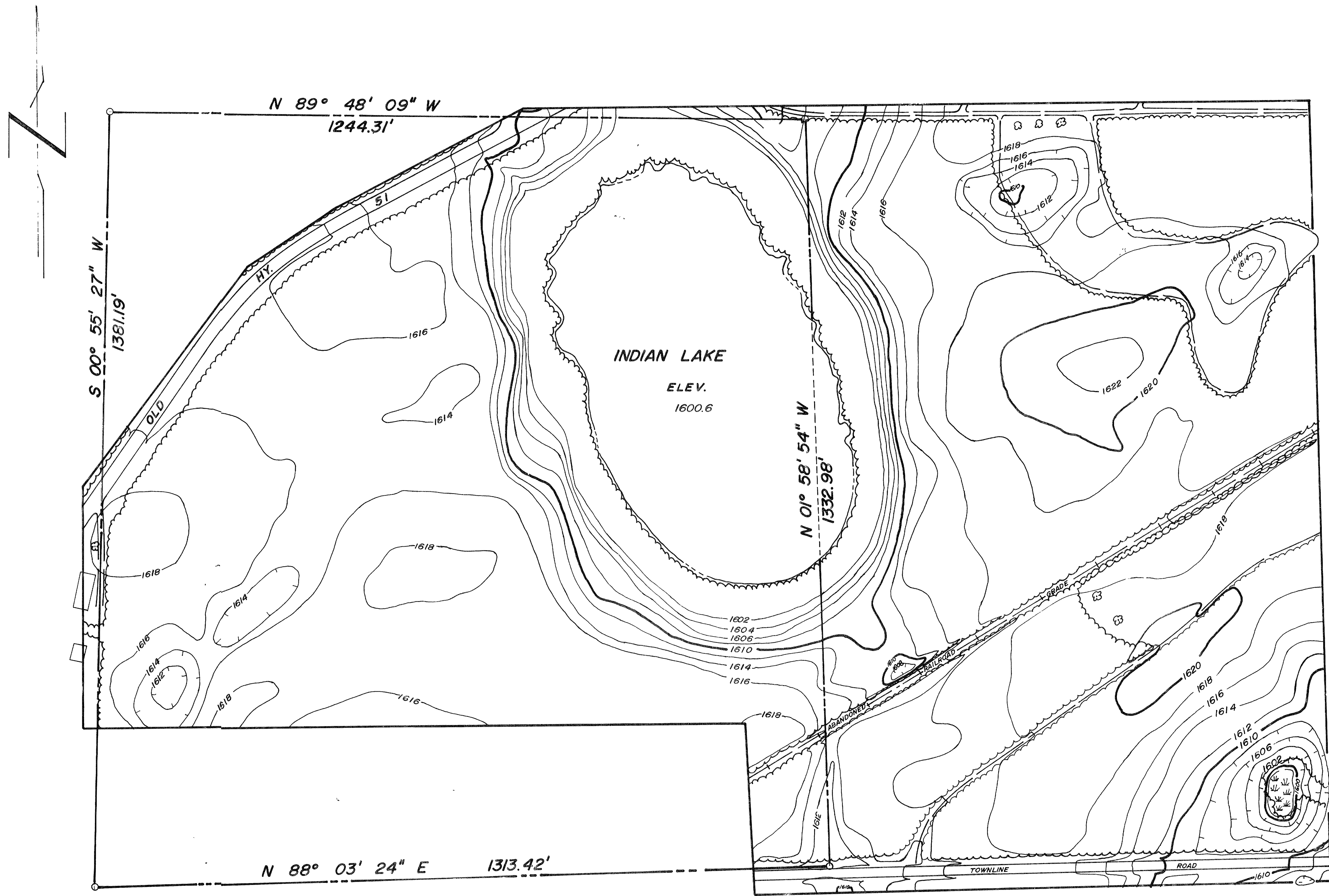


RECEIVED & FILED # 079
Oneida County Surveyor's Office
Date FEB 6 1988
By M.J.H.
OCS Area #



NOTE
ASSUMED GRID BASED ON INITIAL STARTING POINT
OF BOUNDARY SURVEY AS 5000 000 NORTH, 5000 000
EAST
VERTICAL DATUM IS MEAN SEA LEVEL.
VERTICAL CONTROL ESTABLISHED BY DIFFERENTIAL
LEVELING
HORIZONTAL CONTROL ESTABLISHED BY USE OF
ELECTRONIC DISTANCE MEASURING EQUIPMENT (WILD DI-10 DISTOMAT)
CONTROL SERVICES PROVIDED BY INMAN INC. MINOCQUA, WISCONSIN

LEGEND
PRIMARY ROAD
SECONDARY ROAD
TRAIL
BUILDING
LAKE OR POND
DRAINAGE
TREE
WOODED AREA

SCALE 1" = 100'
0 50 100 200 300 400 FEET
CONTOUR INTERVAL: 2 FEET
TOPOGRAPHY BY PHOTOGRAMMETRIC METHODS FROM AERIAL
PHOTOGRAPHS TAKEN IN NOVEMBER, 1971

14-36-40.6
1-1-39.6
38-9110

Handwritten signature

HERBERT MOORE
County Surveyor
Oneida County, Wisconsin
Rhineland, Wis. 54501

"INDIAN LAKE RESORT"

SCALE: 1" = 100'
DRAWN BY: W.T.
CHECKED BY: G.I.
SHEET: 1 OF 1
DATE: 12/21/71
JOB NO.: 1054

inman, inc.
ENGINEERS
SURVEYORS
LAND PLANNERS
MILWAUKEE, WISCONSIN MINOCQUA, WISCONSIN