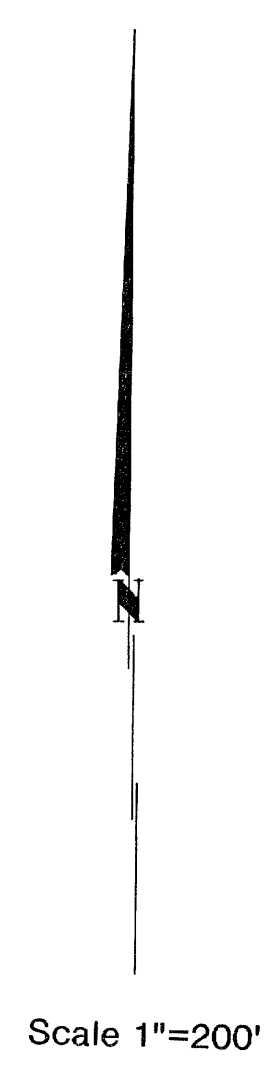
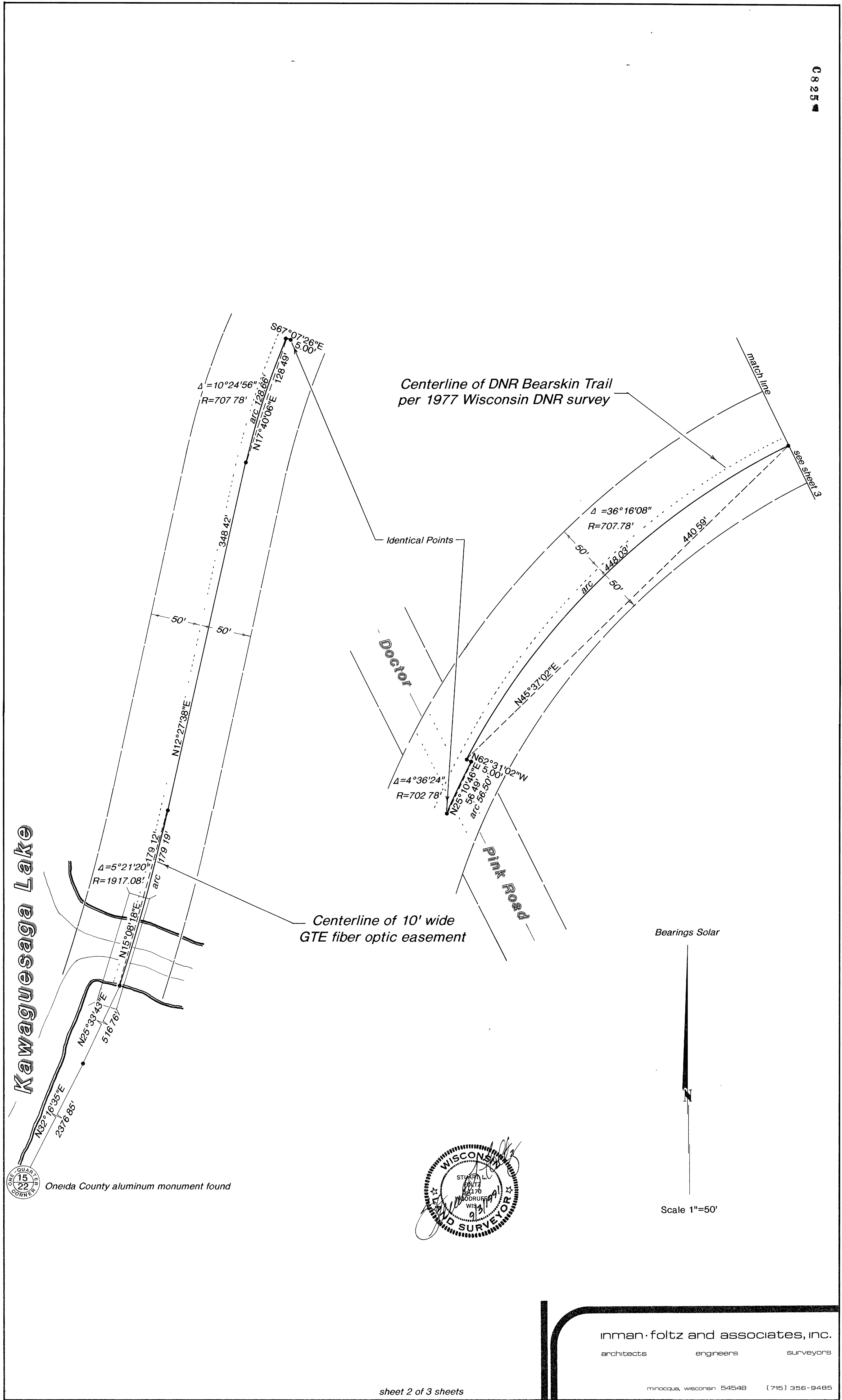


RECEIVED & FILED #
 Oneida County Surveyor's Office
 Date OCT 17 1991
 By [Signature]
 OCS Area #

Addition to
Centerline of GTE Fiber Optic Easement
 Being part of
GOV'T. LOT 4, SECTION 14
 and part of
GOV'T. LOT 5, SECTION 15
T39N, R6E
 Town of Minocqua
 Oneida County, Wisconsin

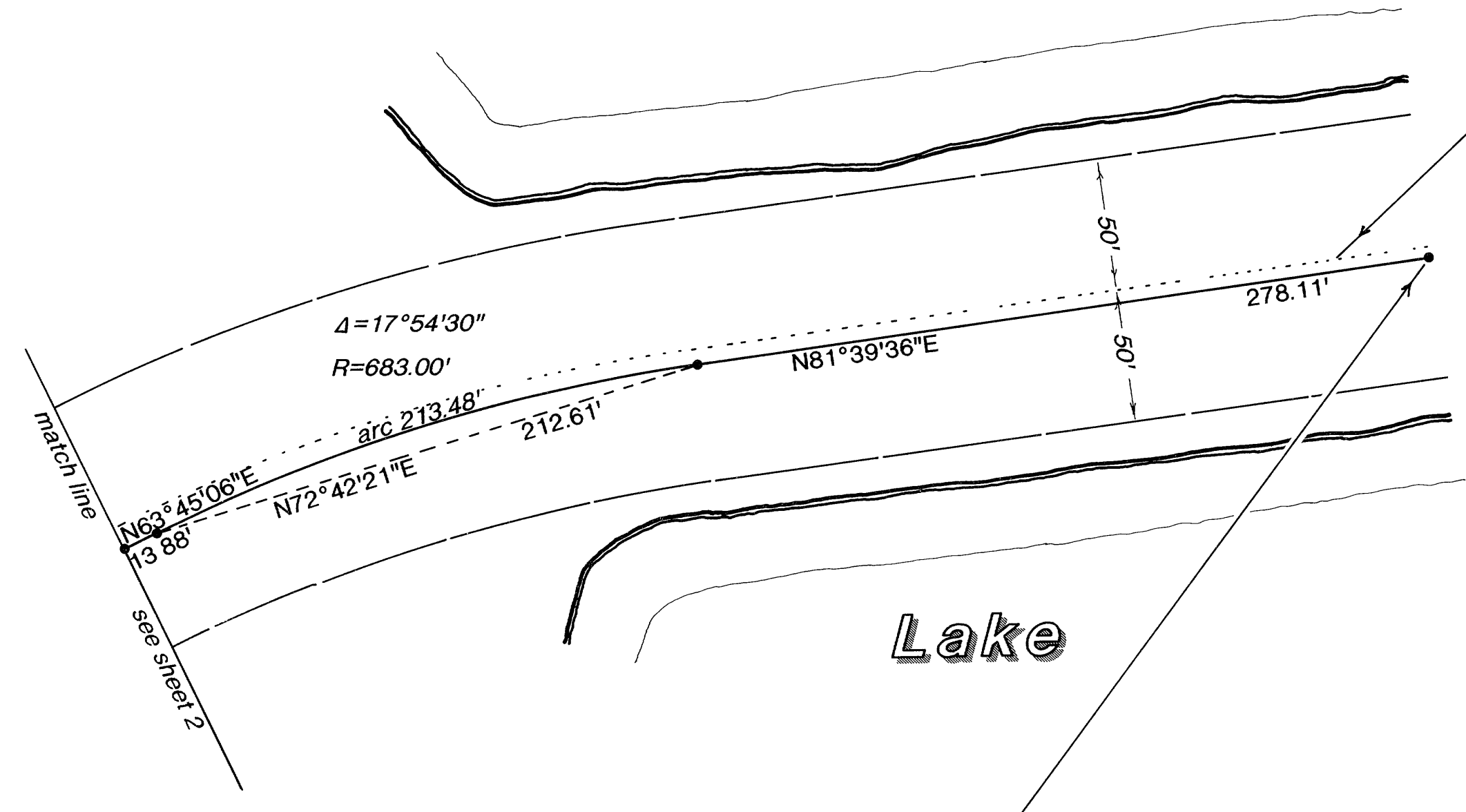


inman·foltz and associates, inc.
 architects engineers surveyors



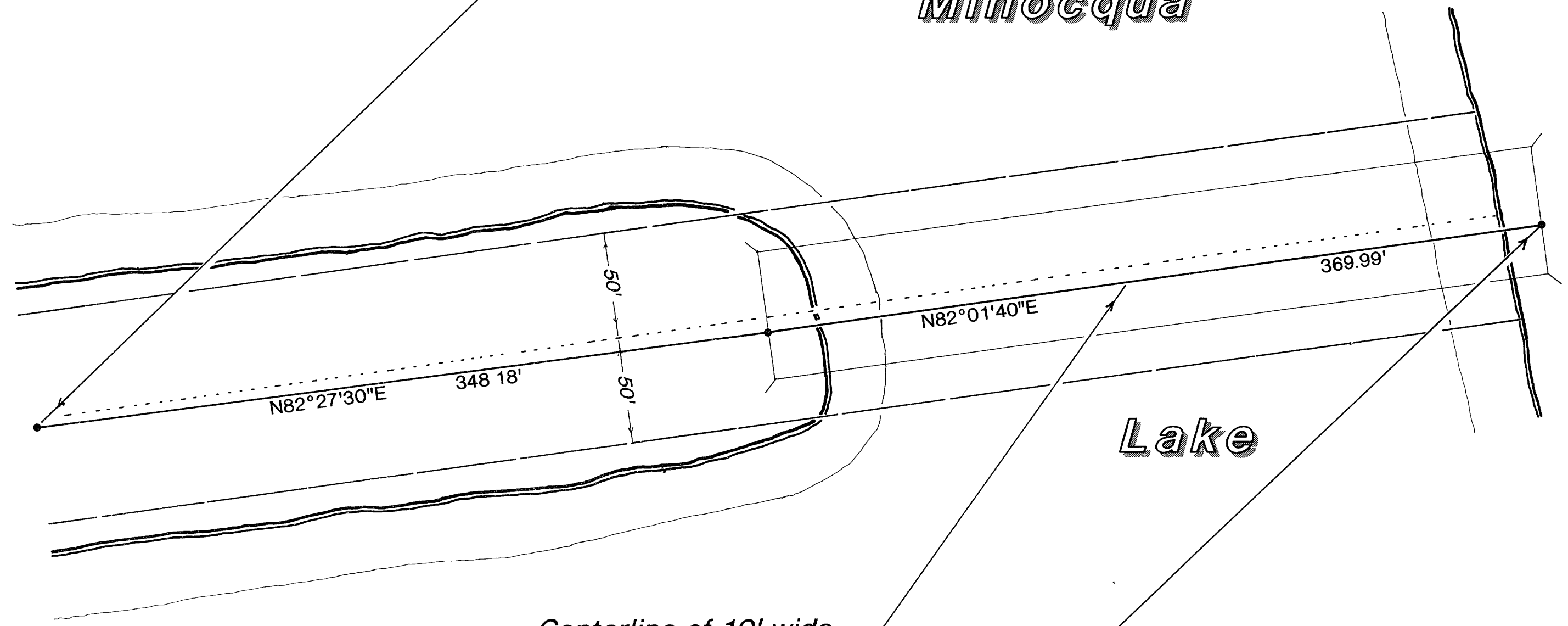
Centerline of DNR Bearskin Trail per 1977 Wisconsin DNR survey

Minocqua



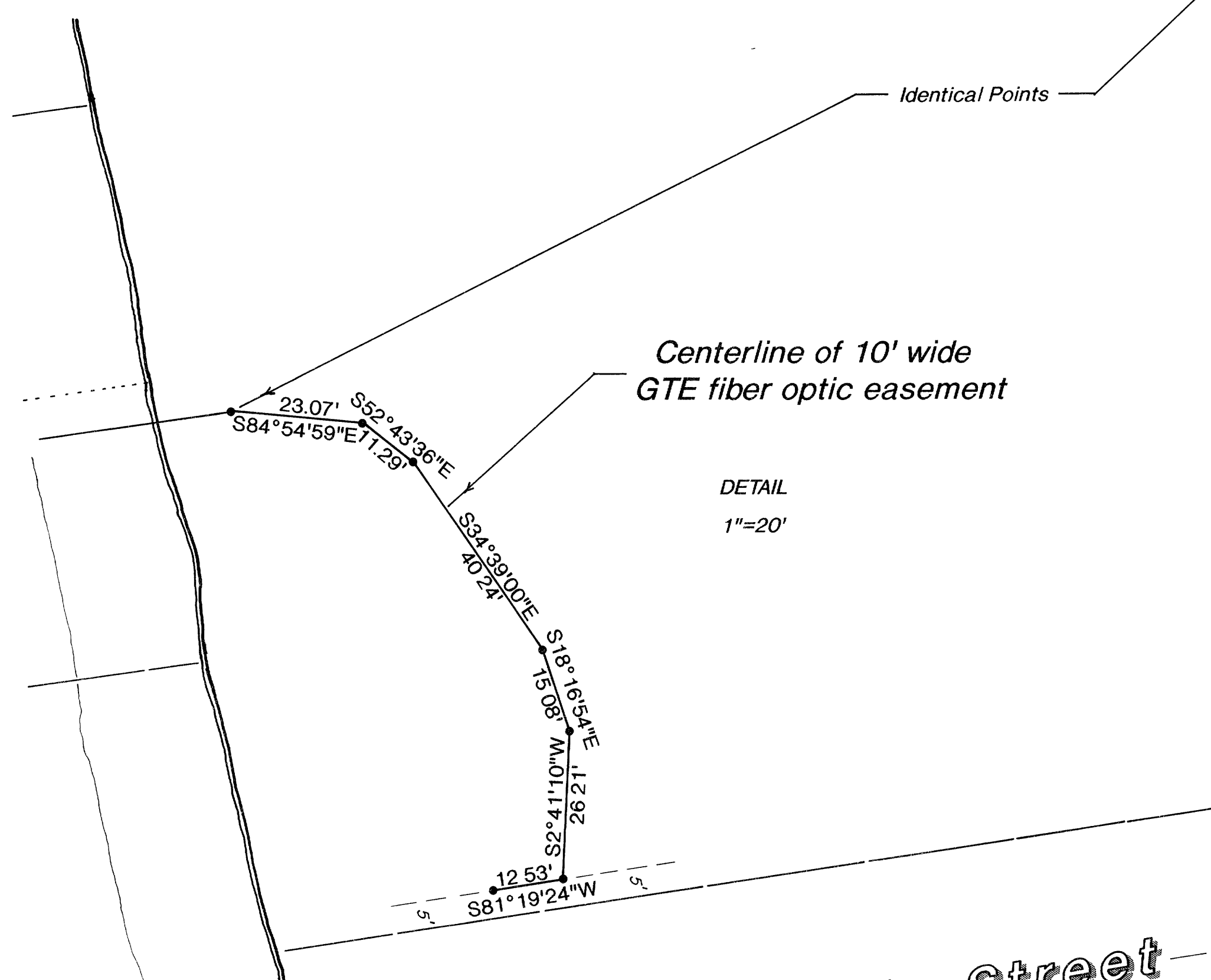
Lake

Minocqua



Lake

Centerline of 10' wide GTE fiber optic easement

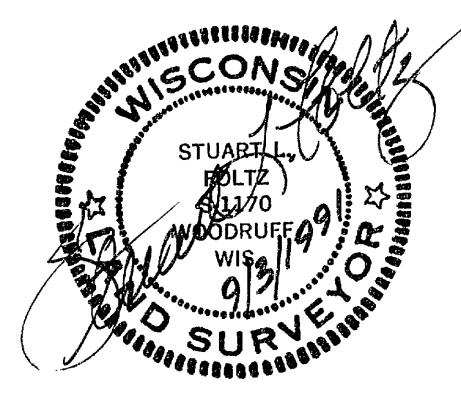


Centerline of 10' wide GTE fiber optic easement

DETAIL
1"=20'

Bearings Solar

Scale 1"=50'



Front Street

inman·foltz and associates, inc.
 architects engineers surveyors

sheet 3 of 3 sheets

minocqua wisconsin 54548 (715) 356-9485