
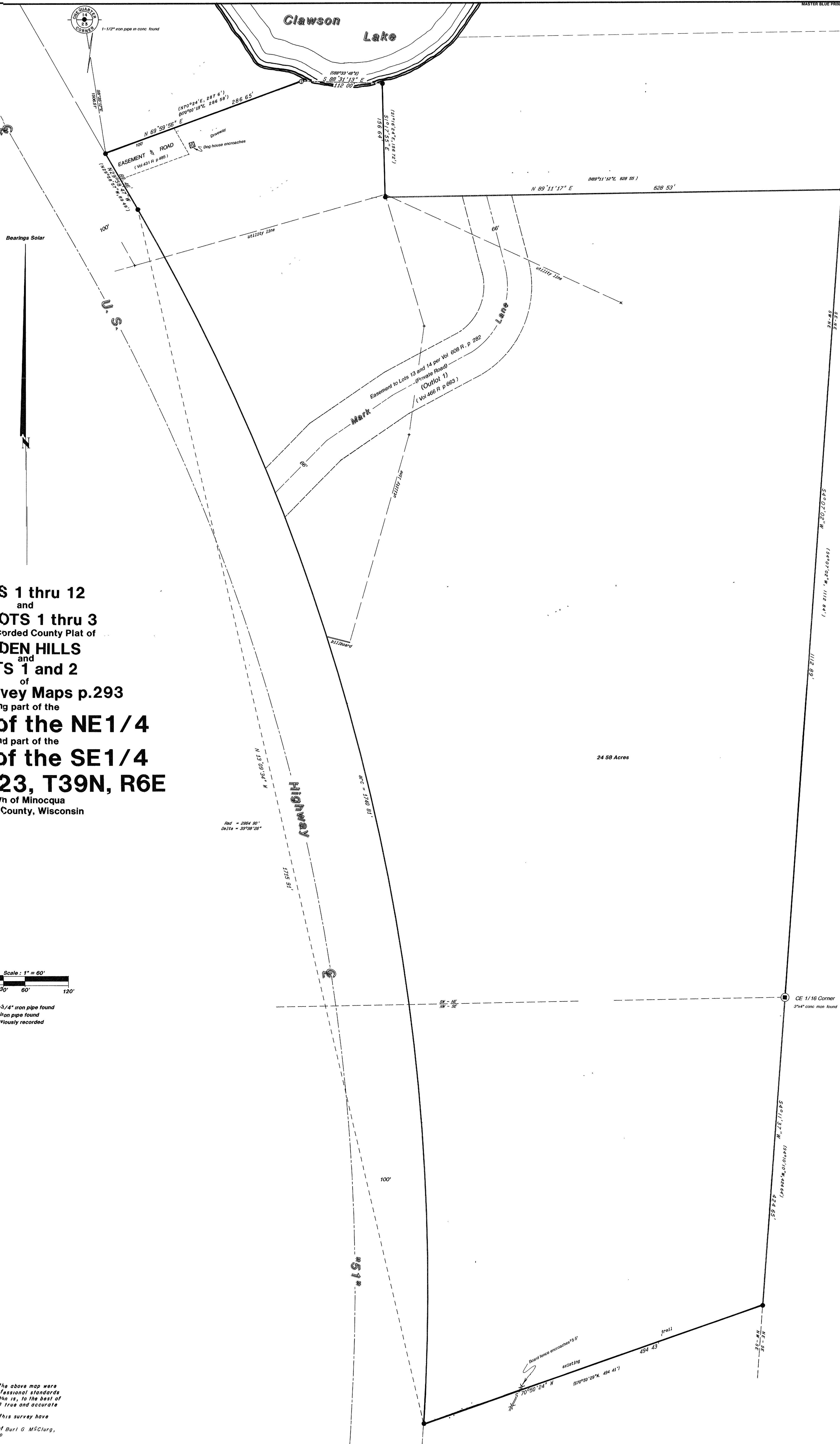



C 8 6 2
 RECEIVED & FILED #.....
 Onpeida County Surveyor's Office
 Date MAR 31 1992
 By 
 CUS 3 #



LOTS 1 thru 12
and
OUTLOTS 1 thru 3
of the recorded County Plat of
HIDDEN HILLS
and
LOTS 1 and 2
of
.1 Survey Maps p.293
being part of the
/4 of the NE1/4
and part of the
/4 of the SE1/4
ION 23, T39N, R6E
Town of Minocqua
Oneida County, Wisconsin

Scale : 1" = 60'



0' 30' 60' 120'

① = 1-3/4" iron pipe found
● = 1" iron pipe found
() = previously recorded

I hereby certify that this survey and the above map were made in accordance with acceptable professional standards and that the information contained thereon is, to the best of my knowledge, information and belief, a true and accurate representation thereof

Any legal descriptions conforming to this survey have been provided on separate sheets

The above survey was made by order of Burl G McElurg, V P , Company Stores Development Corp

DATE	REVISIONS		
1/27/92	no	date	
JOB NO			
0124			
DRAWN			
CEW			
CHECKED			
SLF			

COMPANY STORES

Inman · Foltz and Associates, Inc.
architects engineers surveyors
8612 highway 51 north
minocqua, wisconsin 54548 (715) 356-9485