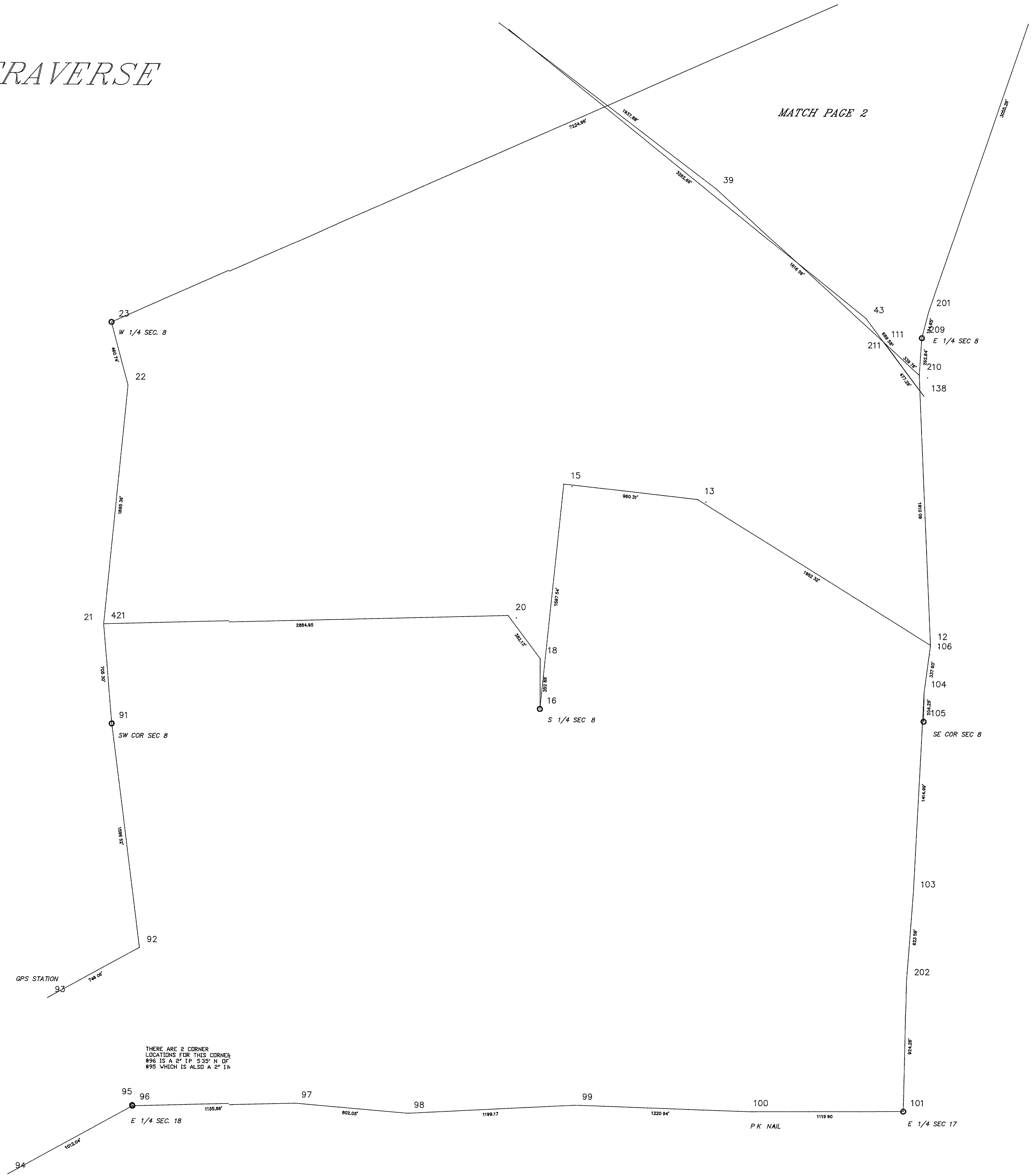


CONTROL TRAVERSE

RECEIVED & FILED #
 On:da County Surveyor's Office
 Date JUN 26 1992
 By 90
 DCS Area #

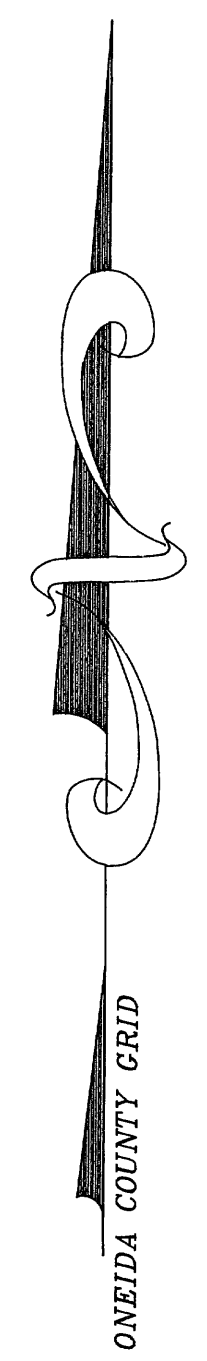
MATCH PAGE 2

THIS IS A HORIZONTAL CONTROL TRAVERSE AND DOES NOT REPRESENT A BOUNDARY SURVEY.

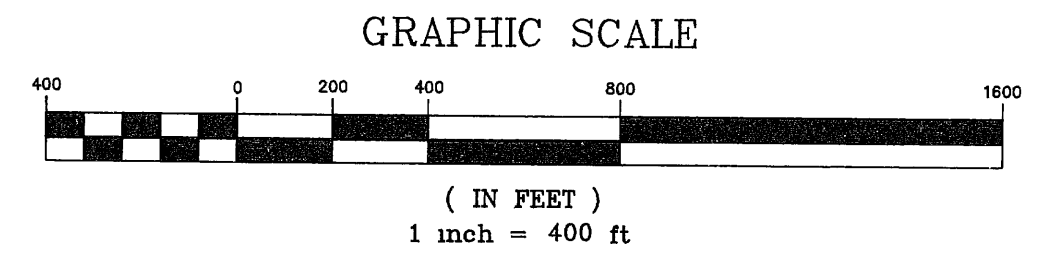


LEGEND

- REPRESENTS GOVERNMENT CORNER
SEE SECTION CORNER SHEET FOR EXACT MONUMENT TYPE
- ALL CONTROL POINTS ARE 1/2"x12" IRON RODS UNLESS OTHERWISE NOTED
- ALL DISTANCES SHOWN ARE GROUND DISTANCES, TO BE USED ONLY FOR LOCATING POINTS IN THE FIELD. COMPLETE ADJUSTED DATA SHOULD BE OBTAINED FROM THE ONEIDA COUNTY LAND INFORMATION OFFICE.
- INFORMATION CONTAINED HEREON REPRESENTS A SERIES OF CLOSED LOOPS BEFORE ADJUSTMENT. ALL LOOPS HAVE A MINIMUM ACCURACY OF 1:20,000.



WISCONSIN
 DEVON VANDEN HEUVEL
 S-1785
 RHNELANDER
 WISCONSIN
Devon Vandenberg
 6-25-92



THERE ARE 2 CORNER LOCATIONS FOR THIS CORNER:
 #96 IS A 2" 1P 5'35" N 0P
 #95 WHICH IS ALSO A 2" 1P

NO.	DATE	REVISIONS	BY

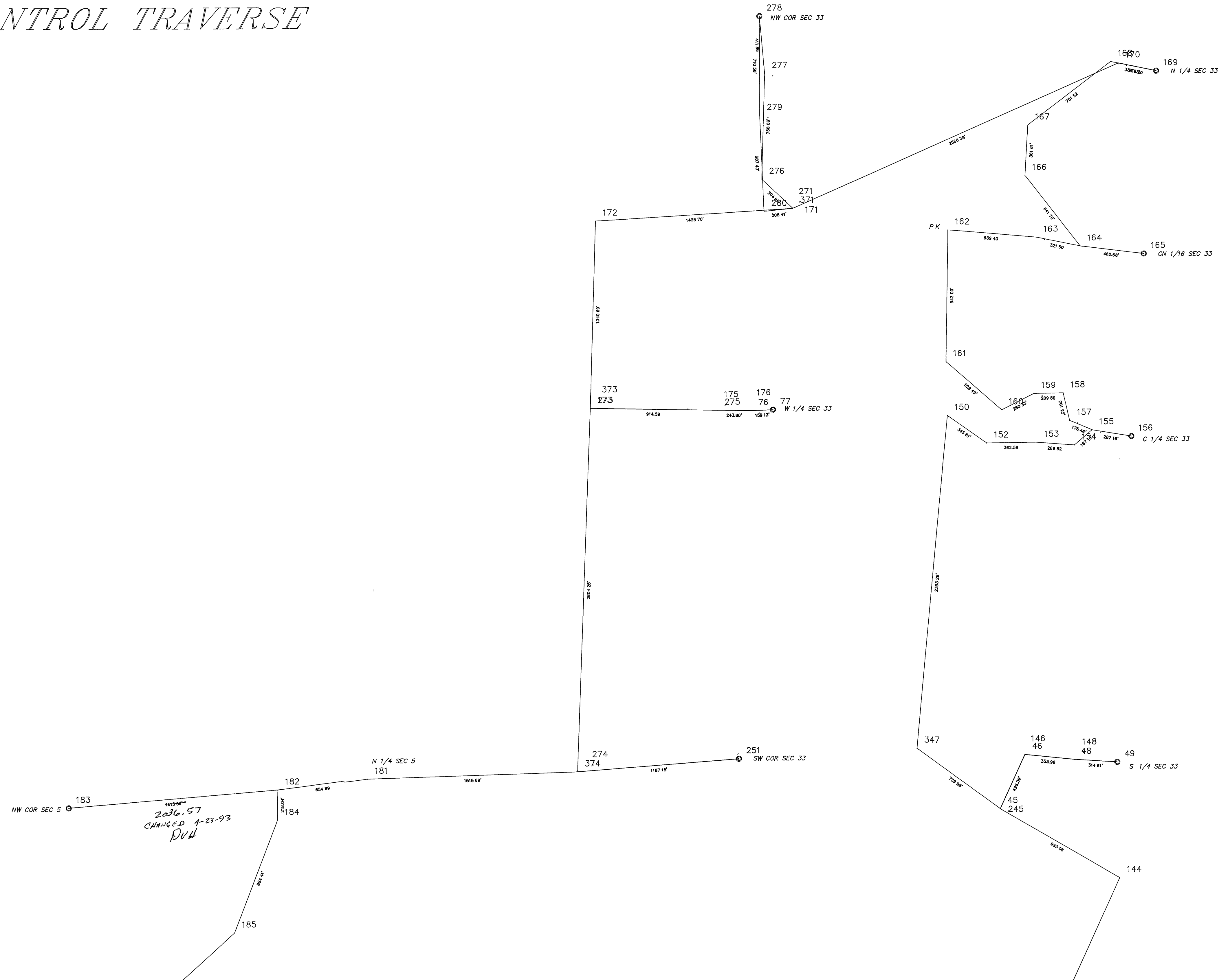
(C)1989 MID-STATE ASSOCIATES, INC.
CONTROL TRAVERSE
 LOCATED IN SECTIONS 4, 5, 8, 9 & 17 OF T.36N., R.9E., TOWN OF PELICAN, AND THE CITY OF RHINELANDER ONEIDA COUNTY, WISCONSIN

MSA MID-STATE ASSOCIATES, INC.
 Engineers/Architects/Planners/Surveyors
 1230 SOUTH BLVD BARABOO WI 53913 608 556 8344
 PROJECT 989203
 DRAWN BY DVH DATE 6/92 SHEET 1 OF 3
 CHECKED BY SCALE 1"=400' FILE NO. _____

RECEIVED & FILED #
 Oneida County Surveyor's Office
 Date JUN 25 1992
 By *GD*
 OCS Area #

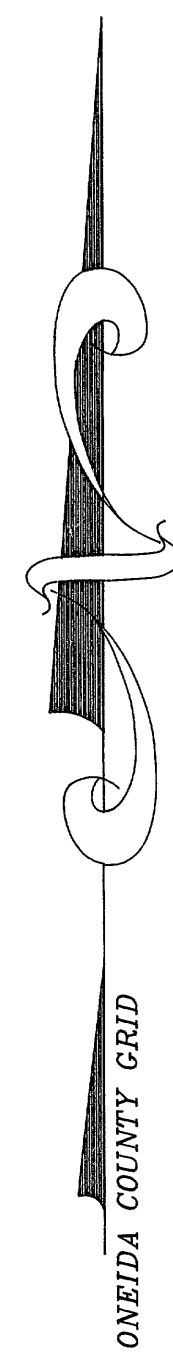
CONTROL TRAVERSE

THIS IS A HORIZONTAL CONTROL TRAVERSE AND DOES NOT REPRESENT A BOUNDARY SURVEY.

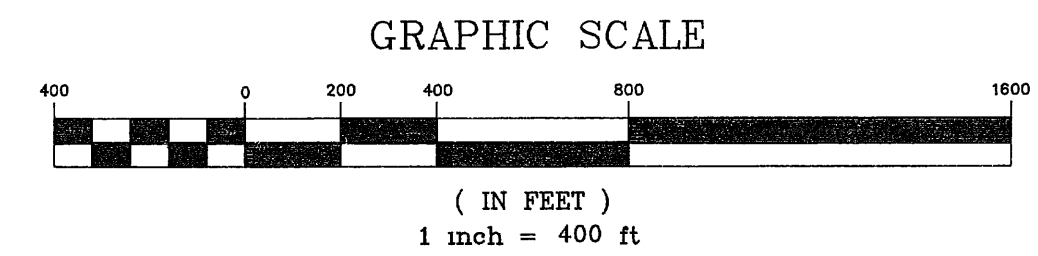


LEGEND

- REPRESENTS GOVERNMENT CORNER
SEE SECTION CORNER TIE SHEET FOR EXACT MONUMENT TYPE
- ALL CONTROL POINTS ARE 1/2"x12" IRON RODS UNLESS OTHERWISE NOTED
- ALL DISTANCES SHOWN ARE GROUND DISTANCES, TO BE USED ONLY FOR LOCATING POINTS IN THE FIELD. COMPLETE ADJUSTED DATA SHOULD BE OBTAINED FROM THE ONEIDA COUNTY LAND INFORMATION OFFICE
- INFORMATION CONTAINED HEREON REPRESENTS A SERIES OF CLOSED LOOPS BEFORE ADJUSTMENT. ALL LOOPS HAVE A MINIMUM ACCURACY OF 1:20,000



Devon Van der Velden
 6-25-92



*2076.57
 CHANGED 1-23-93
 DVH*

MATCH SHEET 2

NO.	DATE	REVISIONS	BY

©1989 MID-STATE ASSOCIATES, INC.
CONTROL TRAVERSE
 LOCATED IN SECTIONS 4, 5, 8, 9 & 17 OF T.36N., R.9E., TOWN OF PELICAN, & SECTION 33, T.37N., R.9E., TOWN OF PINE LAKE & THE CITY OF RHINELANDER ONEIDA COUNTY, WISCONSIN

MSA MID-STATE ASSOCIATES, INC.
 Engineers/Architects/Planners/Surveyors
 1220 SOUTH BLD. BARABOO WI 53003 608 366 6344

FILE	PROJECT	899203
DRAWN BY	DATE	6/92
CHECKED BY	SCALE	1"=400'

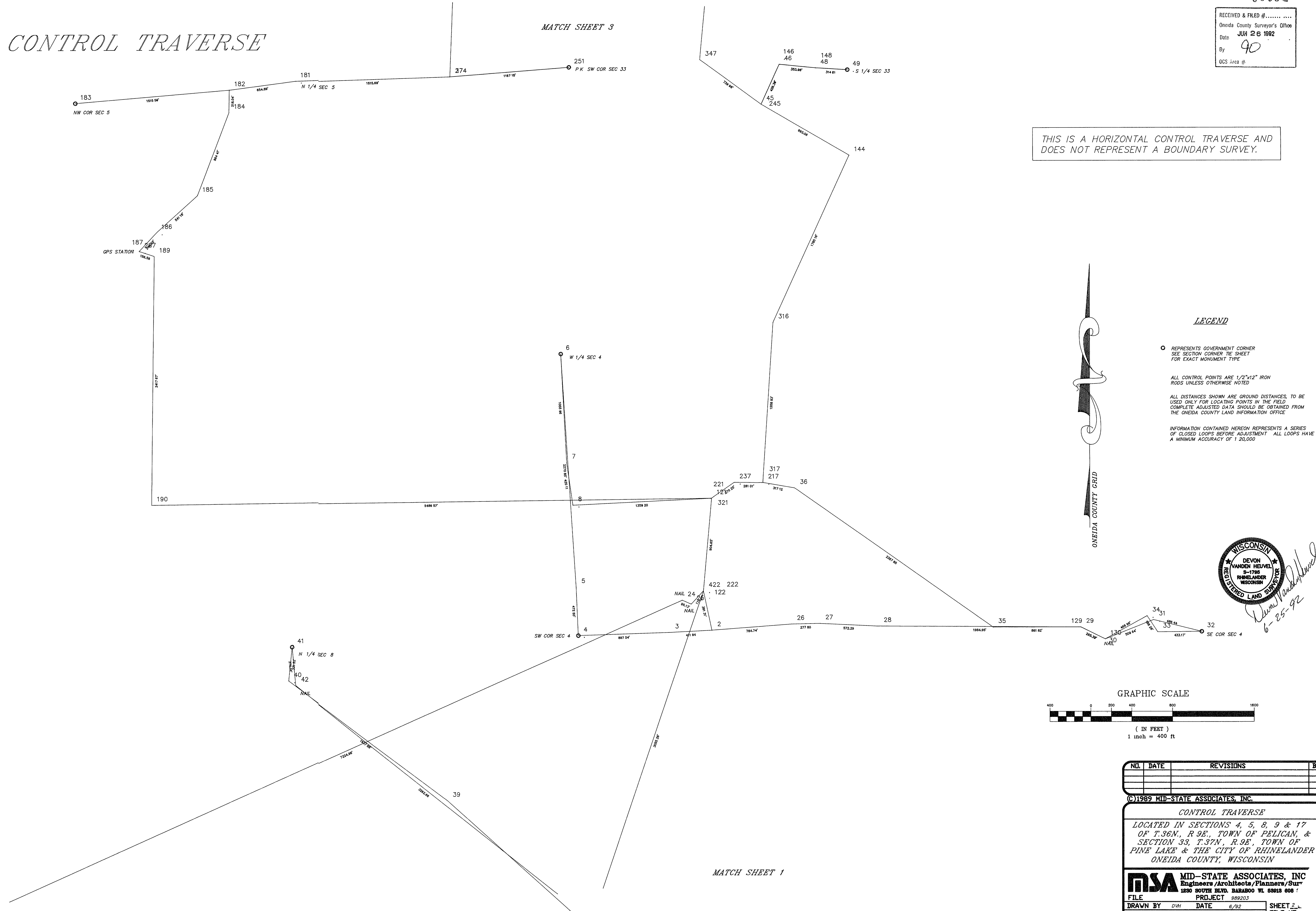
SHEET 3 OF 3
 FILE NO. _____

CONTROL TRAVERSE

MATCH SHEET 3

RECEIVED & FILED #.....
 Oneida County Surveyor's Office
 Date JUN 26 1992
 By 90
 OCS Area #

THIS IS A HORIZONTAL CONTROL TRAVERSE AND DOES NOT REPRESENT A BOUNDARY SURVEY.



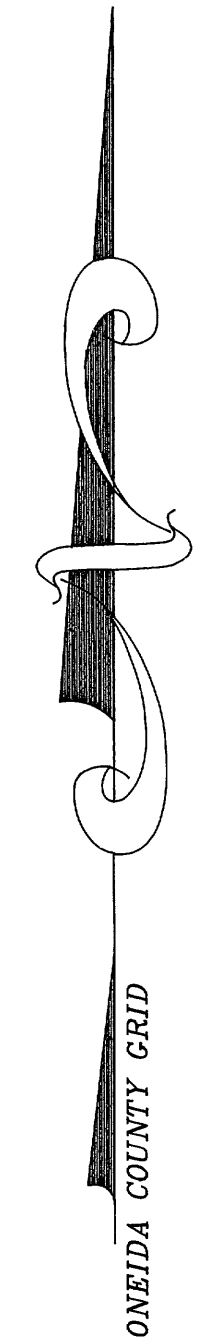
LEGEND

○ REPRESENTS GOVERNMENT CORNER
 SEE SECTION CORNER TIE SHEET
 FOR EXACT MONUMENT TYPE

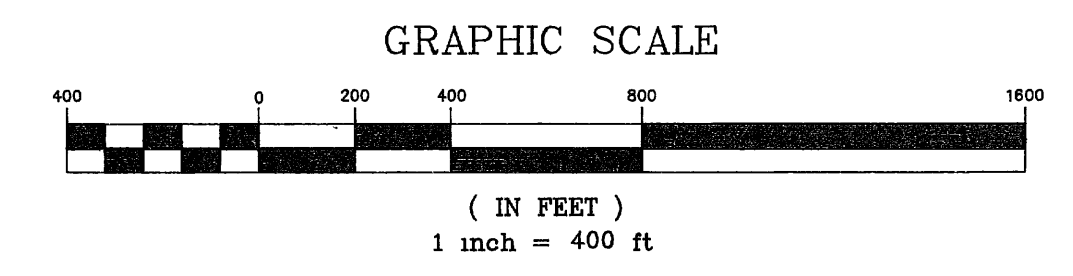
ALL CONTROL POINTS ARE 1/2"x12" IRON
 RODS UNLESS OTHERWISE NOTED

ALL DISTANCES SHOWN ARE GROUND DISTANCES, TO BE
 USED ONLY FOR LOCATING POINTS IN THE FIELD.
 COMPLETE ADJUSTED DATA SHOULD BE OBTAINED FROM
 THE ONEIDA COUNTY LAND INFORMATION OFFICE

INFORMATION CONTAINED HEREON REPRESENTS A SERIES
 OF CLOSED LOOPS BEFORE ADJUSTMENT. ALL LOOPS HAVE
 A MINIMUM ACCURACY OF 1:20,000



Devon Vanden Heuvel
 6-25-92



NO.	DATE	REVISIONS	BY

©1989 MID-STATE ASSOCIATES, INC.
CONTROL TRAVERSE
 LOCATED IN SECTIONS 4, 5, 8, 9 & 17
 OF T.36N., R.9E., TOWN OF PELICAN, &
 SECTION 33, T.37N., R.9E., TOWN OF
 PINE LAKE & THE CITY OF RHINELANDER
 ONEIDA COUNTY, WISCONSIN

MSA MID-STATE ASSOCIATES, INC.
 Engineers/Architects/Planners/Sur
 1230 SOUTH BLVD. BARABOO WI 53615 608 7
 FILE PROJECT 989203
 DRAWN BY DWH DATE 6/92 SHEET 2 of 2
 CHECKED BY SCALE 1"=400' FILE NO.

MATCH SHEET 1