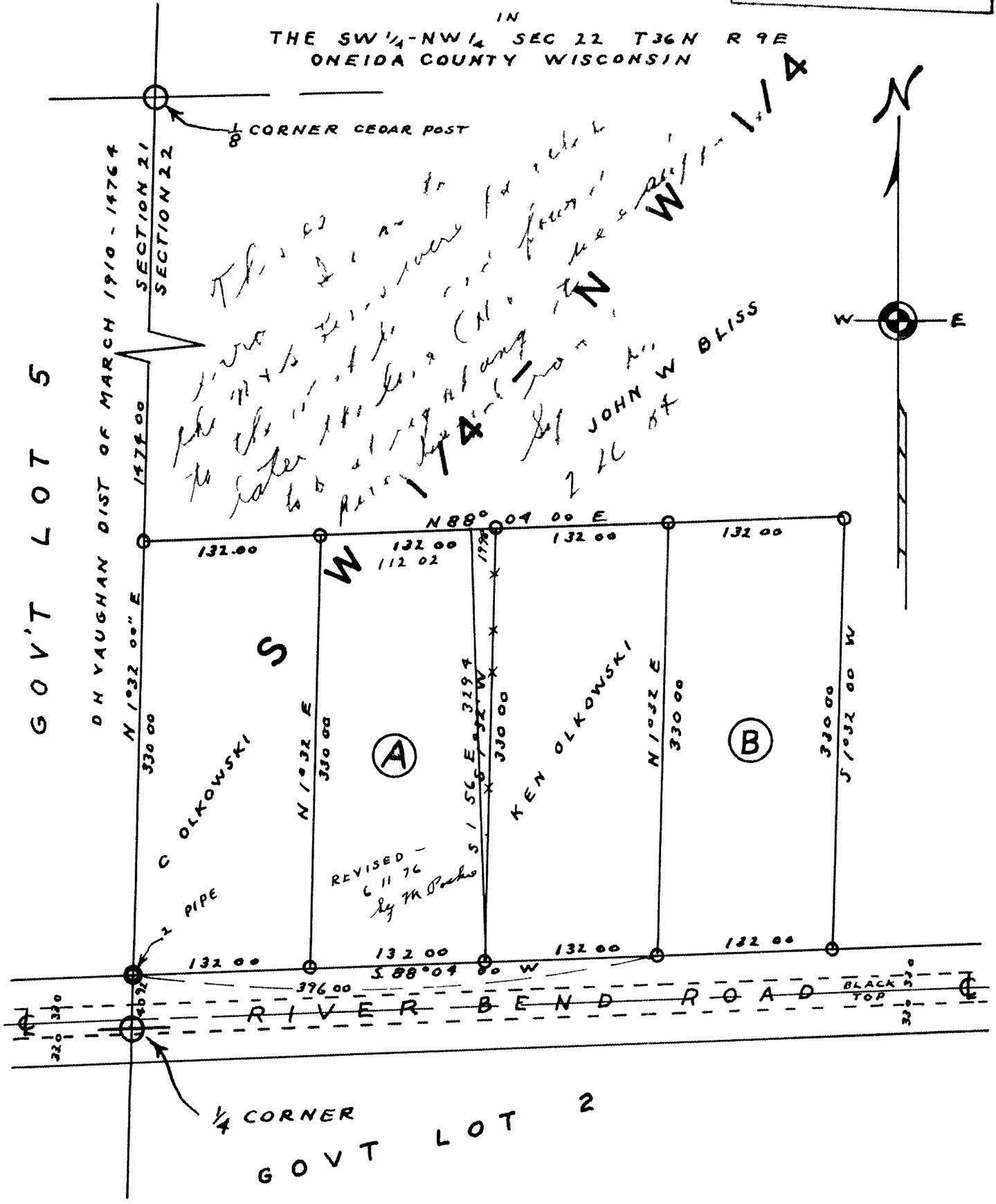


RECEIVED & FILED
 On da 1 1 9 0 C C
 Da JUL 25 1989
 B KP
 C C

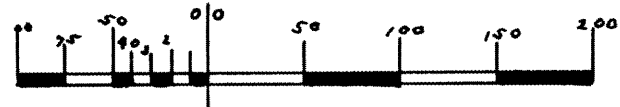
SURVEY FOR JOHN W BLISS

IN THE SW 1/4-NW 1/4 SEC 22 T36N R 9E ONEIDA COUNTY WISCONSIN



This is a survey of the SW 1/4-NW 1/4 Sec 22 T36N R9E Oneida County Wisconsin. The survey was made by John W Bliss on 8/14/74. The survey shows the boundaries of Gov't Lot 5 and Gov't Lot 2. The survey also shows the location of the Cedar Post and the Iron Pipe. The survey was revised by M. Poskie on 6/11/76.

REVISED -
 6 11 76
 by M Poskie



SCALE 1 100

DATED 8 14 1974

By M Poskie
 WIS # S 140