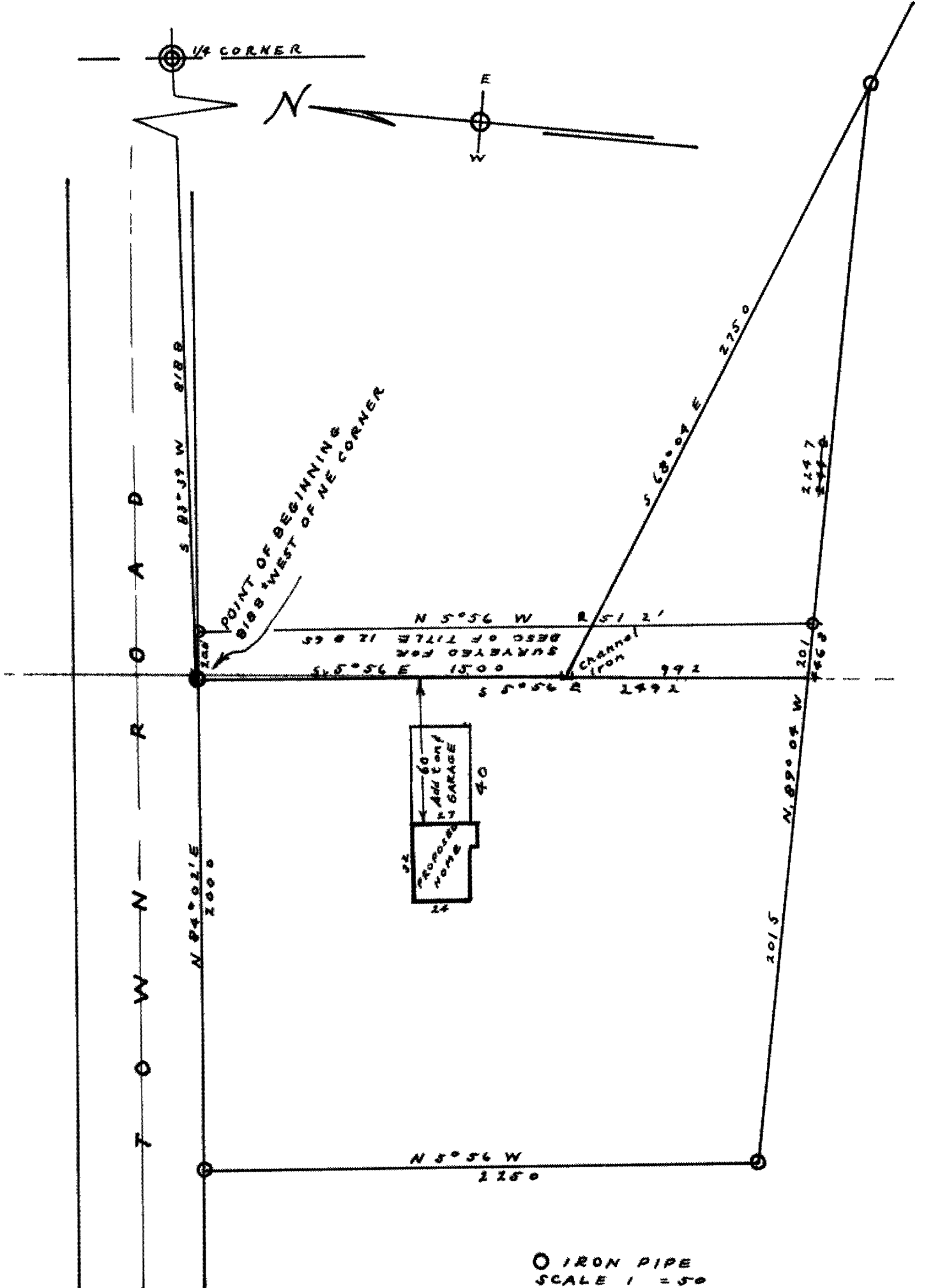


L1011

SURVEY FOR ED. DURKEE

OF PART OF N 12 - SE 114 SEC 35 T 27N, R 8E ONEIDA COUNTY, WISCONSIN

RECEIVED & FILED # **L1011**
Oneida County Surveyor's Office
Date **JUL 25 1989**
By *XP*
OCS Area #



○ IRON PIPE
SCALE 1" = 50'
DATE 4-6-60

By *M. Poehne*

L1011

L1011