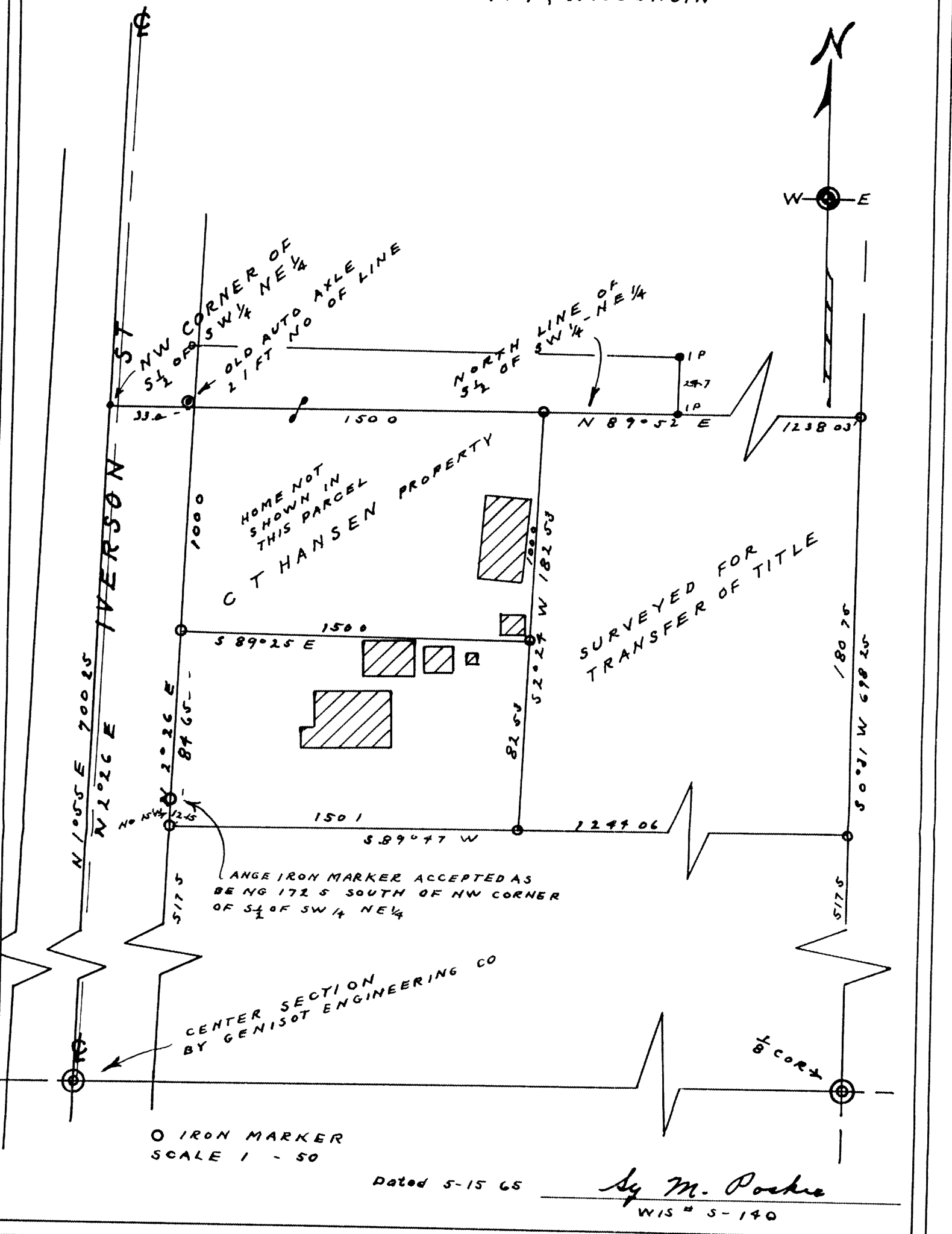


# SURVEY FOR RUTH ABRAHAMSON

RECEIVED & FILED #  
Oneida County Surveyors Office  
Date **JUL 25 1989**  
By *JP*  
OCS Area #

IN

THE S 1/2 OF SW 1/4 - NE 1/4, SEC 32, T37N, R9E  
ONEIDA COUNTY, WISCONSIN



○ IRON MARKER  
SCALE 1 - 50

Dated 5-15 65

By *M. Poskie*  
WIS # 5-140