

Stock No. 26273

PLAT OF SURVEY

U.S. Government Land
Being the N1/2-SW1/4, E1/2-NE1/4, And E1/2-SE1/4,
Section 24, Township 38 North, Range 3 East
Fourth Principal Meridian, Price County, Wisconsin



SCALE IN FEET



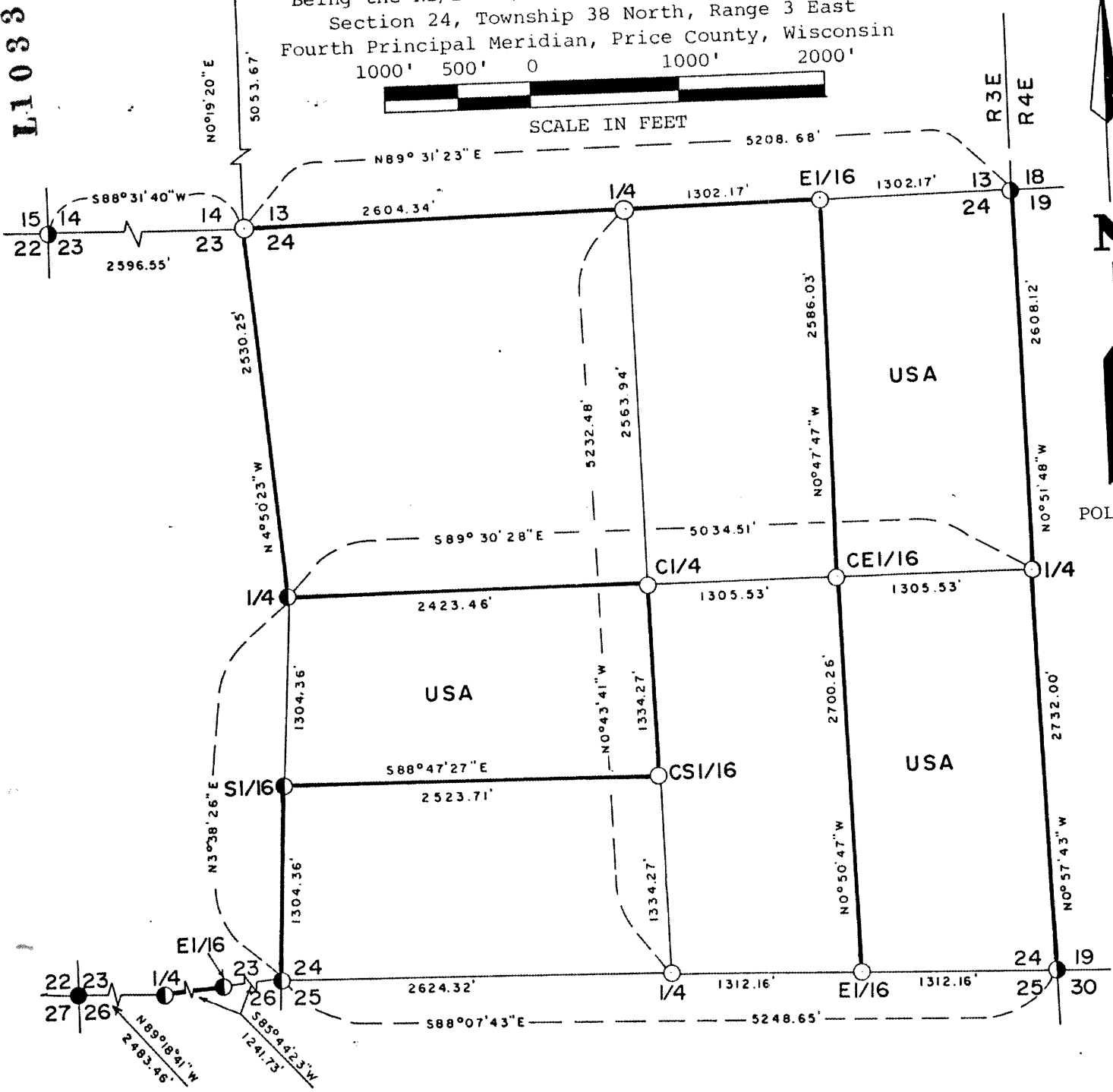
POLARIS

L1033

L1033

RECEIVED & FILED #.....
 On the County Surveyor's Office
 Date: 11-14-1988
 BY: [Signature]

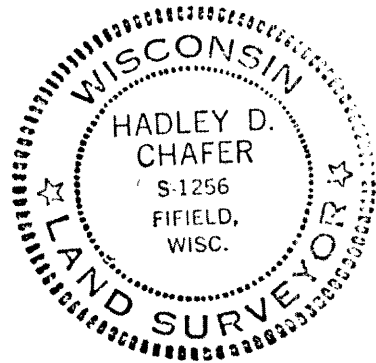
See Cor.
Restoration
Form For
Complete
Copy



- - Recovered a 1"x24" Iron Bar & 2 Reference Monuments, by S-785 in 1973.
- (with dot) - Recovered a 2"x60" Concrete filled Iron Pipe w/Brass Tablet stamped to Identify Corn
- (with cross) - Corner Monumented. Set 5/8"x24" Iron Pin & 2 Ref. Monuments 2"x48" Iron Pipes w/Brass T
- (with dot and cross) - Corner Monumented. Set a 2"x48" Iron Pipe with 3" Brass Tablet stamped to identify Cor
- True Line Established this Survey.

USA - U.S. Government Land

Conversion Factor
 Feet to Meters = 0.304801
 Meters to Feet = 3.280833



Hadley D. Chafer
 HADLEY D. CHAFER
 3/31/88
 DATE

L1033

L1033