

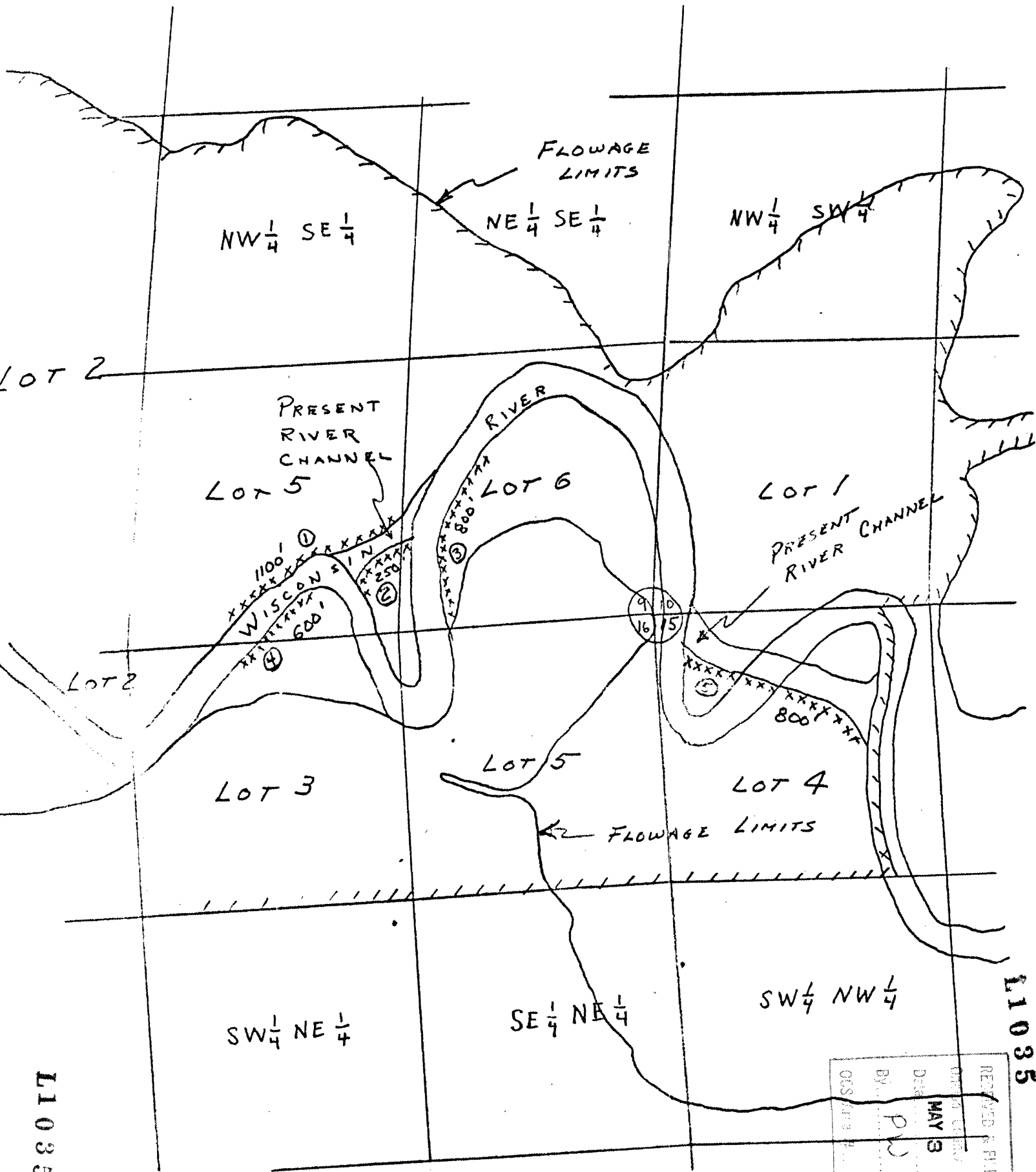
L1035

L1035

4-21-88

Although no detailed survey  
has been conducted, the  
present channel is shown.

Appendix A



L1035

L1035

|||| - Indicates boundaries of FUR FARM LICENSE No. 5450, A, M, AND 5450

④ 600' - Circled number indicates order of construction. Figure indicates approximate length of proposed dikes

RECEIVED & FILED
DATE MAY 3 1988
BY [Signature]
DEPT. OF CORRECTIONS & SUPERVISOR'S OFFICE
OCS/MS/RS