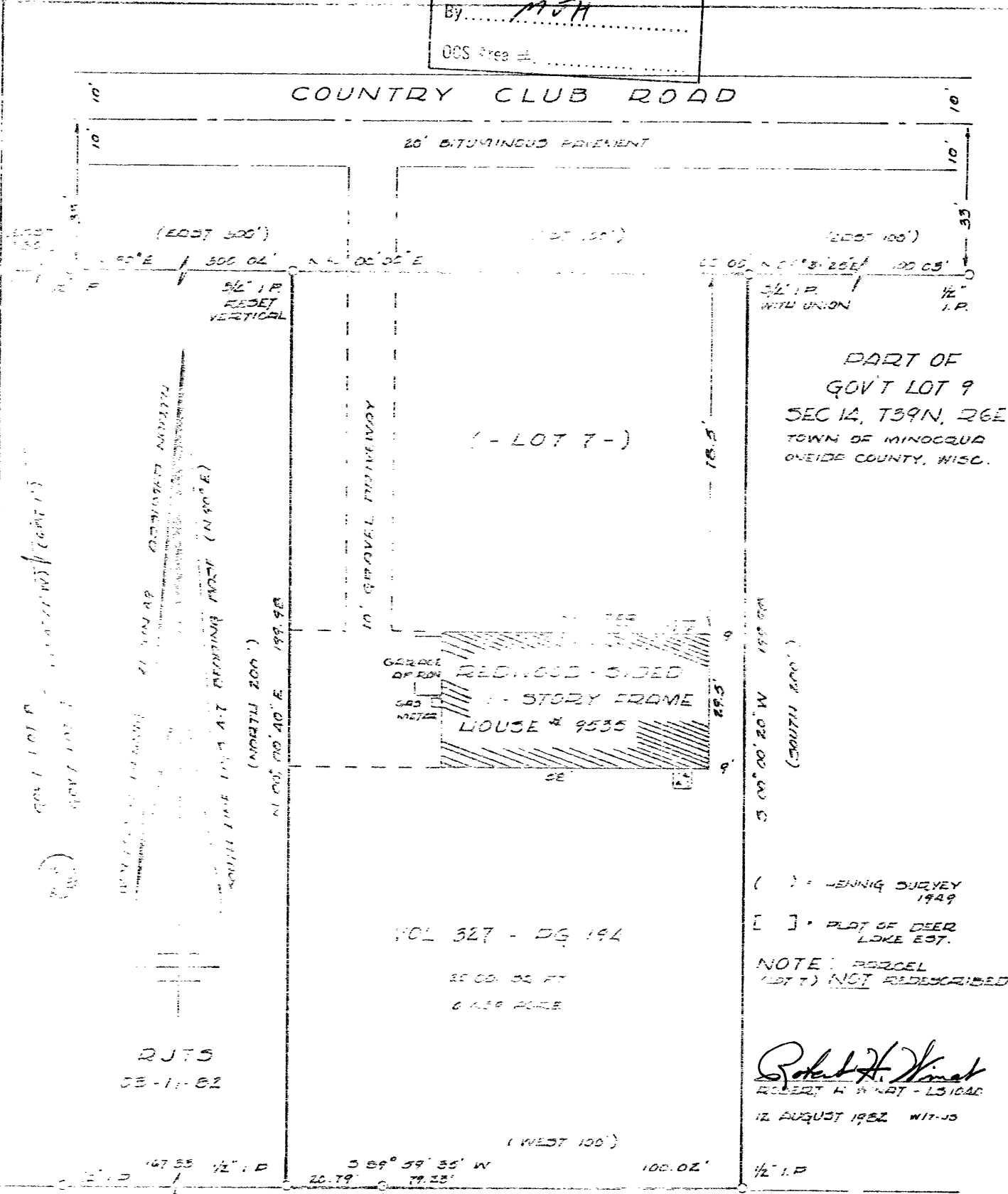


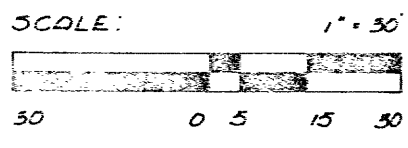
RECEIVED & FILED # 1.04
 Oneida County Surveyor's Office
 Date... FEB. 11 1966
 By... *MWH*
 GCS Area #...



RJTS
03-11-62

Robert H. Winat
 ROBERT H. WINAT - LS 1040
 12 AUGUST 1962 WIT-JS

PLAT OF DEER LAKE ESTATES



ROBINSON & ASSOC. INC.
 CIVIL ENGINEERS - SURVEYORS
 715 WEST PINE STREET
 EAGLE RIVER, WI. 54521
 PH. (715) 479-7161

104