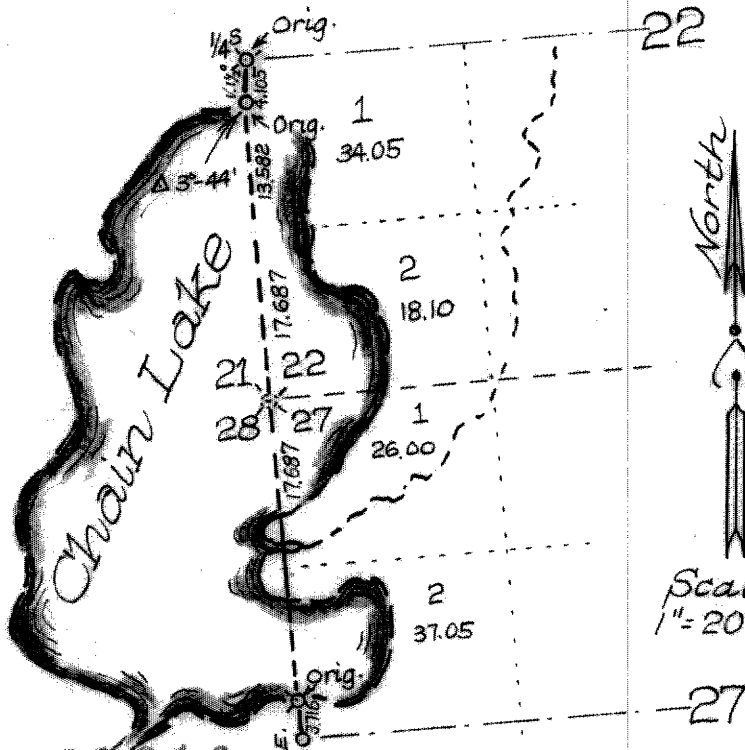


L1046

# Map of Survey

South half of Sec. Line between Sec's 21 & 22  
& Sec. Line between Sec's 27 & 28  
39-9

L1046



Scale:  
1" = 20 Chs

RECEIVED & FILED #  
 Oneida County Surveyor's Office  
 Date AUG. 10 1980  
 By *K.P.*  
 OCS Area #  
*W. M. Maine*  
 County Surveyor  
 Nov. 24<sup>th</sup>, 29<sup>th</sup> 1944

L1046  
 V.C. D.F.E.  
 17.687  
 17.687  
 17.687  
 17.687  
 28 27 Orig.  
 33 34

L1046