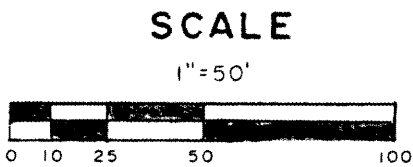
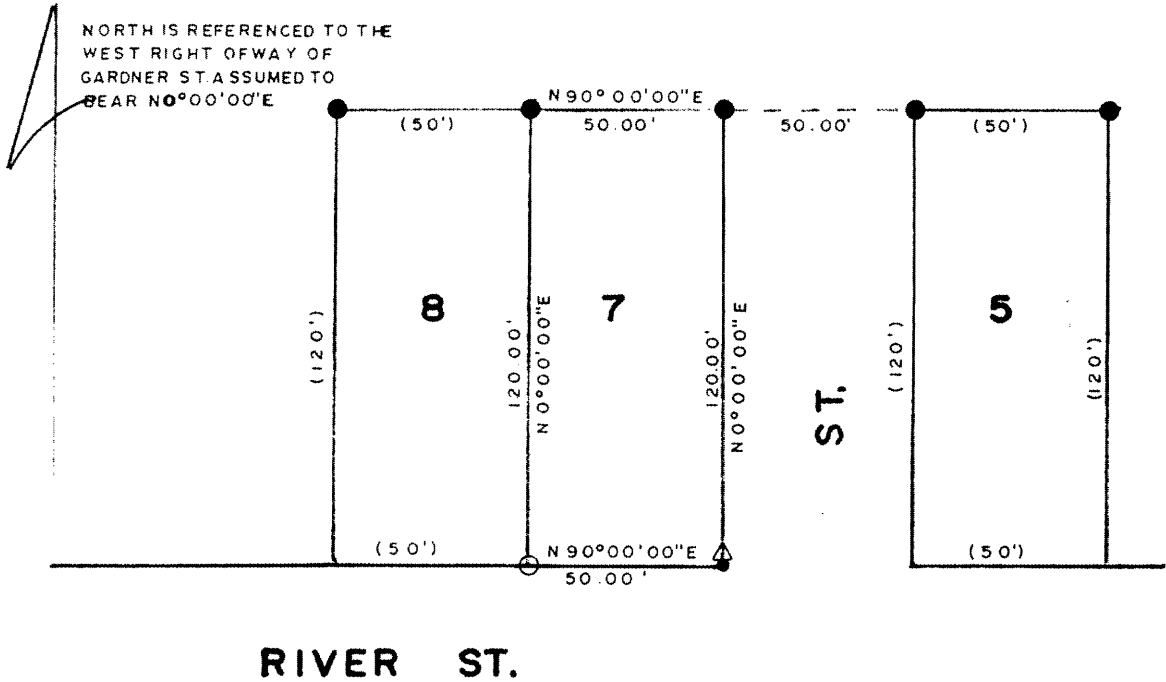


RECEIVED & FILED # **11058**  
 Oneida County Surveyor's Office  
 Date: **SEP. 27. 1989**  
 By: *Moff*  
 CCS Acre #

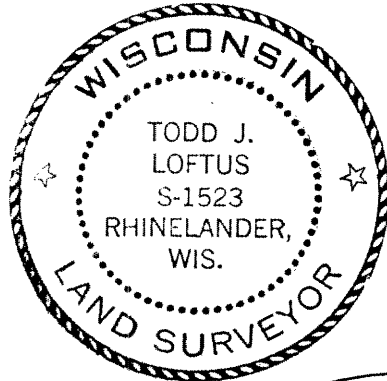
LOT 7, ONEIDA BLDG. CO. ADD. 31-37-9  
 CITY OF RHINELANDER, WI.

11058



**LEGEND**

- IRON PIPE by RIPCO
- IRON PIPE SET
- CHISLE MARK IN CEMENT
- △ RAILROAD SPIKE SET ON 2' OFFSET (DISTANCE OF RECORD)



*Todd J. Loftus*  
 7/10/89

058

I, Todd Loftus, hereby certify that I have surveyed the above parcel of land by the directions of Alloys Samz, that the above map is a true & correct representation of the lands surveyed to the best of my knowledge & belief.