

THIS PROPERTY FOR SALE BY

**G HOWARD OLMSTED
EAGLE RIVER WISCONSIN**

AND

**H S TUTTLE
EAGLE RIVER, WISCONSIN**

THE HEMLOCKS

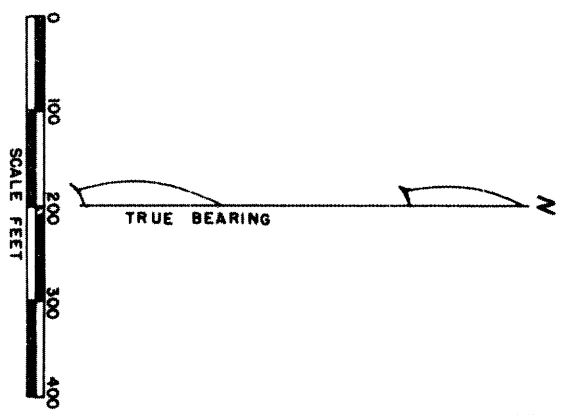
ON
UPPER CHAIN OF LAKES

○ DENOTES CONCRETE MON
SURVEYED & MAPPED 1947

H S Tuttle
PROF ENGR

1082

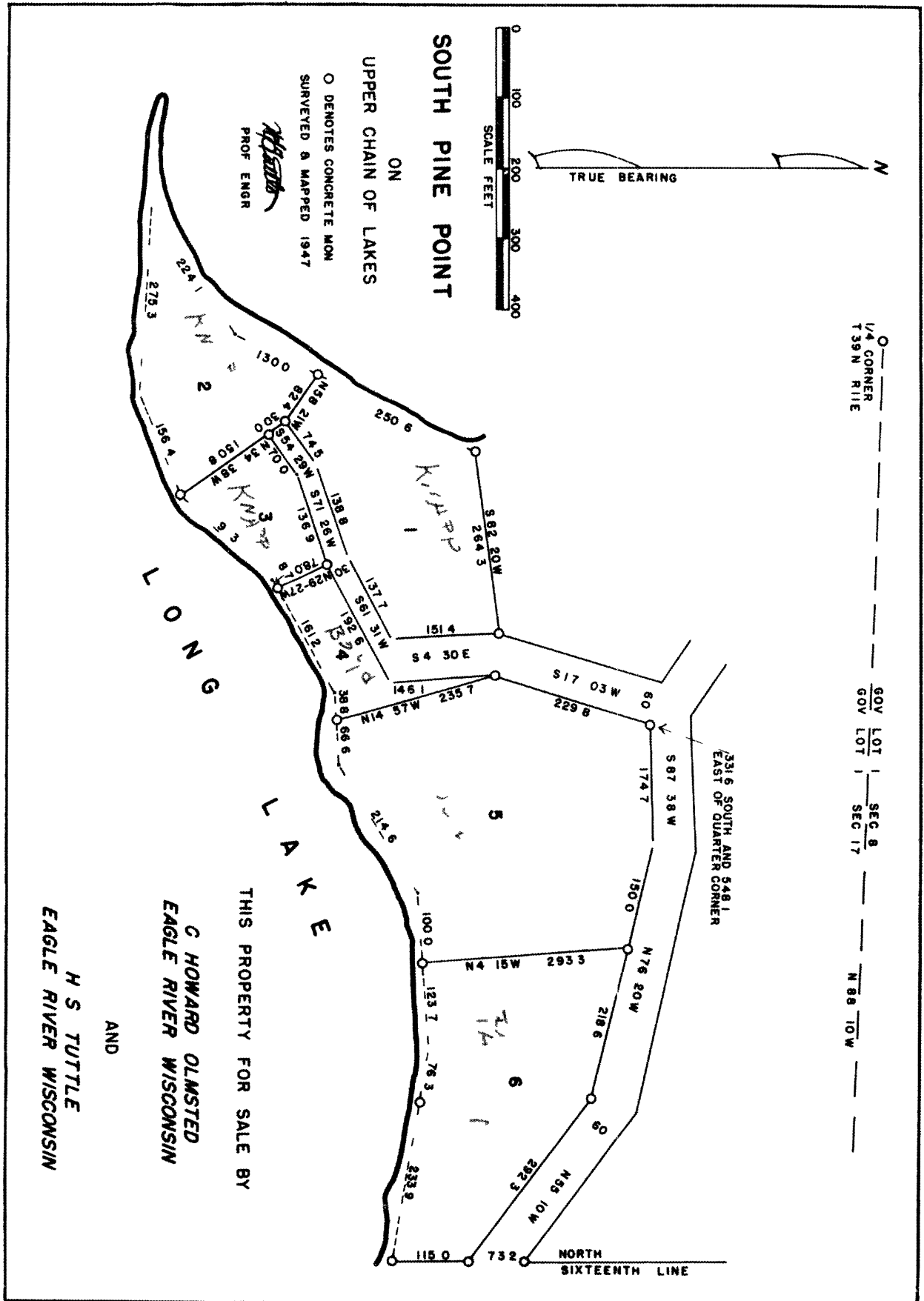
0 ———— 1/4 CORNER
 T 39 N R 1 E
 GOV LOT 17 | SEC 8
 GOV LOT 17 | SEC 17
 N 88 10 W



SOUTH PINE POINT

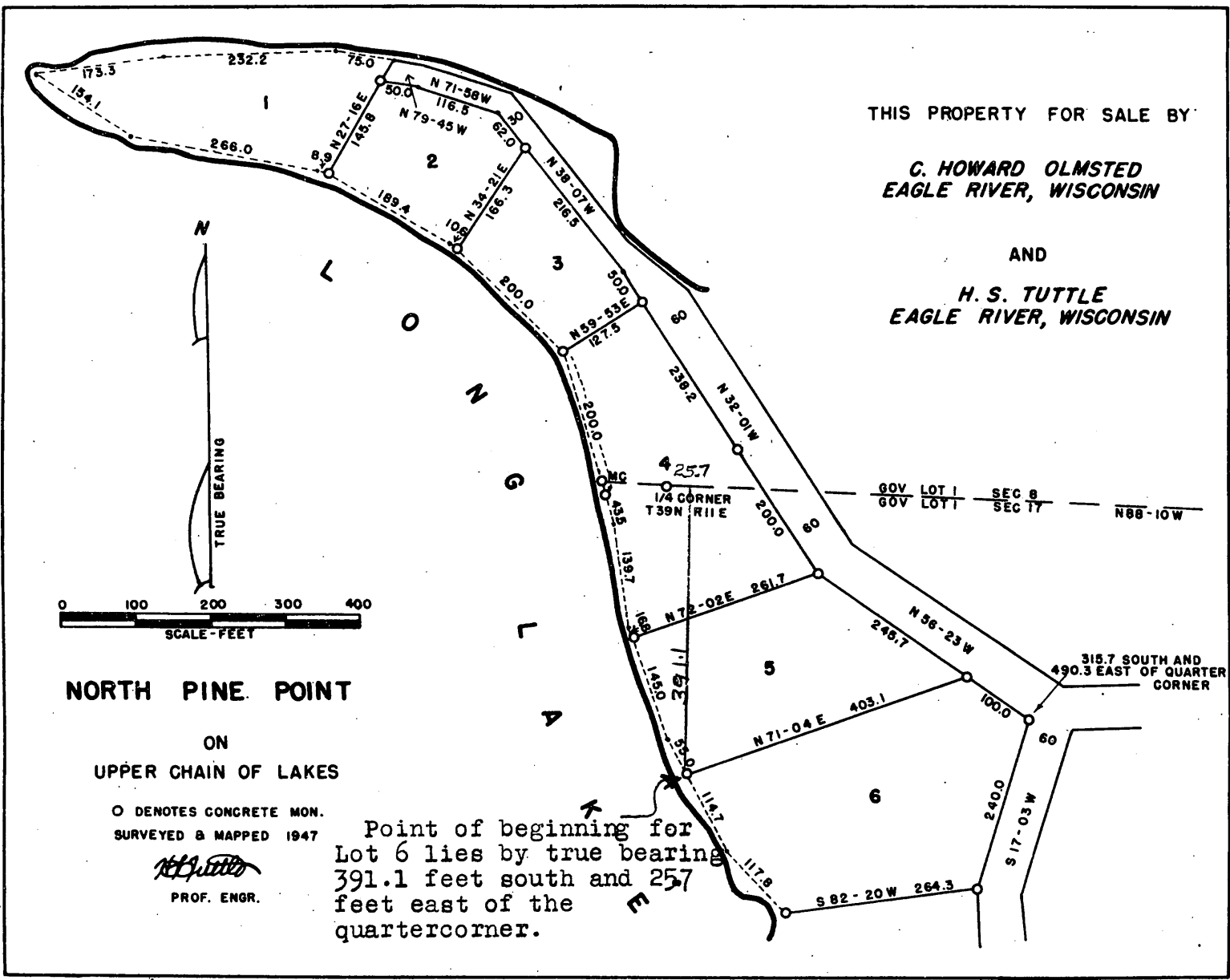
ON
 UPPER CHAIN OF LAKES

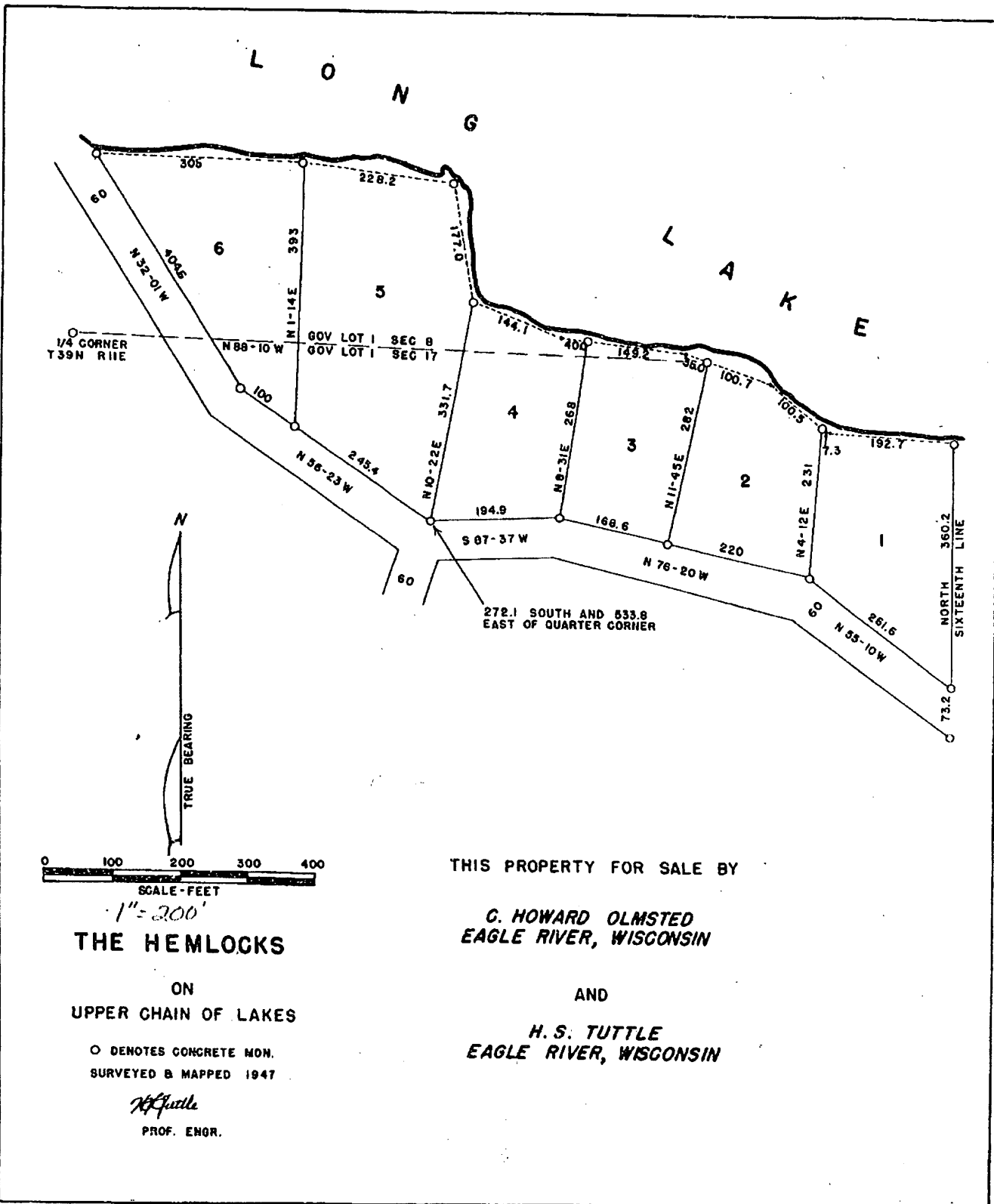
O DENOTES CONCRETE MON
 SURVEYED & MAPPED 1947
W. J. Tuttle
 PROF ENGR



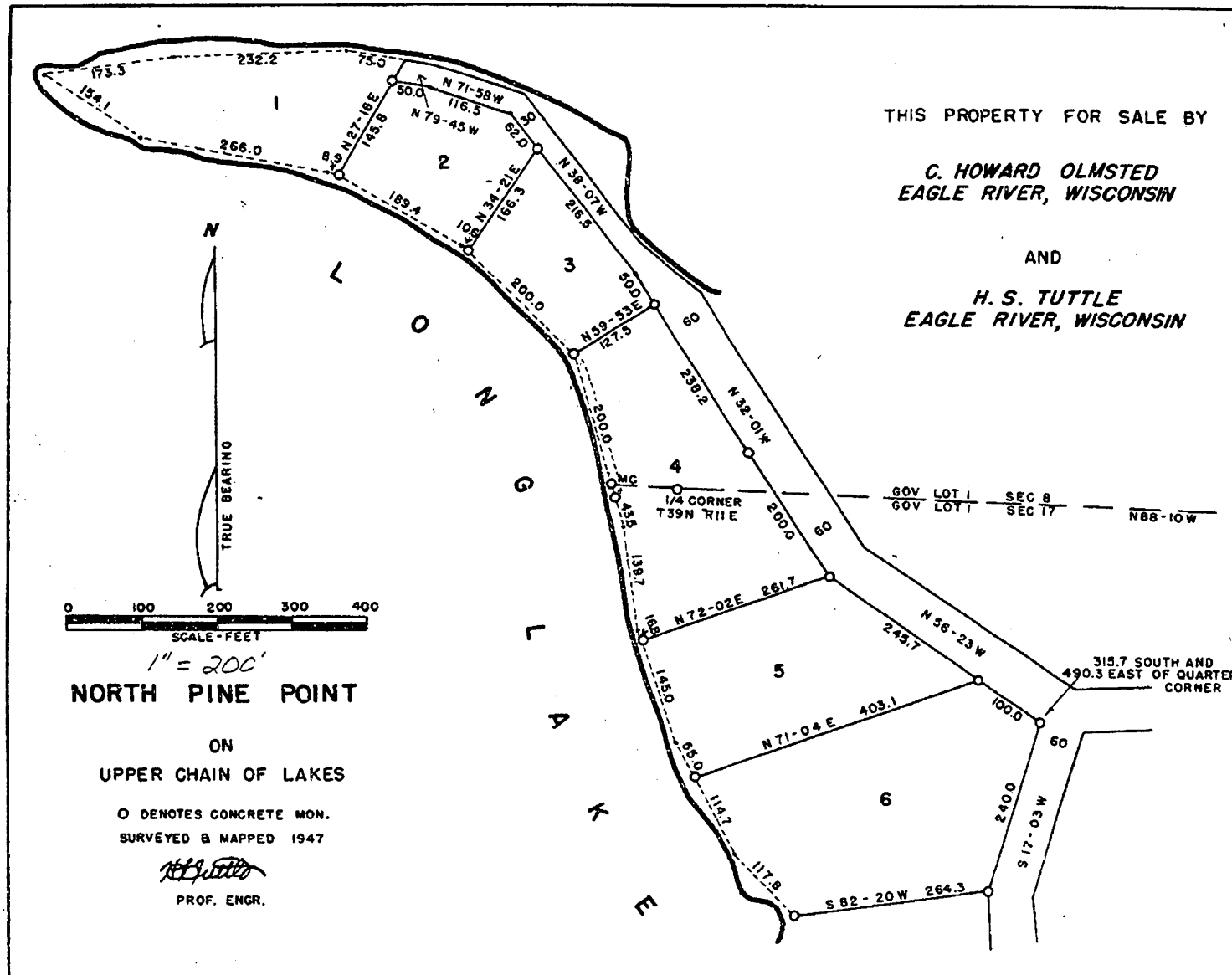
THIS PROPERTY FOR SALE BY
 C HOWARD OLMSTED
 EAGLE RIVER WISCONSIN
 AND
 H S TUTTLE
 EAGLE RIVER WISCONSIN

G.L. Sec 8-39-11





L 1082



L 1082

