

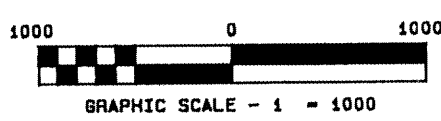
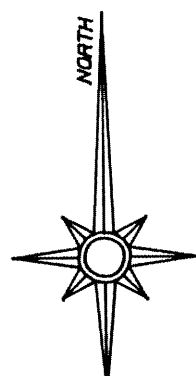
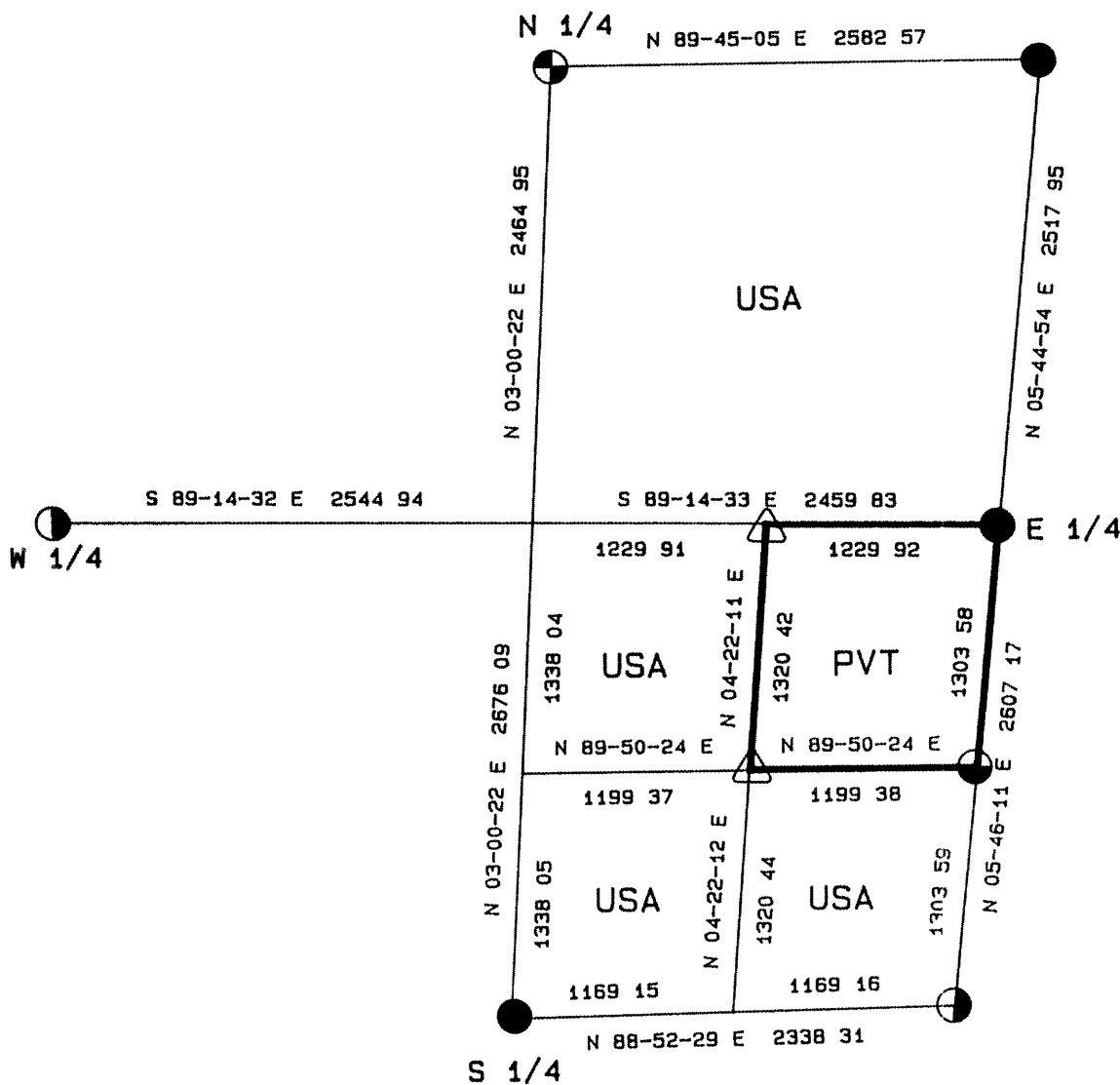
L1091

PLAT OF SURVEY FOR CERTIFIED LAND CORNER RESTORATION AND ESTABLISHMENT

BEING THE CORNERS FOR THE NE 1/4 OF THE SE 1/4
AND THE CORNERS ON THE PERIMETER OF THE EAST 1/2 OF THE SECTION







SECTION 2 TOWNSHIP 39 NORTH RANGE 11 EAST

COUNTY OF ONEIDA STATE OF WISCONSIN



RECEIVED & FILED #
On date of July 13 1990
D. L. C. A. f.
By J. F. -
OCS A a f

LEGEND

-  2 1/2 INCH DIAMETER ALUMINUM PIPE MONUMENT 60 INCHES LONG WITH AN ALUMINUM CAP
-  1 INCH DIAMETER ALUMINUM PIPE MONUMENT 36 INCHES LONG WITH AN ALUMINUM CAP
-  6 INCH DIAMETER CONCRETE MONUMENT WITH BRASS CAP
-  2 1/2 INCH DIAMETER GALVANIZED IRON PIPE MONUMENT 36 INCHES LONG WITH BRASS CAP
-  2 1/2 INCH DIAMETER GALVANIZED IRON PIPE MONUMENT 60 INCHES LONG WITH BRASS CAP
-  BOUNDARY LINE MARKED TO FOREST SERVICE STANDARD

L1091

L1091



Stock No 26273

T39N R11E, SECTION 2

page 2 of 4

SURVEY NOTES

This survey was made by the U S Department of Agriculture, Forest Service for the purpose of recovering, restoring establishing, marking, and perpetuating the corners and boundary lines of U S Government land on the perimeter and within Section 2 Township 39 North Range 11 East Fourth Principal Meridian, Oneida County State of Wisconsin as shown on the Plat map herewith

The U S Government land within Section 2 was acquired in 1932, 1938, 1950 and 1970

The original government subdivision of this township was made in 1859

The bearings between corner positions are true bearings as determined by reference to solar observations The accuracy of this survey exceeds the State requirement for closure of 1 in 3 000 Corners recovered or established by this survey are marked as described in the map legend Each monumented corner is referenced to blazed scribed painted and tagged bearing trees Tie bearings are magnetic and not corrected for declination

The field notes and a copy of the Plat of survey are on file in the Forest Service Supervisor's Office at Rhinelander Wisconsin

CORNERS RECOVERED AND RESTORED1 Northeast Section Corner

Corner position recovered as restored in 1939 by Dependant Resurvey by proportionate distance

Corner references recovered

R Pine	20"	N52 E	2 80 feet
Aspen	21"	S27 E	1 55 feet
Spruce	12"	S67 W	21 18 feet
R Pine	20"	N32 W	43 92 feet

2 East Quarter Corner

Corner position recovered as restored by Dependent Resurvey in 1941 by proportionate distance

Corner references recovered

R Pine	21"	N55 E	21 51 feet
R Pine	(stump)	N74 W	25 5 links

New Corner references

R Pine	21"	N16 W	24 05 feet
--------	-----	-------	------------

3 Southeast Section Corner

Corner position recovered as restored by Dependent Resurvey in 1926 from original evidence

Corner references recovered

R Pine	21"	N82 E	29 60 feet
W Birch	9"	S30 W	36 94 feet

New Corner references

R Pine	20"	N05 E	45 65 feet
Maple	7"	S21 E	38 62 feet

4 South Quarter Corner

Corner position recovered as restored by Dependent Resurvey in 1941 and 1975 by Jean Resvick

Corner references recovered

W Pine	12"	N21 W	53 0 feet
Maple	8"	S62 E	50 58 feet
W Pine	12"	S37 W	29 49 feet
Wood sign post		South	1 00 feet

16017

16017

Stock No 26273

T39N R11E SECTION 28

page 3 of 4

5 West Quarter Corner

Corner position recovered as restored by Dependent Resurvey in 1941 from remains of an original bearing tree

Corner references recovered

Spruce	(snag)	N46°E	14 70 feet
Spruce	(snag)	S36 W	21 48 feet

New Corner references

Spruce	8"	S09°E	9 21 feet
Tamarack	10"	N70 W	18 12 feet
Steel sign post		Northwest	0 50 feet

6 North Quarter Corner

Corner position recovered as restored by Dependent Resurvey in 1939, and in 1987 by Favorite Survey

Corner references recovered

Cedar	5"	N75 E	9 13 feet
Tamarack	8"	S27°W	48 19 feet
Tamarack	10"	N81°W	3 94 feet
Tamarack	9"	N02°W	49 49 feet
Wood sign post		West	2 00 feet

CORNERS ESTABLISHED1 Center-East Sixteenth Corner

Corner position established at midpoint and on line between the Center-Quarter Corner and the East Quarter Corner

Corner references

R Pine	11"	S57 E	30 20 feet
W Pine	9"	S57 W	31 09 feet
Steel sign post		South	9 00 feet

2 Southeast Sixteenth Corner

Corner position established at the intersection of straight lines between opposing sixteenth corner positions on the perimeter of the southeast quarter of the section

Corner references

No suitable bearing trees were available			
Steel sign post		Northeast	1 00 feet

3 South Sixteenth Corner between Sections 1 and 2

Corner position established at midpoint and on line between the East Quarter and Southeast Section Corners

Corner references

W Pine	6"	N70 E	10 66 feet
W Pine	8"	S79 W	30 71 feet
Steel sign post		South	0 50 feet

16017

16017



Stock No 26273

T39N R11E SECTION 2

page 4 of 4

SURVEYOR'S AFFIDAVIT

State of Wisconsin)
County of Oneida)

I William B Cochrane Land Surveyor, U S Forest Service, and a registered Land Surveyor in the State of Wisconsin, hereby certify that I have surveyed and subdivided Section 2 Township 39 North, Range 11 East Fourth Principal Meridian, State of Wisconsin

The plat map and survey notes herewith are a correct representation of the land surveyed and divided I have surveyed and subdivided said section in accordance with the rules for the survey of the public lands and with the statutes of the State of Wisconsin



William B Cochrane
Land Surveyor U S D A Forest Service
R L S State of Wisconsin
Certificate S-1107

Date of Survey 1988

Survey requested by

Sam Gordon
District Ranger

4/5/90
Date

16017

16017