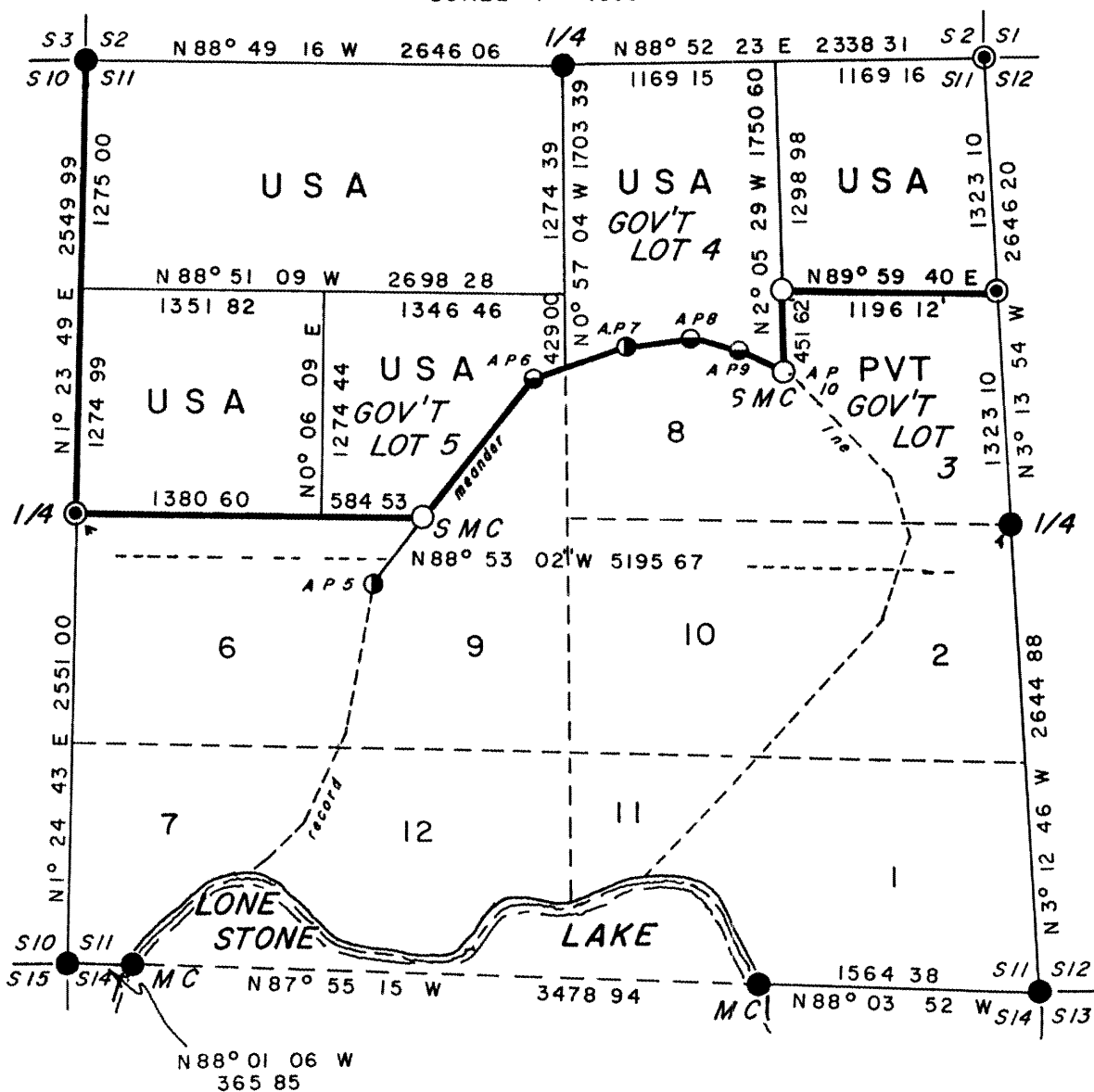
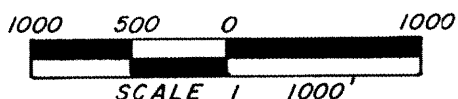


PLAT OF SURVEY U S GOVERNMENT LAND

BEING THE N 1/2 OF THE NW 1/4, THE SW 1/4 OF THE NW 1/4,
GOV'T LOT 5, GOV'T LOT 4, & THE NE 1/4 OF THE NE 1/4,
SECTION II, TOWNSHIP 39 NORTH, RANGE II EAST,
FOURTH PRINCIPAL MERIDIAN, ONEIDA COUNTY, WISCONSIN



—LEGEND—

- 6 DIA G L O CONCRETE MONUMENT BRASS CAP
- ⊙ 2 DIA IRON PIPE BRASS CAP MONUMENT
- 1 DIA x 60 U S F S ALUMINUM MONUMENT SET THIS SURVEY
- 4 DIA G L O CONCRETE MONUMENT BRASS CAP
- 1 DIA G L O IRON PIPE BRASS CAP MONUMENT
- UNSURVEYED LINES
- BOUNDARY U S GOVERNMENT LAND

NOTE BEARING & DIST FROM A P 5 THRU
A P 10 SHOWN ON DETAIL MAP ON
PAGE 2

CONVERSION FACTORS
FEET TO METERS 0.304801
METERS TO FEET 3.280833

RECEIVED & FILED #	On da County Se. yr. file
By	Date
JCS Arda #	JUL 16 1980

T.T.G.

SURVEY NOTES

This survey was made by Soder Surveying pursuant to United States Department of Agriculture Forest Service Contract #53-56A6-9-00289 Cadastral Survey for the purpose of recovering restoring establishing marking and perpetuating the corners and boundary lines of the U^S Government land on the perimeter and within Section 11 Township 39 North Range 11 East Fourth Principal Meridian Oneida County Wisconsin as shown on plat herewith

The original Government subdivision survey of this Township was made by William F Daugherty in 1859

A dependent resurvey of the township was executed under the direction of the General Land Office in 1941 In connection with the dependent resurvey it was found that the recorded meander line of the lake in Sections 11 14 and 15 as represented by the original township plat was meandered with reasonable accuracy through Sections 14 and 15 but was grossly erroneous through Section 11

A dependent resurvey of the omitted land in Section 11 as a Fixed and Limiting Boundary by the General Land Office was executed in 1943 Monuments established in these surveys were recovered and this along with the notes of the survey are the basis for this survey

The corner positions recovered restored and established by this survey are marked by the monument described in the map legend

The corner positions established were located to an accuracy of 1 part in 3000

The bearings between corner positions were established by tying to the survey of Section 15 T39N R11E by John Fisher for the U S Department of Agriculture Forest Service in 1984 The bearings in Section 15 by John Fisher were determined by solar observation

The field notes of this survey and a copy of this plat are on file in the Forest Supervisor's Office in Rhineland WI

CORNERS RECOVERED

1 Corner to Sections 11 10 3 & 2

Corner is monumented by a 6 dia round concrete monument with General Land Office brass cap tamped to identify corner

Corner References

Nail in N Pine	9	S52 ^o W	7 66 feet
Nail in Maple	8	N72 ^o E	7 07 feet
Nail in W Pine	8	S87 ^o W	43 36 feet
Nail in W Pine	36	S1 ^o E	5 04 feet
Steel Sign Post		Northeast	1 0 feet

2 Corner to Sections 11 & 2

Corner is monumented by a 6 dia concrete monument with General Land Office brass cap stamped to identify corner

Corner References

Nail in Maple	5	S62 ^o E	50 74 feet
Nail in W Pine	14	S37 ^o W	2 ^c 05 feet
Nail in Oak	8	S87 ^o W	4 ^c 75 feet
Nail in W Pine	20	Last	4 ^c 03 feet
Steel Sign Post		Northeast	6 80 feet

3 Corner to Sections 11 1 2 & 12

Corner is monumented by a 2 dia iron pipe with General Land Office brass cap stamped to identify corner

Corner References

Nail in N Pine	21	N82 ^o L	29 60 feet
Nail in W Birch	9	S30 ^o W	36 94 feet
Nail in N Pine	20	N5 ^o E	45 65 feet
Nail in Maple	7	S21 ^o E	38 62 feet

4 Corner to Sections 11 & 12

Corner is monumented by a 6 dia concrete monument with General Land Office brass cap stamped to identify corner

Corner References

Nail in N Pine	16	S20 ^o L	20 15 feet
Nail in N Pine	18	S18 ^o W	18 92 feet
Nail in N Pine	15	N53 ^o W	16 35 feet
Nail in Maple	12	N18 ^o W	19 54 feet
Steel Sign Post		East	0 50 feet

5 Corner to Sections 11 12 13 & 14

Corner is monumented by a 6 dia concrete monument with General Land Office brass cap stamped to identify corner
Corner restored by J H Fisher in 1984

Corner References

Nail in N Pine	20	S66°E	4 70 feet
Nail in N Pine	9	N25°E	18 44 feet
Nail in N Pine	10	S32°W	11 55 feet
Nail in N Pine	12	N27°W	15 70 feet
Steel Sign Post		North	1 0 feet

6 Meander Corner to Sections 11 & 14

Corner is monumented by a 6 dia concrete monument with General Land Office brass cap stamped to identify corner
Corner restored by J H Fisher in 1984

Corner References

Nail in N Pine	16	S35°E	14 80 feet
Nail in N Pine	14	S82°E	28 00 feet
Nail in N Pine	13	N39°E	52 20 feet
Nail in N Pine	12	N17°E	28 60 feet
Steel Sign Post		Southeast	0 60 feet

7 Meander Corner to Sections 11 & 14

Corner is monumented by a 6 dia concrete monument with General Land Office brass cap stamped to identify corner
Corner restored by J H Fisher in 1984

Corner References

Nail in W Pine	16	N60°W	14 02 feet
Nail in W Pine	22	S35°W	11 68 feet
Nail in R Maple	14	N81°W	4 00 feet
Nail in W Pine	18	N5°W	31 25 feet
Steel sign Post		Northwest	1 50 feet

8 Corner to Sections 11 14 15 & 10

Corner is monumented by a 6 dia concrete monument with General Land Office brass cap stamped to identify corner
Corner restored by J H Fisher in 1984

Nail in N Pine	6	S44°W	29 72 feet
Nail in N Pine	10	S87°W	28 70 feet
Nail in R Maple	8	N62°W	11 40 feet
Nail in W Pine	9	N23°E	27 10 feet
Steel Sign Post		East	1 20 feet

9 Corner to Sections 11 & 10

Corner is monumented by a 2 dia iron pipe with a General Land Office brass cap stamped to identify corner

Corner References

Nail in Tamarack	11	N69°E	9 87 feet
Nail in Tamarack	7	N49°W	37 69 feet
Nail in Tamarack	6	S55°W	35 86 feet
Nail in Tamarack	9	S3°E	58 21 feet
Steel Sign Post		Northeast	1 0 feet

10 North Sixteenth Corner to Sections 11 & 12

Corner is monumented by a 2 iron pipe with U S Forest Service brass cap stamped to identify corner

Corner References

Maple	9	N32°W	20 16 feet
W Birch	10	S7°E	22 07 feet
Steel sign Post		Southeast	1 0 feet

11 Angle Point #5 to Section 11

Corner is monumented by a 1' dia iron pipe with a General Land Office brass cap stamped to identify corner

Corner References

Nail in Spruce	8"	N83°W	5 24 feet
Nail in Spruce	11"	S47°E	22 81 feet
Steel Sign Post		Northeast	1 0 feet

12 Angle Point #6 to Section 11

Corner is monumented by a 4" dia concrete monument with a General Land Office Brass cap stamped to identify corner

Corner References

Nail in Maple	12"	S37°E	29 60 feet
Nail in W Pine	30"	S69°W	16 33 feet
Steel Sign Post		Northwest	0 90 feet

13 Angle Point #7 to Section 11

Corner is monumented by a 1" dia iron pipe with a General Land Office brass cap stamped to identify corner

Corner References

Nail in Y Birch	9'	N37°E	48 53 feet
Nail in Maple	9"	S75°W	77 59 feet
Steel Sign Post		Northeast	0 80 feet

14 Angle Point #8 to Section 11

Corner is monumented by a 4" dia concrete monument with a General Land Office brass cap stamped to identify corner

Corner References

Nail in Cedar	14	S64 E	15 50 feet
Nail in Spruce	8"	S1°W	27 53 feet
Steel Sign Post		Northeast	0 30 feet

15 Angle Point #9 to Section 11

Corner is monumented by a 4" dia concrete monument with a General Land Office brass cap stamped to identify corner

Corner References

Nail in W Birch	11"	N20°L	11 57 feet
Nail in Tamarack	8"	S20°E	15 09 feet
Steel Sign Post		Northeast	0 30 feet

16 Angle Point #10 to Section 11

Corner is monumented by a 1" dia iron pipe with a General Land Office brass cap stamped to identify corner

Corner References

Nail in Cedar	8"	N64°E	15 70 feet
Nail in Tamarack	8"	S67 W	17 20 feet
Nail in Tamarack	7"	N81°W	8 58 feet
Steel Sign Post		Northeast	0 30 feet

CORNERS ESTABLISHED

1 Corner common to Gov't Lot 4 N7¹/₂-N1¹/₂ & Gov't Lot 3 to Section 11

Corner is monumented by a 1" dia aluminum pipe 5 feet long with aluminum cap stamped to identify corner
Corner is placed at the intersection of the one-sixteenth lines that were run on mean bearings

Corner References

Nail in Cedar	15'	S84 W	47 91 feet
Nail in W Birch	6	N2 E	2 54 feet
Steel Sign Post		Northeast	0 80 feet

2 Special Meander Corner to Section 11

Corner is monumented by a 1" dia aluminum pipe 5 feet long with aluminum cap stamped to identify corner. Corner is placed at the intersection of the East one-sixteenth line and the line between Angle Point 9 & Angle Point 10

Corner References

Nail in Tamarack	5'	S72°W	39.11 feet
Nail in Tamarack	6"	N22°W	11.78 feet
Steel Sign Post		Northeast	0.75 feet

3 Special Meander Corner to Section 11

Corner is monumented by a 1" dia aluminum pipe 5 feet long with aluminum cap stamped to identify corner. Corner is placed at the intersection of the East-West $\frac{1}{4}$ line and the line between Angle Point #5 & Angle Point #6

Corner References

Nail in W Pine	6"	N16°E	27.59 feet
Nail in Tamarack	4'	N51°E	9.79 feet
Steel Sign Post		Northeast	0.60 feet

SURVEYOR'S AFFIDAVIT

State of Wisconsin)
County of Oneida)^{ss}

I Kip W Soder registered land surveyor in the State of Wisconsin hereby certify that I have surveyed subdivided and run the boundary lines shown hereon and set the established corners in Section 11 Township 39 North Range 11 East Fourth Principal Meridian Oneida County Wisconsin in accordance with the rules of survey of the public lands and with the statutes of the State of Wisconsin The plat map and survey notes are an accurate representation of the corners recovered and established



Kip W Soder
Soder Surveying
Kip W Soder
R L S State of Wisconsin
Certificate No S-1731

Date of Survey February 1989 - July 1989

Survey requested by Pamela Soder 1/5/90
District Ranger Date