

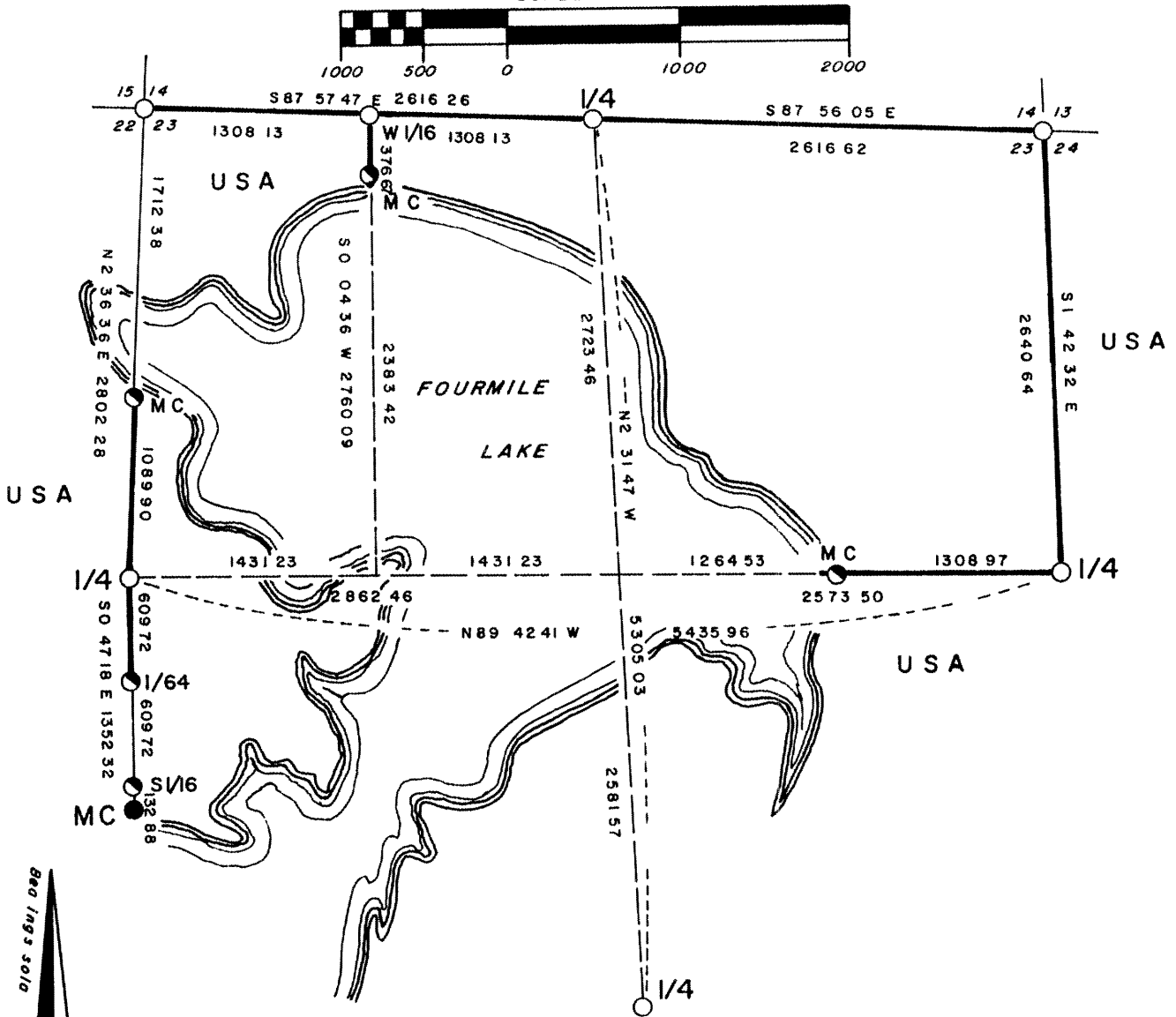
L1097

# PLAT OF SURVEY U S GOVERNMENTLAND

Being SE 1/4 & GOV'T LOT 1  
Section 23

Township 39 North, Range 11 East, Fourth Principal Meridian  
County of Oneida, State of Wisconsin

SCALE 1 1000



**NORTHCOUNTRY SURVEYORS**

### LEGEND

- 6 round concrete monument with brass tablet found in place
- 2 iron pipe with brass tablet found in place
- Corner position marked by 2 inside diameter 3 long aluminum pipe capped with 3 diameter aluminum tablet stamped to identify corner
- Boundary U S Government Land

*John H Fisher*  
 John H Fisher R L S S 836

Dated 12/19/84

RECEIVED & FILED #	
On our Surveyors Office	
D. H. JUL 10 1990	
By	YF
US Area #	

Drawn by Dennis B Roberts

L1097

L1097

L1097



Stock No 26273

SURVEY NOTES

This survey was made by North Country Surveyors pursuant to United States Department of Agriculture, Forest Service Contract "No 53-56A6-4-00035, Cadastral Survey" for the purpose of recovering, restoring, establishing, marking and perpetuating the corners and boundary lines of the U S Government land on the perimeter and within Section 23, T39N, R11W, Fourth Principal Meridian, Oneida County, Wisconsin as shown on the plat herewith

The original Government subdivision survey of this Township was made by William E Daugherty in 1859

Two separate Dependent Resurveys have been made tying and establishing various corners of Sections 23 One of those resurveys was made by Guy R Veal, U S Cadastral Engineer and dated June 21, 1926 This survey was made to define omitted lands within Section 23 The second resurvey affecting the area is a resurvey of the East half of T39N, R11E, and was completed by Hugh D Crawford, Cadastral Surveyor on October 18, 1941 Monuments established in these surveys were recovered and this along with the notes of the survey are the basis for this survey

Bearings between corner positions are true bearings by reference to a solar observation All distances shown thereon are in feet and hundredths of feet The control traverse was measured by use of electronic distance measuring equipment Corners recovered, restored and established by this survey are marked by the monument described in the map legend Each monumented corner position is referenced to blazed and scribed bearing trees and described objects

CORNERS RECOVERED

- 1 The Corner to Section 14, 15, 22 and 23

Corner is monumented by a 2" iron pipe capped with a brass tablet as established by the Bureau of Land Management in the 1926 Dependent Resurvey

## Corner References

Nail in Hemlock	15"	N58°W	27 80 feet
Nail in White Pine	22"	N23°W	24 00 feet
Nail in Cedar	9"	S42°W	32 35 feet
Nail in Hemlock	22"	S82°E	53 60 feet
Steel sign post		East	1 5 feet

- 2 The corner to Sections 13, 14, 23 and 24

Corner is monumented by a 2" iron pipe capped with a brass tablet as established by the Bureau of Land Management in the 1926 Dependent Resurvey



Stock No 26273

## Corner References

Nail in Red Pine	18"	N46°W	66 70 feet
Nail in Black Spruce	7"	S66°W	16 25 feet
Nail in Tamarack	6"	S10°W	24 47 feet
Nail in Black Spruce	5"	S54°E	5 00 feet
Steel sign post		South	0 7 feet

## 3 Quarter Corner to Sections 14 and 23

Corner is monumented by a 2" iron pipe capped with a brass tablet as established by the Bureau of Land Management in the 1926 Dependent Resurvey

## Corner References

Nail in Hemlock	14"	N24°W	16 28 feet
Nail in Cedar	6"	N45°E	13 45 feet
Nail in Cedar	7"	S11°W	35 75 feet
Nail in Cedar	6"	S13°E	8 75 feet
Wood sign post		N25°E	1 foot

## 4 Quarter Corner to Sections 22 and 23

Corner is monumented by a 2" iron pipe capped with a brass tablet as established by the Bureau of Land Management in the 1926 Dependent Resurvey

## Corner References

Nail in White Pine	26"	N38°E	19 88 feet
Nail in White Pine	8"	N81°E	29 00 feet
Nail in Red Maple	13"	N47°W	16 83 feet
Nail in White Birch	14"	N17°W	18 40 feet
Wood sign post		N65°W	0 9 feet

## 5 Quarter Corner to Sections 23 and 26

Corner is monumented by a 2" iron pipe capped with a brass tablet as established by the Bureau of Land Management in the 1926 Dependent Resurvey

## Corner References

Nail in Red Pine	18"	S 3°W	53 1 feet
Nail in White Pine	9"	S39°W	56 9 feet
Nail in White Pine	10"	N64°W	44 6 feet
Nail in Red Maple	12"	N28°W	37 3 feet
Wood sign post		N65°E	1 4 feet

## 6 Quarter Corner to Sections 23 and 24

Corner is monumented by a 2" iron pipe capped with a brass tablet as established by the Bureau of Land Management in the 1926 Dependent Resurvey

Stock No 26273

## Corner References

Nail in Black Spruce	9'	S75°W	21 75 feet
Nail in White Pine	12"	S60°E	26 30 feet
Nail in White Spruce	11'	S19°E	39 25 feet
Nail in Black Spruce	9'	N64°W	42 25 feet
Steel sign post		N10°E	1 5 feet

## 7 South Meander Corner to Sections 22 and 23

Corner is monumented by a 6" diameter concrete monument with a brass tablet established by the Bureau of Land Management in the 1941 Dependent Resurvey

## Corner References

Nail in Red Pine	17"	N19°W	22 0 feet
Nail in Red Pine	14'	N41°E	38 2 feet
Nail in White Pine	7"	N69°W	18 2 feet
Nail in Red Pine	16"	S64°E	3 9 feet
Steel sign post		S 8°W	1 5 feet

## 8 West Sixteenth Corner to Sections 14 and 23

Corner is monumented with a 2' diameter iron pipe with a Forest Service brass cap

## Corner References

Nail in Oak	11"	N80°W	8 8 feet
Nail in White Birch	8"	N47°E	16 2 feet
Nail in White Pine	9"	S20°E	28 3 feet
Wood sign post		N80°E	1 5 feet

CORNERS ESTABLISHED1 Special Meander Corner - Section 22 and 23

Corner established on line on the southerly shore of Fourmile Lake between the West Quarter Corner and Northwest Section Corner of Section 23

Corner is a 2" aluminum pipe three feet long with a 3" diameter aluminum tablet stamped to identify the corner

## Corner References

Nail in Red Pine	11"	N75°W	14 31 feet
Nail in White Pine	11'	N 7°W	16 04 feet
Nail in Red Pine	12"	S58°E	23 67 feet
Steel Sign post		North	1 0 feet

Stock No 26273

2 One Sixty Fourth Corner to Sections 22 and 23

Corner position established at midpoint and on line between the West Quarter Corner and the South One Sixteenth Corner of Section 23

Corner is a 2" aluminum pipe three feet long with a 3" diameter aluminum tablet stamped to identify the corner

## Corner References

Nail in Sugar Maple	9"	N12°E	19 2 feet
Nail in Red Pine	6"	N38°W	22 1 feet
Nail in Sugar Maple	17'	N80°W	77 7 feet
Steel sign post		North	7 2 feet

3 South One Sixteenth Corner to Sections 22 and 23

Corner position established at intersection of Section 22 with a line running easterly from the Center South One Sixteenth on a weighted mean bearing between the east half of the East-West One Quarter Line and the line from the South Quarter Corner to the Meander Corner on the West shore of Big Fork Lake

Corner is a 2" aluminum pipe three feet long with a 3" diameter aluminum tablet stamped to identify the corner

## Corner References

Nail in Sugar Maple	5"	N84°W	8 6 feet
Nail in Red Maple	7"	S45°W	7 1 feet
Nail in Sugar Maple	7"	N53°E	12 2 feet
Steel sign post		North	1 2 feet

4 Special Meander Corner on East-West Quarter Line

Corner position established on Easterly Shore of Fourmile Lake on line between the East and West One Quarter Corners of Section 23

Corner is a 2' aluminum pipe three feet long with a 3" diameter aluminum tablet stamped to identify the corner

Nail in Cedar	7'	1°W	7 6 feet
Nail in Cedar	7"	S71°E	17 6 feet
Nail in Cedar	5'	N 8°E	8 3 feet
Steel sign post		West	1 2 feet
1' iron pipe		162°E	1 3 feet

Stock No 26273

5 Special Meander Corner West Sixteenth Line - Section 23

Corner position established on the Northerly shore of Fourmile Lake on line between the West One Sixteenth and Center West One Sixteenth Corners of Section 23

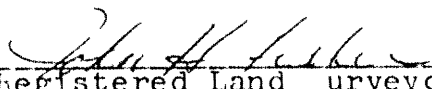
## Corner References

Nail in Red Maple	10'	N72°W	13 0 feet
Nail in Cedar	8'	N37°E	20 7 feet
Steel sign post		South	1 3 feet

SURVLYOP'S AFFIDAVIT

State of Wisconsin)  
County of Oneida )ss


I, John H Fisher, Land Surveyor, registered in the State of Wisconsin, hereby certify that I have surveyed and subdivided Section 23, T39N, R11E, Fourth Principal Meridian, County of Oneida, State of Wisconsin, in accordance with the rules of the survey of public lands and with the statutes of the State of Wisconsin. The plat map and survey notes are an accurate representation of the corners recovered and established

  
Registered Land Surveyor State of  
Wisconsin

Dated December 19, 1984

Certificate No E-836

Date of Survey April - December, 1984

Plat ready for filing   
District Ranger