

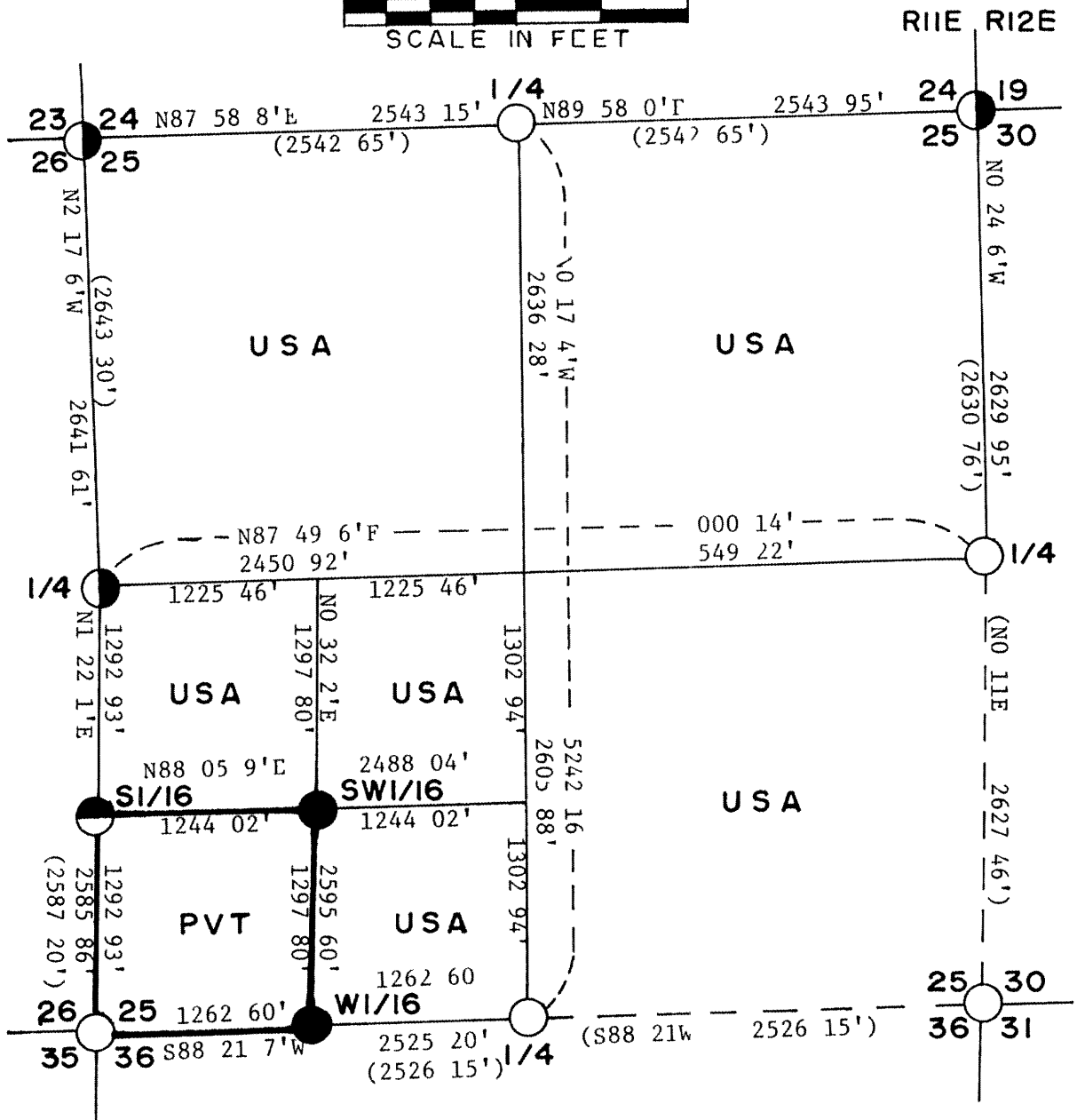
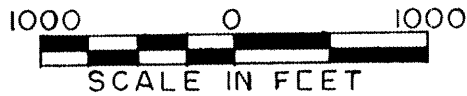


Stock No 26273

PLAT OF SURVEY U S GOVERNMENT LAND

Being All Except The SW1/4, SW1/4 of Section 25, Township 39 North,
Range 11 East, Fourth Principal Meridian

ONEIDA COUNTY, WISCONSIN



LEGEND

- Found Dependent Resurvey Monument by G I O 6 x 24 Concrete Cylinder With Brass Cap
- Found Dependent Resurvey Monuments by G L O 2 x 36 Iron lost with Brass Cap
- Set 1 x 36 Drive Type Aluminum Monument
- Set 1 x 60 Drive Type Aluminum Monument
- Boundary Line Marked to Standard
- USA** U S Government Lands

Note (xxx xx) distances by

G L O in 1941
 P L E V E D & F I E R S
 JUL 16 1980
 Conversion Factor
 Meters to Feet 1.09361
 Feet to Meters 0.9144

3.28083
304801

11098



Stock No 26273

Sheet 2 of 4

SURVEY NOTES

This survey was made by Milo E Stefan and party pursuant to the United States Department of Agriculture Forest Service Contract #5 -56A6-8-00187 Cadastral Survey' for the purpose of subdividing establishing corners and marking the boundaries of U S Government Lands on the perimeter and within Section 25 Township 39 North Range 11 East Fourth Principal Meridian Oneida County Wisconsin as shown on the plat map herewith

The original government subdivision survey of this township was done in 1859 by William Daugherty The east boundary of the section was originally surveyed by Alfred Millard in 1858 Subsequent surveys by the U S Department of Interior General Land Office were done in 1926 and 1941 These G L O corners were recovered and used as the control for this survey

The U S Government acquired title to the lands in Section 25 from 1930 thru 1933

Bearings between corner positions are true bearings by reference to a solar observation All distances shown hereon are in feet and hundredths of feet The control traverse was measured with an electronic distance measuring instrument Corners recovered restored and established by this survey are marked by the monument described in the map legend Each monumented corner position is referenced to blazed and scribed bearing trees as described as "corner references"

CORNERS RECOVERED AND RESTORED1 Section Corner to Sections 23 24 25 and 26 T39N R11E

Position found marked by a GLO monument a brass cap set atop a 2 x 36 iron pipe as set in 1926 by GLO

Corner References

6"	White Pine	N76 E	12 66 feet
4'	White Pine	S23 E	26 06 feet
6'	White Pine	N06 W	19 02 feet
12	Jack Pine	S20 W	25 95 feet
	Steel Sign Post	Northeast	1 0 feet

2 Section Corner to Sections 19 24 25 and 30, T39N R11-12E

Position found marked by a GLO monument a brass cap atop a 2 x 36 iron pipe as set in 1926 by GLO

Corner References

6	Jack Pine	N77 E	39 27 feet
10"	Jack Pine	S01 E	30 50 feet
8'	Jack Pine	S83 W	15 60 feet
4	Jack Pine	N25 W	59 73 feet
	Steel Sign Post	Northeast	1 7 feet

3 Section Corner to Sections 25 26 35 and 36 T39N R11E

Position found marked by a GLO monument a brass cap set in a 6 x 24 concrete cylinder in 1941 by GLO

Corner References

8	Hemlock	N59 E	22 11 feet
9	Hemlock	S60 1/4 E	18 48 feet
6	Hemlock	S35 W	46 20 feet
7	Hemlock	N54 1/4 W	17 49 feet
	Steel Sign Post	East	1 8 feet

86017

Stock No 26273

Sheet 3 of 4

4 Quarter Corner to Sections 24-25 T39N R11E

Position found marked by a GLO monument a brass cap set in a 6" x 24" concrete cylinder in 1941 by GLO

Corner References

12'	Red Pine	S73 E	117 14 feet
18"	Red Pine	S28 E	52 56 feet
14'	Red Pine	S15 W	132 64 feet
	Steel Sign Post	North	0 8 feet

5 Quarter Corner to Sections 25-26, T39N R11E

Position found marked by a GLO monument a brass cap atop a 2" x 36" iron pipe as set in 1926 by GLO

Corner References

22	Red Pine	N69 E	71 14 feet
18	Red Pine	S71 E	115 89 feet
10'	Red Pine	S30 W	25 84 feet
26	Red Pine (original)	N60 W	4 66 feet
	Steel Sign Post	Northeast	1 2 feet

6 Quarter Corner to Sections 25-36 T39N R11E

Position found marked by a GLO monument a brass cap set in a 6" x 24" concrete cylinder in 1941 by GLO

Corner References

18"	Yellow Birch	S36 W	28 00 feet
14"	Yellow Birch	N62 W	17 33 feet
12'	Hemlock	S56 E	43 79 feet
4"	Red Maple	N41 E	2 64 feet
	Steel Sign Post	South	1 0 feet

7 Quarter Corner to Sections 25-30 T39N R11-12E

Position found marked by a GLO monument a brass cap set in a 6" x 24" concrete cylinder in 1941 by GLO

Corner References

6	Black Spruce	N03 E	13 49 feet
8"	Tamarack	S05 E	28 37 feet
10	Tamarack	S79 E	55 17 feet
10"	Tamarack	S45 W	34 51 feet
	Steel Sign Post	Southwest	1 5 feet

CORNERS ESTABLISHED1 South Sixteenth Between Sections 25-26

Position established on line and midpoint between the East Quarter and Southwest Section Corner to Section 25

Corner References

12'	Hemlock	S03 W	41 80 feet
6	Cedar	S76 W	28 54 feet
	Steel Sign Post	South	1 5 feet
1	Steel Pipe Alongside		



Stock No 26273

Sheet 4 of 4

2 West Sixteenth Between Sections 25-36

Position established on line and midpoint between the South Quarter and Southwest Section Corner to Section 25

Corner References

12'	White Birch	S05 E	30 64 feet
16"	Red Maple	N61 W	22 27 feet
	Steel Sign Post	West	1 5 feet
1	Pipe Alongside		

3 Southwest Sixteenth to Section 25

Position established at the intersection of the West and South Sixteenth lines to Section 25

Corner References

18"	Red Pine	N54 E	86 50 feet
10	White Pine	N18 W	55 74 feet
	Steel Sign Post	West	1 0 feet

SURVEYORS AFFIDAVIT

I Milo E Stefan Land Surveyor registered in the State of Wisconsin hereby certify That I have surveyed and subdivided Section 25 T39N R11E Fourth Principal Meridian County of Oneida State of Wisconsin in accordance with the rules of the survey of public lands and with the statutes of the State of Wisconsin The plat map and survey notes are an accurate representation of the corners recovered and established

Date of Survey October 1988

Milo E Stefan
 Milo E Stefan
 Registered Land Surveyor
 State of Wisconsin
 Certificate #1558

Plat is ready for filing

Janet Stark
 District Ranger

12/6/88
 Date